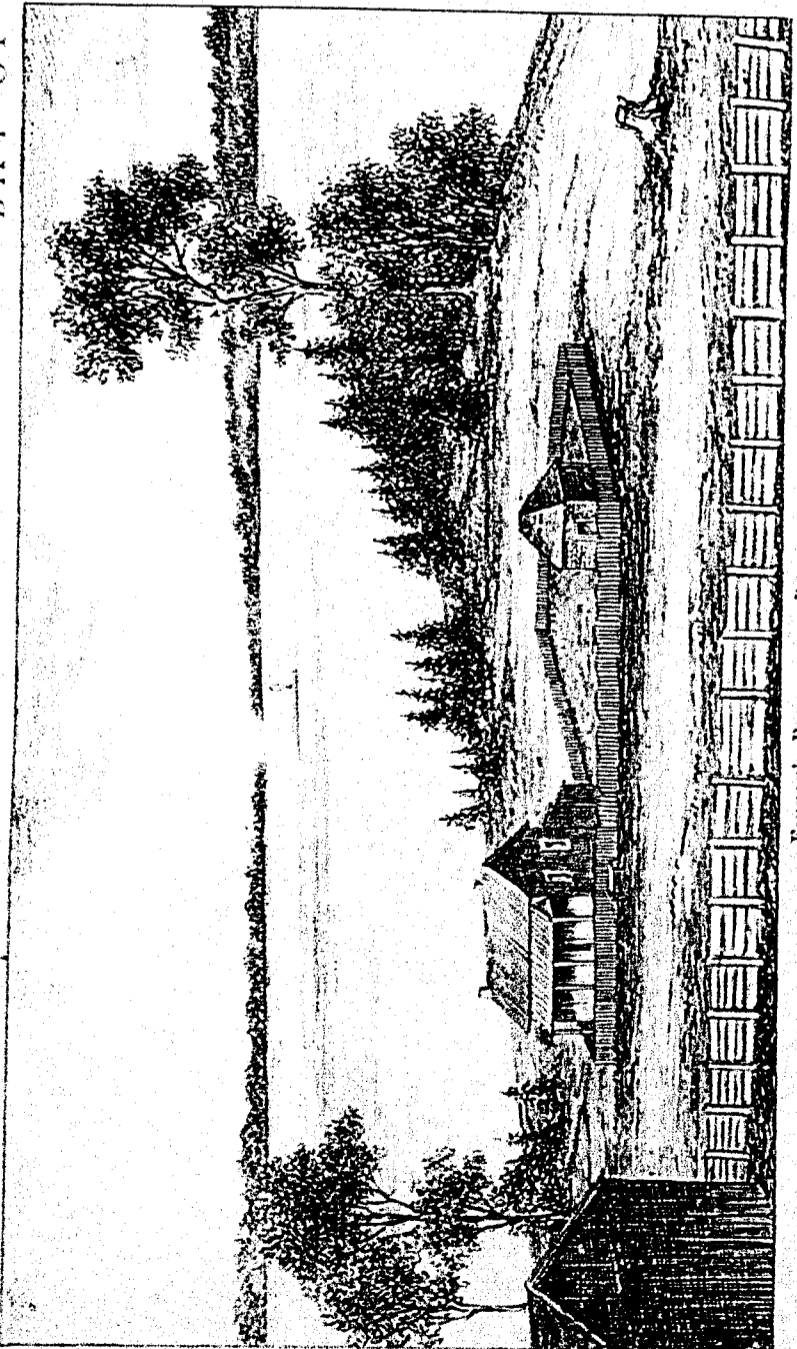
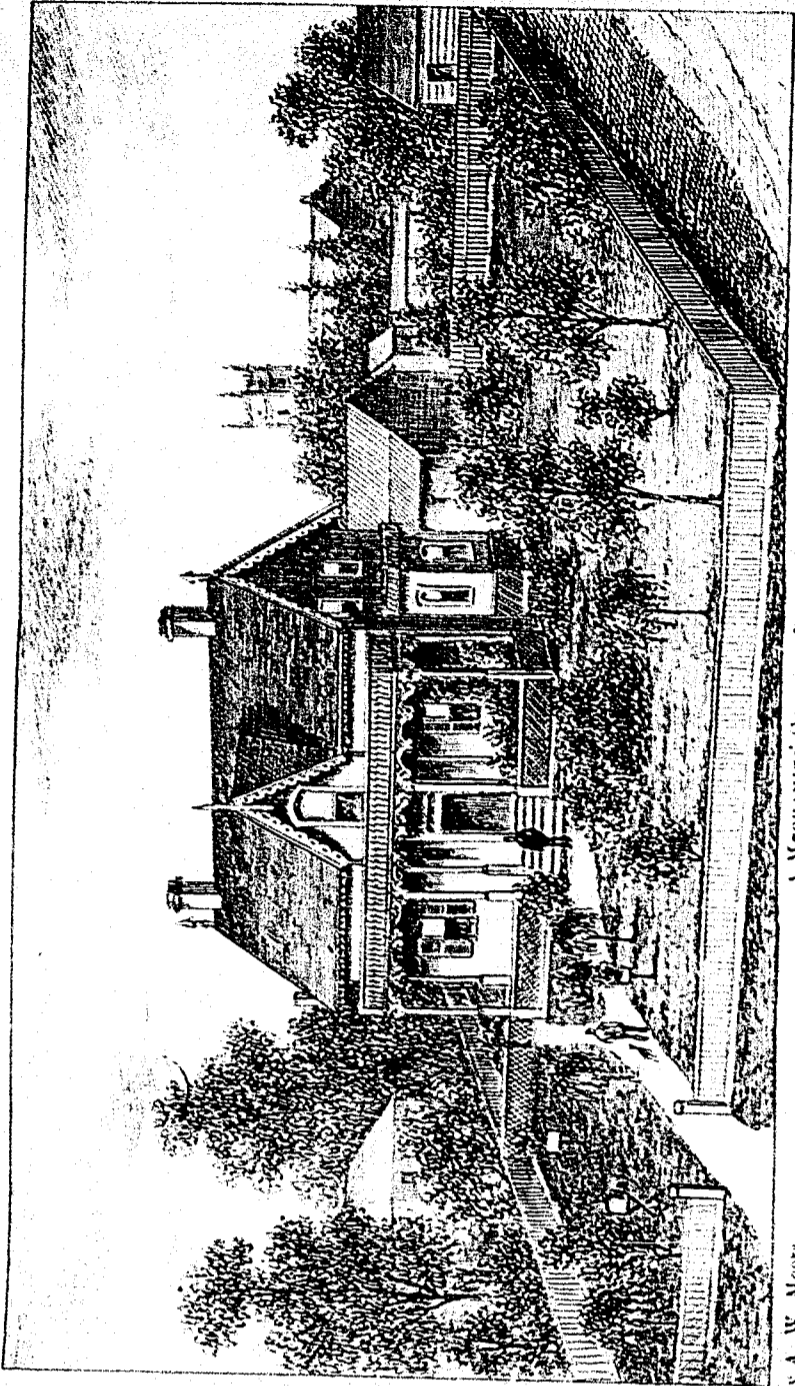


BAY OF QUINTE.



FINKLE'S POINT, NEAR BATH.



A MECHANIC'S COTTAGE, BATH, IN 1877.

From Sketches by A. W. Moore.



PARIS.—THE NEW SPACE IN FRONT OF NOTRE-DAME AFTER THE DEMOLITION OF THE HOVER PATH.