



No cheap paint is as good as Ramsay's Paints, nor is there a good paint so cheap.

Every can and every color has the same high quality.

Send us a post card, mentioning this paper and we'll send you a booklet showing how some beautiful homes are painted with our paints.

A. RAMSAY & SON, Paint makers, MONTREAL.
Estd. 1842.

Most People Want The Best of Everything. Why?



Take Cream Separators, for instance! Why are Magnet Separators used in preference to others? That they are is easily proven. Our factories are now making from 25 to 30 Magnets per day to supply a steadily-increasing demand. There must be some good reason for their universal adoption. There is: Every farmer wants a Cream Separator that is made very strong and simple. Magnet Separators also turn easy and are made with spur gearing, not worm.

Jas. W. Robertson,
Commissioner of Agriculture
and Dairying.

F. W. Hodson,
Live Stock Commissioner.

THE PATRIE MFG. CO., LTD., Guelph, Ont.:

Gentlemen,—I am pleased to inform you that the Magnet Cream Separator which I bought from you several months ago has been in continuous use in my dairy of forty cows. It has been very carefully and severely tested, and I am glad to inform you that it has given perfect satisfaction. It runs very lightly, skims well, and separates beyond the capacity guaranteed by you. I have no hesitation in saying that Canadian farmers would find it to their interests to buy machines made in Canada, rather than those imported from foreign countries and assembled in Canada. The reasons are obvious and need no explanation.

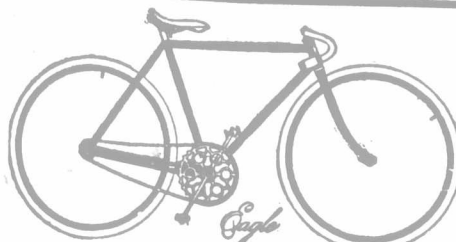
Yours very truly,

Dominion of Canada
Department of Agriculture.
Commissioner's Branch.

Ottawa, April 6th, 1903.

Magnet Cream Separators are money-makers. Made in Canada and sold on a positive guarantee. Write for a catalogue.

PETRIE MFG. CO., GUELPH, ONT.
LIMITED



\$30.00 Cut this ad. out and send to us with **\$1.00**
State whether you wish Men's or Ladies' Bicycle, height of frame and gear wanted, and we will send you this High Grade 1903 Model Eagle Bicycle by express C.O.D. subject to examination. You can examine it thoroughly at your Express Office and if found perfectly satisfactory, exactly as represented a GENUINE EAGLE BICYCLE, HIGH GRADE, 1903 MODEL—pay to the Express Agent the balance due—\$29.00—and Express Agent the balance due—\$29.00—and Express Agent the balance due—\$29.00.

Charges. The express charges are only 50 to 75 cents for each 500 miles. No extra charge for Ladies' Bicycles. EVERYONE KNOWS THE EAGLE BICYCLE. They are the Highest Grade wheels made; big joints, finest hanger, hubs and bearings, highest grade equipment. Fitted with Dunlop double Tube Tires. Heights of frame—Men's 20, 22 and 24 in.—Ladies' 20 and 22 in.—enamelled Black. WE OFFER splendid chance to a good agent in each town. Send for catalogue and ask for Agents' Discounts. Wheels slightly used, \$8.00 to \$25.00. Secure Agency at once.

T. W. BOYD & SON, 1683 Notre Dame St., MONTREAL

There are many Reasons why the Improved U.S. Cream Separator is the One to Buy

Below are a few of them:

THE U.S.

- Costs no more than inferior machines
- Gets more Cream out of the Milk
- Is less expensive to operate
- Increases the quantity
- Improves the quality
- Will wear longer
- Soon pays for itself
- Has its gears enclosed
- Bowl has few parts to wash
- Has simple self-emptying Bowl
- Has many other points of superiority more fully described in our catalogues which are free for the asking, all making

The U. S. Separator the Standard Separator of the World.

For Manitoba and the West we transfer our separators from Chicago and Minneapolis and for the Eastern Provinces from Quebec, Sherbrooke, Montreal, and Hamilton. Address all letters to Bellows Falls, Vt.

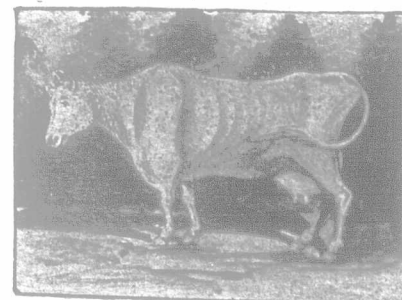
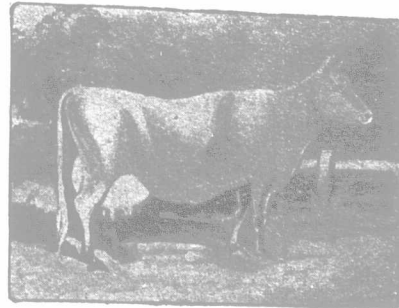
Vermont Farm Machine Co., Bellows Falls Vt.



"EUREKA" FLY KILLER.

"EUREKA" is death to flies, a comfort to stock, and a profit to the farmer who uses it.

It kills Texan horn flies, cattle lice, hog lice, and vermin.



AGENTS IN EVERY TOWN IN ONTARIO. SEND FOR TESTIMONIALS.

The Superintendent of the Provincial Government Farm at Truro, Nova Scotia, tested it beside all other known remedies, and EUREKA was proven superior. Read what this well-known English authority says:

THE J. H. AMES CO., BOWDOINHAM, MAINE:

GENTLEMEN,—This is to certify that I have used all the known remedies for prevention of flies, and consider EUREKA FLY KILLER superior to all others.

TRURO, N. S., Feb. 4, 1901.

F. L. FULLER,
Supt. Gov't Farm.

GENTLEMEN,—I found your Fly Killer and Sprayer to be all it was recommended to be. After I began using it my cows came out much in their milk. I have much pleasure in recommending it to those who have not yet used it.

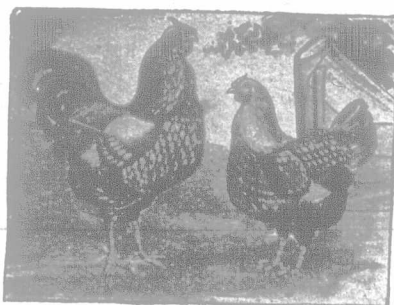
Yours truly,

ELMHURST, K. Co., N. B., March 2, 1901.

H. E. GANONG.

Can you question which is best after reading the above?

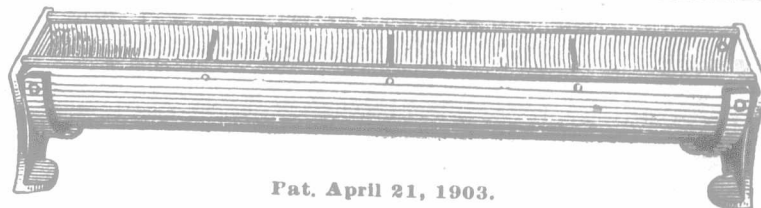
We sell all kinds of Sprayers. The best in Canada for Fly Killer is the "ELECTRIC."



The LAWTON SAW COMPANY, Ltd.,
MANUFACTURERS,
ST. JOHN, NEW BRUNSWICK.

Patent Steel Hog Troughs

SOMETHING NEW. SOMETHING LONG WANTED.



Pat. April 21, 1903.

WE are placing the above first-class troughs on the market, with absolute confidence that they will fill a long felt want in the feeding of hogs. After five years' experimenting, they have been perfected in every detail, and made to excel all others. The bodies of our troughs are made in a half circle, out of 14-gauge cold rolled steel boiler plate, especially imported from the Old Country for the purpose. This steel is so hard and close grained, the whey has practically no effect on it and will not eat it. The ends are of heavy cast iron, with flanges, to which the steel body is riveted. Cross bars of steel are placed every twelve inches and riveted through the sides. This is to strengthen the troughs, and to keep them from lying in the troughs. The top edges have a nice round finish, 3-8 wrought-iron pipe, being slotted with a special machine, driven on the edge and riveted there. These troughs are hog-proof, whey-proof, frost-proof, and practically indestructible. Their circular shape allows for expansion of ice, so they will not burst. Should they freeze up, they can be easily thawed out. Fire will not hurt them; you can boil water in them. There is an unlimited demand for these troughs, as every hog-raiser wants them, and will have them when he understands what they are. Farmers are making money out of them, one man selling 600 feet of these troughs to his neighbors in three months. Standard sizes kept in stock 3 ft., 4 ft., 5 ft., 6 ft., 7 ft., 8 ft., 9 ft., 10 ft., 12 ft. Special orders of any length from 3 to 20 feet made to suit customers. These troughs are fully warranted.

Westake our reputation on them. If your dealer does not keep them, write us direct. Write for fuller particulars, and prices.

Agents Wanted Everywhere.

WILBER GORDON, TWEED, ONT.