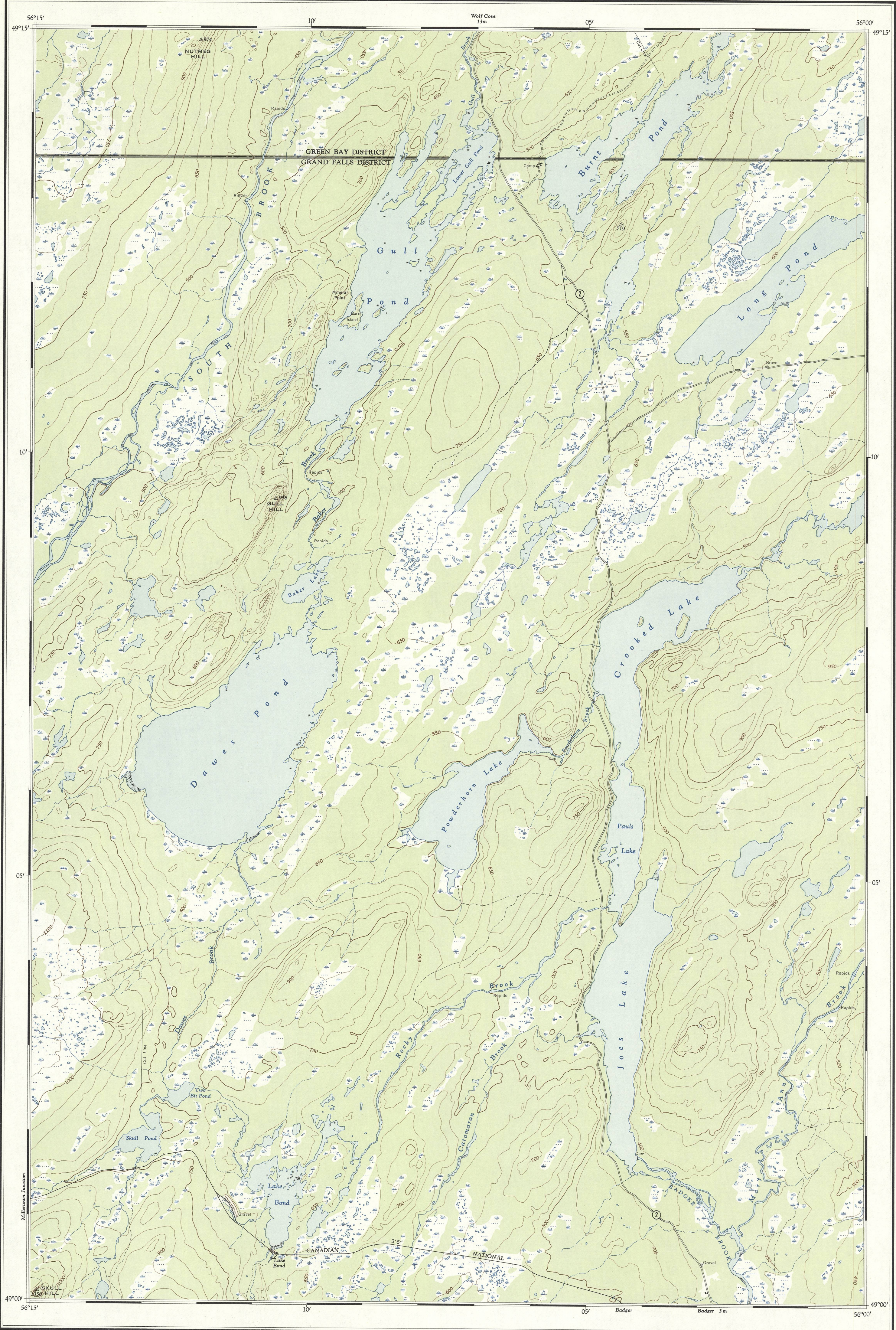


CANADA
MINES AND TECHNICAL SURVEYS
SURVEYS AND MAPPING BRANCH

NATIONAL TOPOGRAPHIC SERIES

1:50,000

FIRST EDITION CANADA SHEET 12 H/1 EAST HALF

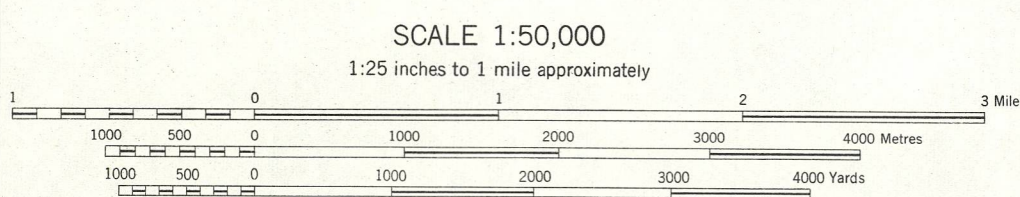


Produced and printed by the Surveys and Mapping Branch, Department of Mines and Technical Surveys, 1955, from air photographs taken in 1949.

GULL POND
NEWFOUNDLAND

MAGNETIC DECLINATION 23°25' WEST
AT CENTRE OF MAP 1955
Annual magnetic change 3' easterly

- REFERENCE
- Roads:
loose surface, all weather... less than 2 lanes
loose surface, dry weather...
winter, cart track... Winter road
trail or portage...
Railway: narrow gauge, single track... 3'6"
- Boundaries:
provincial (monument).....
county or district.....
Power transmission line.....
Telephone line.....
Horizontal control point.....
Buildings.....
School; Post Office.....
Church; Cemetery.....



CONTOUR INTERVAL 50 FEET
Elevations in Feet above Mean Sea Level
North American Datum 1927

Copies may be obtained from the Map Distribution Office, Department of Mines and Technical Surveys, Ottawa, at 25 cents each.

- REFERENCE
- Small ponds.....
Streams:
intermittent or dry.....
indefinite.....
Marsh or Swamp.....
Foreshore flats.....
Rocky reef.....
Rock bare or awash.....
Lighthouse.....
Ferry.....
Breakwater.....
Pier, dock or wharf.....
Cliff.....
Contours.....
Forest.....

49°30'	12H/7	12H/8	227D
	SHEFFIELD LAKE	SPRINGDALE	ROBERTS ARM
	12H/2	12H/1	2E/4
	THE TOPSAILS	GULL POND	HODGES HILL
	12A/15	12A/16	2D/13
	BUCHANS	BADGER	GRAND FALLS
48°45'			55°30'

INDEX TO ADJOINING SHEETS

GULL POND
12 H/1 EAST HALF

SUPERSEDED EDITION