

MANNISH SHOES FOR YOUR BOY



They Look Just Like Dad's
THAT'S what pleases the youngster—And they're built for wear—that's what pleases you.

We realize that there never was a Shoe sold that would stand so very long the kind of wear that your boy—the red-blooded, hard-playing sort of youngster, gives his shoes, but these shoes will last as long as any and longer than most.

Send the young man in. We guarantee to look after your interests and to give a fit that's proper and healthy for growing feet.

Mannish Types for Boys at Moderate Prices

Black Calf Lace, extra pump soles and uppers, reinforced at seams, special linings; also in Tan Lace.
Black and Tan Weather-proof Lace Shoes, waterproofed soles. Built for wear and winter weather.

Waterbury & Rising, Limited
"THE HOME OF RELIABLE FOOTWEAR"
61 KING ST. 212 UNION ST. 677 MAIN ST.

WANT BETTER CAR SERVICE

Citizens of Fairville Meet and Protest Strongly Against Present Conditions—To Take Action

A meeting of the citizens of Fairville, which took place last evening in the court room there, declared itself strongly on the matter of the service that is being given on the street railway in the Fairville section. There were more than fifty men present at the meeting. Amador W. Anderson was elected chairman of the meeting and H. Marshall Stout, secretary.

W. A. Nelson explained in detail the act of 1906. It states that adequate service must be provided for the people of Fairville and that when car service is not practicable, a conveyance must be provided by the company to connect with the line to West St. John. Other sections of the act were explained and Mr. Nelson contended that the street railway has in no way lived up to its obligations. He cited several persons in instances of long waits for cars, and told of some cases where passengers had to wait as long as thirty-five minutes for a car.

Councillor John O'Brien said that he and Councillor Golder had made representations to the company, requesting that the service be improved, and he read two letters from M. E. McCormack of the company respecting the situation. In the first letter Mr. McCormack stated some reasons why he did not ever a shuttle service through Fairville to connect with the West End cars; that he favored a service whereby fewer stops be made in through service cars. In the second letter he stated that a census had been taken for one week of the traffic of Fairville on the cars, and gave the number of passengers on the cars daily. The cost of operating was also stated and the writer contended that the Fairville service was not paying.

Mr. O'Brien said that at a subsequent meeting with Mr. McCormack the latter said that the schedule would be improved by having the cars make fewer stops, and that in order to do this the poles along Douglas avenue would have to be removed. The weather conditions had interfered with this work and so nothing had been done up to the present.

At this point in the meeting there were expressions of disapproval from all sides and several citizens repudiated what they believed to be a misrepresentation of the case in the matter of Fairville travel. They contended that every day a large percentage of the people walk down to the corner to take the West St. John car, rather than wait for the car going up Fairville and so no census taken by the company would be a correct estimate of the travel on the cars by the people of Fairville.

Rev. Thomas Marshall said that it was in his opinion that the sentiments of the meeting should be laid before the county members in the legislature and that they be asked to take up the cause of the people in this regard.

After further discussion, in which instances of hardship on account of long waits were related, it was moved that a committee of three from the meeting be appointed to serve with the Lunenburg highway board to impress on the New Brunswick Power Company, the sentiments of the public. The committee chosen is composed of W. J. Linton, S. T. Tippet and H. M. Stout. An amendment to this motion was afterwards carried to the effect that the committee mentioned, in conjunction with the Lunenburg highway board and the two county members, should appear before the New Brunswick Power Company to request that adequate service be given to the people of Fairville, and to state that the people have a right to expect it.

It was decided not to add any members to the committee appointed at the meeting in the Seamen's Institute recently to oppose the New Brunswick Power Company's bill at Fredericton.

It was moved by H. Marshall Stout that the meeting place itself on record as being thoroughly in sympathy with the resolution passed at the recent meeting in the Seamen's Institute under the auspices of the Board of Trade. The motion was seconded by W. J. Linton and carried unanimously.

NURSING SISTERS HONORED
Halifax Herald—At the Waegwoltie hospital, a presentation was made by the members of the nursing staff to Matron Nursing Sister Anderson, C. A. M. C., and Nursing Sister Bell, C. A. M. C., who were called to St. John. The presentation was made on behalf of the nurses by Matron Grace M. Grant, R. N. Both Sisters Bell and Anderson were greatly surprised and in responding, expressed their regrets at leaving Halifax.

DIED AT PERRY, MAINE
Solomon Lincoln passed away Sunday at his home at Birch Point, Perry, Me., having reached the advanced age of ninety-seven years. He was married three times, and raised a very large family. His first wife was Miss White of Perry; his second wife was Helen Knowlton, also of Perry, and his third wife, who survives him, was Mary Campbell of Nova Scotia. The children now living are two sons, Adelbert and Walter Lincoln of Perry, and four daughters, Mrs. John Mitchell of Eastport, Jean Gilson and Mrs. Ellory Gilson of Fannett, Mass., and Mrs. Robert Thompson of Penfield Centre, N. B.

Manchester Robertson Allison, Limited

Our Stores Open at 9 a.m. and Close at 6 o'clock Daily.

NEW SPRING MODELS
FOR MEN

Overcoats and Suits

Recent Arrivals That Should Prove of Utmost Interest to Men Who Appreciate Distinctiveness in Attire, and Realize the Importance of Being Fashionably Dressed

Every garment shown absolutely correct in every detail of style and tailoring.

We comprehensively dress men of all ages, and, as always, we continue to specialize on clothes for young men, though we have made unusual endeavor to provide models suitable for men of more mature years, or those inclined to dress in more conservative style.

To all we extend an invitation to inspect these new styles. You will not be asked to buy. Just see them and try them on.

MEN'S SUITS.....\$12.50 to \$34.50
MEN'S OVERCOATS.....\$13.00 to \$34.00

MEN'S CLOTHING DEPT.



White Embroideries
Lot 1.....5c. yard
Lot 2.....7½c. yard
Lot 3.....10c. yard
Lot 4.....15c. yard
Lot 5.....20c. yard
Wonderful Value in the Different Lots

Fancy Net Allovers
Cream and White
29c. yard

Dress Trimmings, Edges, Bandings, Silk Trimmings, Beaded Trimmings
10c. yard

Corset Cover Embroidery
18c, 32c, 35c. yd.

Maline Nets, Tulle Nets
Many Shades
30c. yard

Laces in Lots
2½c. and 5c. yard

Gold Laces
3 inch.....70c. yd.
6 inch.....\$1.20 yd.

The New Cloth
In Stripes, Quite Washable
35c. yard

Fancy Gingham, Stripes and Checks
14c. and 16c. yd.

SPECIAL SHOWING OF THE FAMOUS Chase Plush Robes

Unequaled for Motoring

They possess many of the best features of Real Fur Robes and in many ways are superior.

Comfortable, pliable, sanitary, free from odor, and fast colors. The standard pile of these Robes is made from specially selected, real animal hair insuring protection from weather, like the fur of animals.

Unlike other Robes, they do not shed, and the wear coming on the top ends of the animal hair, they give longer service. The pile is smooth and bright, so that all dust or dirt is removed by simply shaking the robe. Extra large sizes, single or double thickness, plain colors or fancy patterns.

\$6.75 to \$33.00

MEN'S FURNISHINGS DEPARTMENT

Manchester Robertson Allison, Limited

Several Strong Week-End Values Well Worth Looking Into

Remember the Items Quoted Below Are Only a Few of the Many Excellent Things We Have to Offer You On Saturday

STORE OPEN UNTIL TEN P. M. SATURDAY

NEW DOVE UNDERMUSLINS

"Something Different"

Dainty—Attractive—Serviceable

Envelope Chemise or Combinations, finest of flesh mulls, ribbon finish edge and hand embroidery trimmed, all sizes, flesh only.

\$1.75 per suit
Gowns, new wing sleeves in both Empire and round neck styles, sheer flesh mull hand embroidered trimming, all sizes, flesh only.

\$1.75 each
Bloomers or Knicker shaped to fit without any bulkiness around waist, finest of flesh mull, finished with elastic and ribbon edging at knee, all sizes.

\$1.48 pair

SATURDAY SPECIAL VALUES IN UNDERMUSLINS

Corset Covers line cambric and made with both round and square yokes of embroidery or lace with heading and ribbon tie, sizes 34 to 42 in. Value to 88c. and 40c.

Saturday, 35c. each

Panties, full flare and circular cut, good strong cambrics with deep embroidery ruffles or fine tucked lawn and lace edging, all sizes, value to 65c.

Saturday, 58c. pair

UNDERSKIRTS

A limited quantity of those extra special moreen underskirts, such as we sold on Dollar Day, black and colors, including Kelly Green.

CREPE KIMONAS

Full Length Kimonas of serpentine crepe in dainty shades, pink, sky, helio, rose, etc.

Saturday, \$2.00 each

SERGE DRESSES

Twelve only, wool Serge Dresses in junior, misses and women's sizes up to 68—all new, smart styles, colors green, brown, navy and black.

Saturday, only \$11.95

VOILE BLOUSES

White self stripe voile blouses with inch wide colored stripe, gingham band on collars and cuffs.

Saturday, \$1.00 each

STAMPED GOODS

Stamped Towels on fine linen huck, large size.

Saturday special 25c. each

Stamped cushion tops of corded reys in conventional and floral designs, colors, natural linen shades and green, size 18 by 28.

Saturday special 25c. each

PONGEE BLOUSES

New Style Pongee Blouses with Tuxedo collar, embroidered, green, attractive design.

Saturday, \$2.38 each

COLORED JAP SILK BLOUSES

Dainty shades in pretty style Jap blouses, made with square collar, finished picot edge and broad h. s. hem at front, cuffs finished hemstitching, colors, sky, flesh, maize and peach.

Saturday, \$2.98 each

YOU WILL SAVE ON THESE SATURDAY SPECIALS

Spring Costume Cloth in mixed greys, browns, and greens, 40 in. wide, regular \$1.15 and \$1.35.

Saturday Special, 89c. yard

Striped Voiles in blue, pink, and grey stripes, double width.

Saturday Special, 39c. yard

Checked Voiles in pretty shades of rose and grey only, double width.

Saturday Special, 35c. yard

Ends of Shirtings, 2 to 8 1/2 yard ends of Oxford Shirtings, light and dark stripes.

Saturday at specially reduced prices

SPRING GLOVES THAT WILL WEAR

Washable Chamollette Gloves, two dome fastenings, in black, grey, mastic and white, and white with black stitching.

Saturday special \$1.00 and \$1.15 pair

Just received a new line of Chamollette gloves in all white only, two dome fasteners, regular 85c.

Saturday special 68c. pair

LEATHER HAND BAGS

Leather hand bags in green and tan finish, fitted with coin purse and mirror, regular 95c.

Saturday special, 89c. each

Solid Leather Hand Bags in black only, with flowered satin lining, coin purse and mirror.

Saturday special \$1.59

HOSIERY FOR ALL AGES AND SIZES

Odd lines ladies' and children's lisle and cashmere hose, specially priced for Saturday to clear.

Boys' strong ribbed hosiery in double knee and plain ribbed leg, regular 85c.

Saturday special 25c. pair

HOUSEHOLD REQUIREMENTS AT MONEY-SAVING PRICES

Roller Towelling with red border, 2 1/4 yards for

39c.

Pillow slips, good strong circular cut, 40 and 42 in.

35c. each

Bath towels in large size, fringed ends.

45c. each

SMART DRESSES FOR HOUSE WEAR

Will Appeal to the Woman Who Wants to Look Her Best at All Times

Women's Wash Dresses, smart styles in "Dolly Varden" crepe, trimmed buttons and buttons, colors blue, rose, tan, helio, sizes 36 to 44 in.

\$1.98 each

Women's Dresses of "No-Iron" seersucker in dainty stripes, trimmed fancy crepe and buttons, colors sky and white, grey and white, sage and white, tan and white, sizes 36 to 44.

\$2.25 each

Women's "Billy Burke" dresses all in one piece, belted middie effects with lacing at neck, made with both round and star collars, solid colors and barber or candy stripes, blues, tans, rose, sage, navy, trimmed white, sizes 34 to 44.

\$2.95 to \$3.25 each

Women's apron dresses, they cover the dress completely or can be worn as a house dress, good and roomy with side closing, large pockets and wide belt, all neat stripe cambrics, combination trimming, medium, light and dark shades, all sizes.

\$1.33 each

SPRING STYLES IN SERGE

MIDDY SUITS FOR THE SCHOOL GIRLS

Girls School Middies of fine twill navy serge, black or white braid trimmed, sizes 6 to 12 years.

\$2.98 and \$3.25 each

Girls' Navy Serge Middy Skirts, made with deep side plaits, wide hem and attached underwaist, sizes 6 to 14 years.

\$2.98 to \$4.25 each

Daniel

London House

Head of King Street

TRY Drummond SCREENED Coal

The best Soft Coal substitute for Anthracite in a furnace. Let us explain to you how to use this coal. You can soon get the "hang" of it, and it's cheaper—\$10 a ton.

CONSUMER COAL COMPANY, LIMITED



Economy Begins at Home

Now-a-days Governments, Chancellors, bankers and business men talk economy. However, it is one thing to talk economy and another to put it into practice.

The Canadian Housewife

holds the key to the situation. Real economy may be practised by the housewife in food purchasing for the home. At very small cost she may obtain the finest cocoa that money can buy—a cocoa unexcelled as a food drink and unrivalled as a flavoring, that adds extra delight to hundreds of dainty desserts.

Write for COWAN'S Recipe Book on Desserts—mailed free.

COWAN'S COCOA
"Perfection Brand"

Make the Home Bright and Cheerful

PAINT YOUR HOUSE WITH

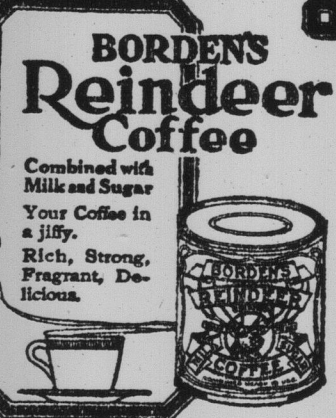
CROWN DIAMOND PAINT

Made by McArthur Irwin Limited—Paint makers since 1842.

See Me for Prices Before Buying

H. G. ENSLOW,

1 Brussels Street, (Cor. Union Street)



HORLICK'S

Malted Milk for Invalids

A nourishing and digestible diet. Contains rich milk and malted grain extract. A powder soluble in water.