

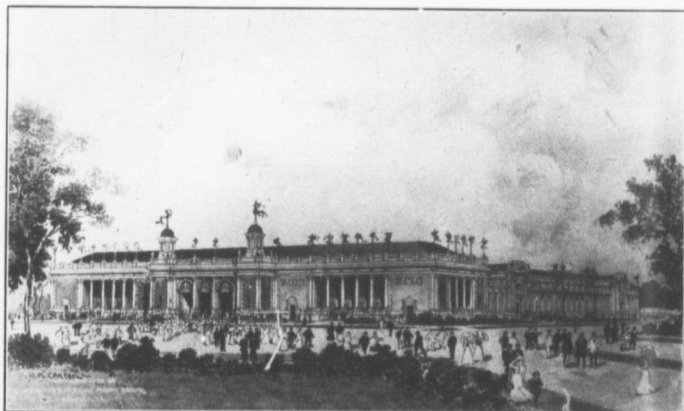


JAMESTOWN EXPOSITION.
Grand Trunk Railway System's Building.

and carnivals add to the splendor of the occasion. The great battle between the Merrimac and Monitor is reproduced in the same position these ironclads occupied when they had the terrible battle in 1862. This event occurred just off the point on which the Exposition is located.

As an industrial index, the Jamestown

Exposition plainly shows the progress that has been made during the past three centuries, not only in the United States, but in every nook and corner of the world where the footprint of progress has been left, in mine, factory, farm and garden. In its broad scope it sweeps the world, to gather here the most worthy works of mankind to be studied and compared in order that all inquiring minds may note the progress made. All states and countries, all cities and manufacturing centers, all professions and creeds, all arts and sciences, all callings and occupations, contribute to its success, and there are but few sections of the world that will not be represented at the Jamestown Exposition. The magnificent and commodious exhibit buildings include: Auditorium and Administration, History and Historic Art, Education and Social Economy, Manufactures and Liberal Arts, Machinery and Transportation, Pure Food Products, Mines and Metals, a States' Exhibit Palace, Arts and Crafts Village and many other special buildings and pavilions. The architecture of these buildings is of the Colonial pattern with



JAMESTOWN EXPOSITION—States' Exhibit Palace.