

APPLES

Representing

J. & H. GOODWIN

Manchester, Liverpool and Hull

THOS. RUSSELL

GLASGOW

Nothard & Lowe

LONDON

Will be pleased to keep you advised regarding the condition of the European Markets. If you any have Apples for Export, call or write:—

FRED. BARKER

25 Church St., Toronto, Can.

FLOWER POTS

Hanging Baskets, Ferns Pans, Etc.



We have a large stock of all sizes on hand, and can ship orders without delay.

Order Now Before the Rush

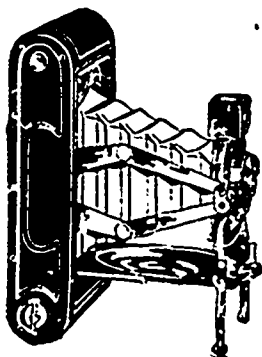
Our pots are smooth and well burnt. We have our reputation to keep up.

Send for Catalogue & Price List

The Foster Pottery Company, Ltd.

Main St., West

Hamilton



Photography with the bother left out.

Pictures 2 1/2 x 4 1/2 inches

Price \$12.00

**No. 1A Pocket
=KODAK=**

Slips easily in and out of an ordinary coat pocket. Snap, it is fully extended and in focus. Snap, the picture is made. Snap, and it's closed again.

Carefully tested meniscus achromatic lens, accurate shutter; daylight loading, of course. Made of aluminum, covered with fine real grain leather. Kodak quality in every detail. Loads for twelve exposures. Pictures 2 1/2 x 4 1/2 inches. Price \$12.00.

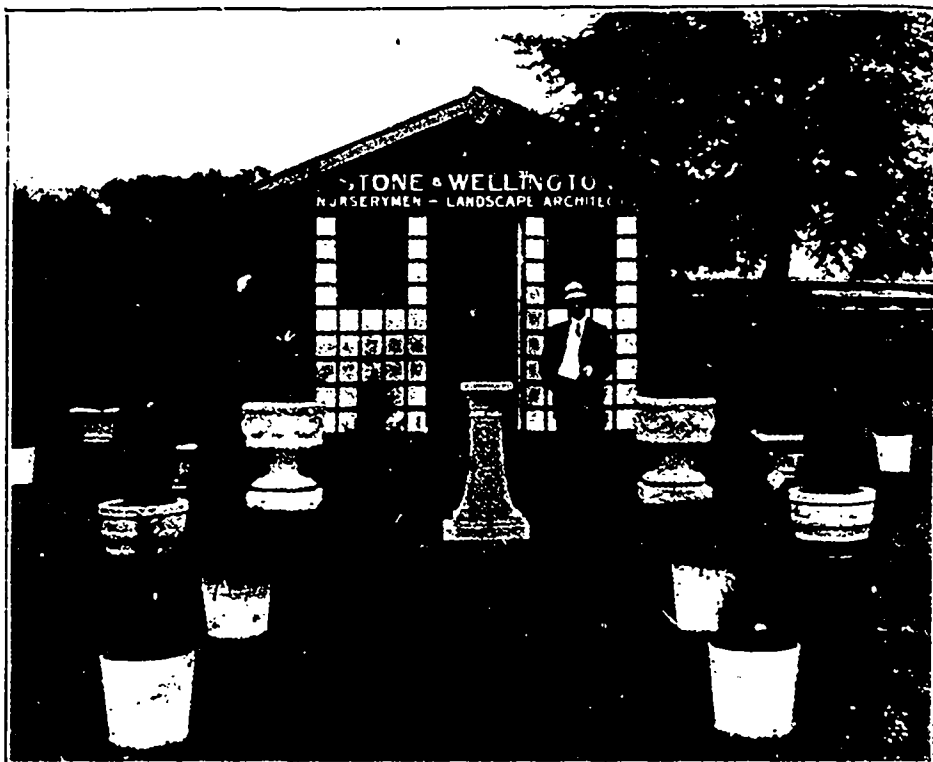
Other Kodaks \$5.00 to \$100.00. Brownie Cameras, they work like Kodak, \$2.00 to \$12.00. All are fully described in the Kodak catalogue free at your dealers or by mail.

**Canadian Kodak Co., Limited
TORONTO, CAN.**

A Unique Display of Nursery Stock

FEW of the many thousand visitors at the Canadian National Exhibition who passed down the main roadway towards the Machinery Hall failed to notice the attractive little building pictured on this page, which was set back a few yards from the walk and was surrounded by a beautiful stretch of green grass, and around which were arranged in an artistic manner, attractive specimens of fancy

est class of nursery stock. Their trees, grown under such favorable conditions, are straight, clean and well developed. These two year specimen trees shown stood from five to eight feet high, and a glance at their splendid root system and the remarkable growth that has been made during the past season shows that the trees were the kind which would establish themselves quickly when planted out in the orchard.



evergreens planted in tubs and art stone vases. This was the exhibition of Messrs. Stone & Wellington, the well-known nurserymen and landscape architects of Toronto.

The evergreen shrubs shown in the foreground made a collection of rare and choice varieties of cedars, particularly interesting to lovers of the beautiful, and which included a number of varieties of the Spruce, Arbor Vitae, Pine, Juniper and Fir.

The quaint little building in the background of a miniature formal garden made a unique and pleasing effect, which was enhanced by a well-set sun dial.

The building itself was used as an office, in which were shown illustrations of various shrubs, trees and roses, as well as a number of plans of private and public grounds, prepared by their landscape designer, who was in charge of this department, and who was able to answer many questions and enquiries in regard to the artistic and practical laying out of the home or public grounds.

Another feature of this interesting exhibit which attracted a great deal of attention from farmers and fruit growers were a number of bundles of their celebrated two-year-old standard grown fruit trees, consisting of apples, peaches, pears, plums and cherries. These trees were grown at their nurseries at Fonthill, and serve to show the splendid class of stock they are growing for their fall and spring trade.

Their nurseries are situated at Fonthill in Welland County, where conditions are ideal for the production of the very high-

and come into profitable bearing from one to three or four years ahead of stock which had not been grown under equally favorable conditions. Messrs. Stone & Wellington have for this fall and next spring an immense quantity of fruit trees such as those shown at the exhibition.

Those of our readers who, like our representative, stopped to look over this exhibit, no doubt learned much regarding the methods followed in producing high-class nursery stock, which well repaid them for the time spent. Those readers who are interested either in landscape architecture or in high-class fruit trees for the orchard, and who have an opportunity of calling at the head office of this firm at 49 Wellington St. East, Toronto, or of visiting their nursery at Fonthill, Ont., will be assured of a hearty welcome, and may count on learning much that will be of value to them. Those who may not have this opportunity may, by writing to the head office at Toronto, be placed in touch with the nearest Stone & Wellington representative, or will receive direct any information desired.

If these of us who are engaged in getting fruit in Ontario will rise to the dignity of the situation, and by every means in their power seek to put our product on the public market in such a manner as will remove every cause for complaint due to careless and indifferent packing and grading of what might otherwise be a high class produce, there is a bright future in store for the fruit growers of the premier province in the Dominion.