

MINES AND MINING.

Important Find on the Okanogan Free Gold Property.

EVENING STAR TO BE A SHIPPER

Work is to be commenced on the Great Hopes Property—The London & Canadian Will Soon Begin Operations—Other Mining Notes of Interest.

Superintendent Edgecombe telegraphed the directors of the Okanogan Free Gold Mines Thursday afternoon "that he had encountered 14 feet of ore very rich in tellurides on the west drift, and that assays would follow as soon as possible."

This strike is on the west side of the vein, from which assays of \$700 in gold were taken some time ago, and would indicate that a large body of high grade ore exists on both east and west sides of the vein.

The company have also received some photographs showing work of installing the stamp mill and other machinery to be in an advanced state.

Evening Star to Begin Shipping Ore.

The Evening Star management has decided to commence shipping ore to the smelter at once. The road from the mine to the track of the Columbia & Western railway is now being repaired. It is anticipated that this will be in good order by this evening, and tomorrow the shipping of the ore will be commenced. There is considerable ore on the dump at the mine, and this will be added to by that taken out in the course of development, and the Evening Star should have several hundred tons to its credit.

THE GREAT HOPES.

Work on the Property to Be Resumed After a Long Cessation.

The Great Hopes Gold Mining company, limited, a company which was incorporated four or five years ago under a State of Washington charter, and which is owned by Peter Larsen, the well-known railway contractor, Thomas Greenough of Helena, one of the proprietors of the famous Morning mine, and several friends of the above named parties, who live in Portland, Ore., and in New York city, have decided to resume work upon it. Operations will be commenced in a few weeks. The property is situated in the Deadwood camp, and is probably one of the first locations made there. It has been worked years ago as a free milling proposition. The ore was reduced in an arrastra, but as it became base with depth this method of reduction was abandoned and the property shut down to await the advent of transportation. As facilities for getting the ore to the smelter will soon be furnished by the Canadian Pacific railway it is thought that the present is an opportune time to resume operations. It has been decided to change the corporation from American to Canadian. The owners are all wealthy men and they do not doubt in a short time will place the Great Hopes on the list of shippers. Mr. Greenough will visit the Boundary Creek country next month, when he will lay out the work.

Will Soon Begin Work.

The London & Canadian syndicate intends starting work on its Boundary Creek property just as soon as Lionel W. Harris has visited them and decides upon a plan. A diamond drill outfit has already been shipped from this city and it will be used in prospecting the property.

Will Create a Market.

Messrs. Harris and Baker, the London stock brokers, who came here with Hon. Charles R. Mackintosh, intend visiting the various camps in the Kootenays and Yale before they return to England. They have a large and influential following, and as they are certain to take back with them a favorable impression of the good reports of the country will, doubtless, help to create a market there for the mining properties of this section and their shares.

Boundary Creek Copper Mines.

The prospects on Nicholson creek, between Greenwood and Midway, known as the Dominion and No. 2 claims, which have been owned by John Finch of Spokane, A. T. Kendrick of the Kendrick Mercantile company of Grand Forks and Northport, Harold Selous of Nelson, J. W. McCrea of Ottawa, and Hector McCrea of this city, have been incorporated under the title of the Boundary Creek Copper Mines, limited, with a capital stock of \$1,000,000. The surface showings on these properties are very extensive and have been opened up sufficiently to show that they have a large vein. A force of men will be put to work upon them early next month and then operations will be kept up continuously.

Resumed Work on the Nevada.

R. C. Pollett, the managing director of the American Eagle Gold Mining company, left on Wednesday for Ymir with a force of men to resume work on the company's property, the Nevada. This property has a splendid surface showing. The company has ample funds on hand to push the work of developing the property, and it is anticipated that there will, ere long, be a showing of ore made.

THE HUMMING BIRD.

The Development Is Uncovering Some Fine Bodies of Ore.

Mr. Morris J. O'Connor is in the city from Grand Forks. Mr. O'Connor is interested in the Humming Bird, B. C. properties there, which are being operated by the Humming Bird Gold Mines, limited. Since the last account eight months have been at work steadily and three drift tunnels have been run along the ledge. The longest tunnel is in for a distance of about 45 feet, the second is in 15 feet and the third the same distance. At the portal of the longest tunnel the vein was two and a half feet wide and in the breast of the tunnel it is now between four and five feet in width. The ledge is eight feet wide, and of this five feet is ore and the balance ledge matter. The ledge has been sampled and the lowest assay was \$19.05 per ton. A picked sample went \$95 in gold per ton. The ore carries about two and a half per cent of

copper. Work will be continued on the tunnels and the intention is to sink inclined shafts on the ore body and thus open up the mine. The management is greatly pleased with the outlook, as they feel assured that they have a mine. Mr. O'Connor is interested in the Humming Bird. He will remain in Rossland for the next 10 days. He is at the Allan.

THE WAR EAGLE.

Power From the Rossland-Red Mountain—Completion of Plant.

The first car down the new tram of the War Eagle from the head of the main shaft, came down on Monday, and there are two of the ore bins full now, but no ore has yet been shipped out from this point, as the big trestle over Centre Star gulch has settled a little, and the railway company is busy strengthening it in places. By tomorrow this will be finished and by Monday both the War Eagle and Centre Star are expected to ship out this full of ore ready for shipment. When fully completed the six ore bins will hold about 1,000 tons of ore. The contract to ship not less than 300,000 tons of ore within twenty-four months, made between the War Eagle company, the Centre Star owners, Messrs. Gooderham and Blackstock, and the Canadian Smelting company at Trail, commenced to run on the 1st of June last. The mines are behind the average daily shipment to date, but after the 18th inst., when it is expected that the standard gauge between the mines and the smelter will be completed, the average daily output can readily be made up.

The War Eagle company began to see both sides of the hoist yesterday for the first time. The new compressor plant is not yet in running order, but the company have made arrangements to use the Red Mountain seven-drill compressor for the present.

This plant has been used and is in running order, but for some time has not been in operation. The pipes connecting the Red Mountain compressor with the War Eagle system are being coupled on, and on Monday the power will be turned on. It is understood that the arrangement is only a temporary one pending the completion of the new compressor plant on the War Eagle, which is expected to be in full blast before the end of the month.

WILL PURCHASE A MILL.

J. J. Warren Tells of His Plans as to the Bunker Hill.

J. J. Warren of the White Bear Mining company, left Thursday for Toronto. Since he has been in the west during the past six weeks, and during this time he has accomplished considerable work. He caused the White Bear to be examined by an expert, who gave a favorable report. In connection with John Y. Cole he purchased the Bunker Hill property on the Pend d'Oreille river, and started work upon it. It is his intention to erect a 10-stamp mill upon the property as soon as the necessary arrangements can be made. There are 8,800 tons of ore in sight on the Bunker Hill. While Mr. Warren is in Toronto he will purchase the mill and it is expected that it will be in operation inside of the next three months. Mr. Warren will return from Toronto in a few weeks. If he can arrange his business affairs in a satisfactory manner he intends to leave Toronto and to take up his permanent residence here.

Ore From the Blizzard.

L. H. Keller, the well known barber, Thursday received some specimens from the Blizzard property. This property is located on the Colville Indian reservation, 12 miles from Northport. There is a small plant upon it and a steam drill. A tunnel has been driven to tap the vein, and this is now in for a distance of 60 feet. The foreman writes that the ledge has just been broken into, and sent some of the ore to Rossland. The ore carries gold, silver and copper. The ore from the ledge on the surface assays \$6.90 to the ton. Mr. Keller has not yet had the ore which he received, assayed, but it is certain that it will go higher than that which came from the surface.

The Gold Reef.

The Gold Reef Mining & Milling company, limited, of Rossland, owning the Rainy Day and Rainy Day No. 2 mineral claims on Wild Horse creek, near Ymir, is having the property surveyed by J. T. Anderson, P. L. S., or crown grants. The view of applying for crown grants, the company intends in a few days to have the claims thoroughly examined by W. H. Jeffery, M. E., the well-known California mining engineer, after which the treasury stock will be placed on the market. The readiness with which the pool of stock was taken up has enabled the company to defray all expenses, leaving a balance in the treasury. It is also intended to let a contract for work upon the Rainy Day, as the main lead on that claim gives an average of \$19 in gold per ton, and with depth it is expected that the mine will prove itself one of the most free milling properties in the Ymir camp.

Plans of the White Bear.

At the White Bear a gallows frame is being erected and skids are being put in from the top to the bottom of the shaft, which is now down to a depth of 250 feet. The intention is to begin the work of sinking to the 350-foot level at once, and should the conditions be favorable at that point the determination is to push on to the 450-foot level.

The Dewey Group.

A force of men have been started to work on the Dewey group on the north-west portion of Monte Cristo mountain. The group is owned by Hector McRae and other residents of this city.

Le Roi Shipments.

The ore shipments from the Le Roi mine for the week ending this evening will exceed last week's output considerably. Up to last evening 1,920 tons had been sent to Northport, and today's shipments will bring the weekly return well over the 2,000 ton mark.

Pleasant Juvenile Party.

A very pleasant party was given on Friday night by Mr. and Mrs. C. D. Given at their residence on St. Paul street, to their daughter, Ethel, who is now 11 years old. The guests were: Miriam and Harry Goodere, Irene and Harry Lockhart, Bert and Earl Wright, Flossy Donoghue, Eddy Keiff, Bert Ingram, Allie Braden, Patsy Jones and James Cameron. The house was turned over to the little ones, who thoroughly enjoyed themselves.

THE MINING REVIEW

The Camp's Outlook Was Never Nearer Brighter or Better.

ST. ELMO RESUMES OPERATIONS

The Evening Star Starts Shipping Tomorrow—A Ten-Drill Compressor for the St. Elmo—Shipments for the Week Total 3,683 Tons.

Another Red mountain, property of promise resumed work Monday. Last week details were given of the Cliff mine's expected resumption. Now the Consolidated St. Elmo joins the list. The property lies on the south slope, west of, and next above, the Cliff, and north of the Surprise and the Golden Queen, owned by the B. A. C. A good deal of development has been done on the two claims, but the property has been closed down for the past year. Tomorrow a force of men will be put to work and the management will at once install a 10-drill compressor plant. There are still some other Red mountain properties now lying idle whose owners should follow the example of the Cliff and St. Elmo. Not a single claim on the famous hill should remain closed down this summer. This season's opportunities are too good to be lost.

The Evening Star comes to the front again this morning with the first shipment to the railway has been finished and the mine management promise that shipments will commence tomorrow and be kept up continuously.

The big ledge in the 300-foot level of the Iron Horse has been crossed for 85 feet, and the footwall is not yet in sight. The ore is low grade, but it is confidently expected that shipping will be encountered with further development.

The Le Roi, War Eagle, Centre Star, Iron Mask, No. 1, Columbia-Kootenay, Josie, Nickel Plate, Deer Park, Big Three, Sunset No. 2, White Bear and Homestead were all working steadily during the week. Business generally is brisk and the outlook for the camp, as the week closes, has never been brighter.

The Ore Shipments.

The ore shipments from Rossland camp for the past week have fallen somewhat from the previous week. Still 3,683 tons were sent to the smelters. The Le Roi heads the list with 2,240 tons, as against 1,920 tons last week. The War Eagle sent 1,165 tons down to Trail, and the Centre Star sent 223 tons, while the Iron Mask's output was 55 tons. By this day week the standard gauge on the Columbia & Western between the mines on Red mountain and the smelter at Trail, will, it is expected, be fully laid and in running order. When this is accomplished and the new ore cars are in use, the shipments from the War Eagle and Centre Star will be considerably increased. During the summer these two mines should have a daily output of at least 350 tons.

The following are the shipments in detail for the week ending June 10 and the year to date:

Mine.	Week, Tons.	Year, Tons.
Le Roi	2,240	36,019
Iron Mask	1,165	17,661
Iron Mask	55	1,670
Evening Star	36	36
Deer Park	18	18
Centre Star	223	556
	3,683	55,300

St. Elmo.—E. L. Sawyer of E. L. Sawyer & Co. of Toronto, is in the city and has made the necessary arrangements for starting work on the St. Elmo, which is situated on the south slope of Red mountain, one and a quarter miles from Rossland. This property was formerly owned by the St. Elmo Mining company of Spokane and was incorporated in August 26th, 1895, with a capital stock of \$1,000,000 in \$1 shares. The chief spirits were E. L. Loring, E. D. Olmstead, F. E. Snodgrass and John Loring. The company soon after its organization commenced work on the property and did considerable development work, and among this was a tunnel 1,500 feet in length. Finally about a year since the work of development was abandoned, for the reason that the treasury was exhausted. A few months since the firm of E. L. Sawyer took hold of the property for the purpose of reorganizing the company and of interesting a number of eastern capitalists, principally in New York, and a new company has been formed with a capital stock of \$1,500,000. Among those who are interested are Thomas Duryea, the New York statesman, who is president of the New York Elmo Gold Mining company; Thomas H. O'Connor, a capitalist of New York, interested in the Standard Oil company; John K. Van Sickle, a member of the New York stock exchange; Thomas Walsley of Scott & Walsley, prominent insurance brokers of Toronto, and the firm of E. L. Sawyer & Co. of Toronto.

Sawyer says that the new company has ample capital and the determination is if there is anything in the St. Elmo to find it. Mr. Sawyer was busy yesterday among the machinery men and intends within the next 24 hours to purchase a 10-drill compressor plant. This will be sufficient machinery with which to start work. Henry Kumb, a graduate of the Columbia School of Mines, has been appointed superintendent of the St. Elmo and will start a force at work on the property tomorrow. Sunset No. 2.—The new hoisting plant on No. 3 vein has been installed and is working in a satisfactory manner. The work of deepening the shaft on the No. 3 vein is making good progress, and it will now be rapidly pushed to the 100-foot level. On No. 1 shaft the work of deepening it has progressed at the rate of three feet per day during the past week. It is now about 400 feet, and the ledge in the bottom is widening out and is now nine feet in width with perfect walls. Mr. R. J. Wilson of Toronto, president of the Canadian Gold Fields syndicate, and Alexander Priddy of Granville, Que., are en route for Rossland. After an inspection of the properties of the company here they will leave for East Kootenay, accompanied by J. C. Drewry, for the purpose of taking over the Lake Shore property, which was recently purchased for the Canadian Gold Fields syndicate.

War Eagle.—The big electric hoist of the War Eagle started both skips working towards the close of the past week. The ore has been hoisted out through the head of the shaft and sent down over the new tramway to the ore bins on the Centre Star level, where the C. & W. switch has been put in. No ore has yet been sent out from this point. The big trestle bridge across Centre Star gulch over which the ore must pass, having settled a little in places, the railway authorities

desire to strengthen it before starting in to use it regularly. It is expected that shipments will start from this point tomorrow. During the week the company concluded arrangements with the Rossland Red Mountain company, owning the claim of that name on Red mountain adjoining the War Eagle group, to use their seven-drill compressor plant. The connecting pipes between the two systems have been coupled on, and the plant will start up furnishing additional power tomorrow. It is understood that this is only a temporary arrangement, as it is thought that the War Eagle's compressor will be in running order by the end of the present month, if not before. The mine sent out 1,165 tons to the Trail smelter during the week. Work is proceeding on the 750-foot level.

Centre Star.—The six new ore bins at the Centre Star, having a capacity of about 1,000 tons, are nearly completed, and two of them are filled with ore ready for shipping whenever the Columbia & Western get ready to take it away. It is expected that during the coming week all the mine's output will go out this way. The 223 tons sent down to the smelter during the week came from the tunnel in the gulch. The men are still busy at the 300-foot station. Mr. Hastings expects to leave for East Kootenay today in connection with the deal for the control of the St. Eugene property, recently obtained by Messrs. Gooderham and Blackstock for \$375,000.

Evening Star.—Wilson Piper, the superintendent of the Evening Star, has been busy all the week getting the road between the Evening Star mine and the Columbia & Western railway track in order. Last evening he reported that it was in all condition to haul ore over. He received orders from the management of the company at Spokane to make all the arrangements for shipping. The consulting engineer, Roy H. Clark, has made the arrangements with the smelter management at Trail, and has received an advantageous freight and treatment rate. Mr. Piper reports that there is about 100 tons of ore on the dump and that the work of stoping will be at once inaugurated from the upper tunnel and the lower tunnel. He expects that moderate shipments can be kept up indefinitely, as there is a good sized ore chute available.

Deer Park.—Manager A. Lorne Becher was in from the Deer Park yesterday and reports that drifting is still in progress from the 350-foot level. The south drift on this level has now been driven for a distance of eight feet. There is from three to five feet of quartz in the face of this drift, which carries a fair quantity of copper. The breast of the north drift, which has been driven for a distance of nine feet, is looking well, and the expectation is that within the next 30 or 40 feet an ore chute will be found, for the reason that when this distance has been reached the drift will be under where the ore was found on the 100 and the 150-foot levels that went from \$11 to \$23 per ton. There are 17 men at work and the operations are making excellent progress.

Iron Horse.—The south crosscut has now cut the ledge for a distance of 95 feet and there is no sign of the foot wall. It now seems certain that this ledge is fully 100 feet in width. It is an ore body similar to that in the Centre Star. The ore in this particular portion of the Iron Horse is not of a shipping grade. It is thought, however, that by drifting upon it pay chutes will be found. In the Centre Star wide ore bodies with small values were encountered, and it took considerable exploration to locate the pay chutes. The east drift is in ore, and in the west drift is in mixed ore and country rock.

White Bear.—Early this week machine drills will be put to work in the shaft, which is now down to the 250-foot level, which is to be deepened to the 350-foot level. In addition to this, the intention is to drift along the vein on the 100-foot level. In short, the work is to be pushed all over the property. A favorable report has been made by an expert on the property, and his directions in relation to the development are being carried out.

Mabel.—The work of driving a crosscut for the winze is still in progress, about five feet being made in the past week. The work is very hard and two shifts were employed. The intention is to install a machine drill and to obtain the power from the Monte Christo. This is so that work may be pushed along faster.

Velvet.—The work of driving the crosscut on the 260-foot level continues. It is now in a distance of about 45 feet. The main tunnel is in a distance of 283 feet. Work continues to make good progress in all parts of the mine, and the showing is of a satisfactory character.

No. 1.—The strike in the No. 1, referred to in last week's review, continues to improve with further development. Mr. Carlyle is particularly well pleased with the way the showing continues to improve.

Iron Mask.—Superintendent Hall of the Iron Mask, is busy arranging for the increased plant for the property, the details of which have been given. The mine will shortly be in a position to ship out 50 tons per day.

Le Roi.—There is no special news from the Le Roi during the past week. Work on the Black Bear tunnel to tap the Giant shaft, the details of which have been given in this column, is progressing.

Big Four Group.—Everything has been prepared ready for work on the Big Four group as soon as the company now forming is completed, and other parties in the same neighborhood are getting ready.

Gertrude.—The men are still busy timbering the shaft down to the 200-foot level on the Gertrude. When this is completed drifting will be commenced.

Coxey.—Work is being continued on the upper tunnel in the Coxey. Superintendent Baker had no special news of interest to report during the past week.

Mascot.—Work continues on tunnel No. 1 and tunnel No. 2, and also on the winze. There were no new developments during the past week.

Satisfactorily.—The big mine sent down 2,240 tons of ore to the Northport smelter during the week.

Mabel.—Work has been continued all week on the Mabel. Development is confined to crosscutting at the end of the lower tunnel, which is in 260 feet.

Junco.—The crosscut tunnel has been driven for a distance of 263 feet.

Snowshoe.—Work continues on the crosscut from the main tunnel.

Mr. F. D. McLennan of Vancouver, is visiting Kootenays. He has just recovered from an attack of pneumonia and has gone up to the ore belt to recuperate.

WHITE HOUSE ROBBED.

Midnight Burglars Enter the Store and Secure Over \$100.

On Thursday night at 12:30 a. m. during the fire, burglars entered the White House store by a window in the rear, which they removed for the purpose. They succeeded in securing over \$100 in cash which the cashier left in the till. It has been her custom to place all monies in the

safe before going home. Strange to say this was the first time in the history of the firm that this duty has been overlooked, and the result is the above loss. The thieves were not satisfied with the loss, the till, but started to molest the safe, which had not been locked. They broke two drawers and must have left hurriedly, as Mr. Anderson, a clerk who sleeps in the store, returned at 12:45, and thinks they made their escape on his arrival.

Free Medical Treatment On Trial and Approval.

NO MONEY IN ADVANCE.



"Go to the fountain head" for a scientific method of marvelous power to vitalize, develop, restore and sustain.

Any man writing in good faith may obtain full account of this astonishing system. You have only to write your name and address on the blank form below, cut out the coupon and mail it to the Erie Medical Co., Buffalo, N. Y.

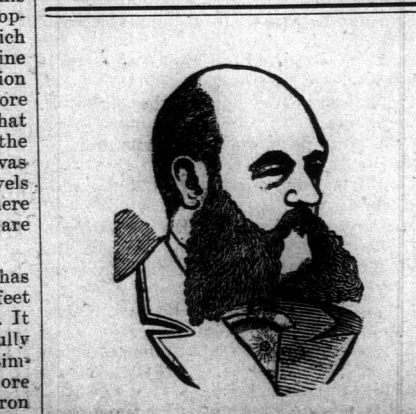
We pay Canadian duty. No delay, no exposure.

ERIE MEDICAL CO., 66 NIAGARA ST., BUFFALO, N. Y.

Sirs—As per statement in The Rossland Miner you may mail to me, under plain letter seal, postage paid, full explanation of your new system of furnishing your Appliance and Remedies to reliable men on trial and approval without expense—no payment to be made in advance—no cost of any kind unless treatment proves successful and entirely satisfactory. Also mail sealed, free, your new medical book for me.

Give name and address in full. Please write very plainly.

AGE MARRIED OR SINGLE



DR. REEVES

Spokane's Leading and Most Successful Specialist Why? Because

His reputation has been established by effecting CURES OF CHRONIC DISEASES IN MEN AND WOMEN where other physicians acknowledged inability failed.

ARE YOU Subject to fainting spells, dizziness, noises in the head, palpitation of the heart, flashes, numbness of the hands or feet, or any other symptoms indicating a diseased heart or paralysis of the brain?

ARE YOU Nervous and run down with thin blood, pale lips, dragging pains about the joints, loss of your natural cheerfulness, and with melancholy thoughts and inclinations to get up and run away?

ARE YOU Constipated and despondent, tongue, bad breath, pimples on your face and back, and with a dull languid feeling in every part of your body?

ARE YOU Troubled with a bad cold now and then breaks out on different parts of your body and makes your life a perfect hell?

ARE YOU Troubled with pain in the back, weakness of your kidneys?

ARE YOU Losing your memory and do you toss around in bed and get up tired and despondent and unrefreshed?

ARE YOU Afflicted with any disease of the kidneys? Brings an untimely death. It is an unmistakable sign of diseased kidneys. To neglect these troubles means to you diabetes or Bright's disease and a premature grave.

Chronic Diseases

Of whatever nature treated with unfailing success.

RUPTURE

New method, sure cure, painless treatment, no detention from work.

KIDNEYS

"Doctor Reeves' treatment helped me from the first. My sense of taste and smell has returned. I have no headache, and my kidney trouble is cured."

LIVER

"I had liver trouble. Every two weeks I would have a spell of vomiting that would confine me to my bed for three or four days at a time. I was nervous, easily discouraged, gloomy and irritable. I went to Doctor Reeves August 15th last. I have not had a sick headache or a vomiting spell since that time."

ASTHMA

"Dr. Reeves' treatment was a revelation to me. Each inhalation of the life-giving medicine brought comfort and ease. Now I am able to sleep in bed like a Christian, a sweet, refreshing sleep, like that of an infant. I work all day in the mill and experience no discomfort. With the exception of a slight cough, I AM A CURED MAN. My trouble was asthma."

Remember, Dr. Powell Reeves is the oldest specialist on this coast, and has thousands of testimonials showing his success in Spokane. Ask your banker, ask the express company, ask your neighbor. Everybody knows Dr. Powell Reeves, the old RELIABLE doctor. You can depend on him when all others fail.

PERMANENTLY LOCATED

No. 106 POST STREET SPOKANE, WASHINGTON

THE EN

What Speci

RARE MOT

The Cares and

scription of

Night Flics

Bouts—An

With its st

hardly enough

to call season

would doubt

and dales sur

eral city con

to the entom

eign parts, or

for the expres

termination o

scaling the m

tains to their

specimens for

and that pers

who for one

doubt. But

about the joy

butterflies an

has seen chil

winged creat

or more pier

and sticking

the house. O

the magic wa

further, and

dealer, begin

be a veritabl

dries his butt

may be) and

tive. He is a

which deserv

ent and con

scientific colle

great differ

It will thou