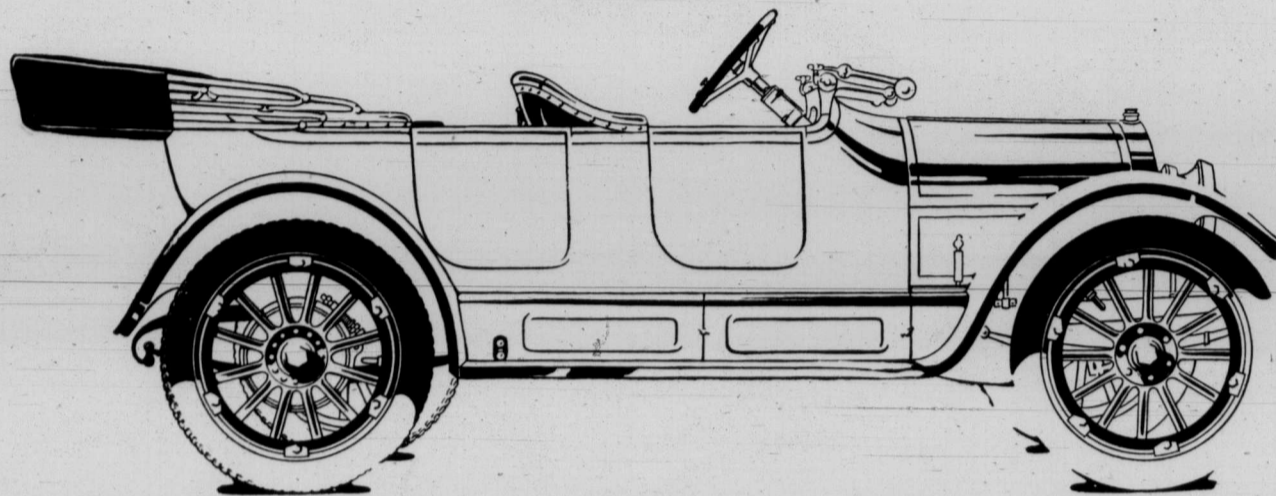


Overland
TRADE MARK REG.

\$1050

Roadster \$1015

Model 83, f.o.b. Toronto, Ont.



**Mature Popular Judgment
Says This is the Car to Buy**

This model was announced early last June.

In a few weeks we had built, sold and delivered more of these cars than had ever before been built of any car of over 100 inch wheelbase, by any producer anywhere in any length of time.

At that time we were building about 300 cars a day.

With more of these cars in every-day service in the hands of owners than of any other car of its size ever produced—

There was, very quickly, everywhere, the greatest opportunity ever offered for people to judge a car by its performance.

Now we are building over 600 cars per day.

This unprecedented demand follows the performance test in every-day service, not

of a few thousand cars, but of a *record output*.

In the mature judgment of the buying public you get more for your money in this car than you can get in any other car now on the market.

Never before has the purchaser of an automobile had so well founded, clear and conclusive a popular judgment as this to guide him in right selection.

The Overland dealer will show you the car and demonstrate it.

The five passenger touring car is \$1050; the roadster \$1015; the famous Overland Six—seven passenger touring car \$1600—the new Model 75 is \$850 for the touring car; \$825 for the roadster, all prices f. o. b. Toronto.

Catalogs on request. Please address Department 620

Willys-Overland Limited

Toronto, Ont.