

## MUNICIPAL ENGINEERS, CONTRACTORS AND MATERIALS

**WILLIS CHIPMAN**

Hon. Grad. McGill University.  
M. Can. Soc. C.E. M. Am. Soc. C.E.  
Mem. Am. W.W. Ass'n.

**WATERWORKS, SEWERAGE WORKS, GAS  
WORKS, ELECTRIC LIGHT AND  
POWER PLANTS**  
Reports, Surveys, Construction, Valuations  
**103 BAY STREET - TORONTO**

**R. E. SPEAKMAN, C.E.**

A. M. Inst. C. E., 1878.

**CONSULTING ENGINEER**

Waterworks, Sewerage and Sewage Disposal.  
Municipal Improvements.  
Gravelly Pavements.  
Electric Light Plants.  
Drainage and Irrigation of Land.  
Coal Handling Plant and Machinery.  
Plans, Specifications and Estimates.  
Construction and Valuations.

Canada Life Building - TORONTO

**Roderick J. Parke**

Am. Can. Soc. C.E., A.M. Amer. Inst. E.E.

**CONSULTING ENGINEER**

Hydraulic Power Development. Long Distance  
Power Transmission. Steam Plants, Electric  
Lighting and Power Systems. Tests.  
Valuations. Reports.

51-53 James Building, Cor.  
King and Yonge Streets, **TORONTO, CANADA**

Telephones: Office—Long Distance Main 3047  
Residence—Long Distance North 2204  
Telegraphic address: "Rodparke."  
W. U. Code, Univ. Edition.

**WILLIAM H. BREITHAUP, C.E.**

M. AM. SOC. C.E., M. CAN. SOC. C.E.

**CONSULTING STRUCTURAL ENGINEER**

Foundations, Bridges, Buildings.  
**BERLIN, ONT.**

**CEMENT TESTING****Dr. J. T. Donald**

Official Analyst to the Dominion Government.  
Established 1880.

Physical and Chemical Tests on all kinds of  
CEMENTS and RAW MATERIALS. Prompt  
returns and lowest rates consistent with accurate  
work.

112 St. Francois Xavier Street, Montreal, Canada

**ROSS & HOLGATE**

Consulting and

Supervising Engineers

Waterworks, Electric Light and Power  
Plants, Structural Work, Reports,  
Estimates, Arbitrations.

80 ST. FRANCOIS XAVIER ST. - MONTREAL

**RAILS** For Contractors, Switches, Gir-  
ders, &c.  
**LOCOMOTIVES AND CARS** New and Second Hand

**John J. Gartshore**

83 Front St. West,

Opposite Queen's Hotel. **TORONTO.**

**FIREMEN'S LADDERS**

—AND—

**LADDER TRUCKS**

We make the lightest, quickest,  
strongest and cheapest. Every Town  
and Village needs them and can afford  
them. They will save 50 times their  
price in insurance premiums. Write  
for circulars and quotations.

**THE WAGGONER LADDER CO., Limited**  
LONDON - - - ONT.

**John H. Jackson**

CIVIL ENGINEER

**WATER POWER, ELECTRIC RAIL-  
WAYS, STRUCTURAL STEEL.**

**Niagara Falls, Canada**

Associated with Charles H. Mitchell,  
C. E., Hydraulic Engineer.

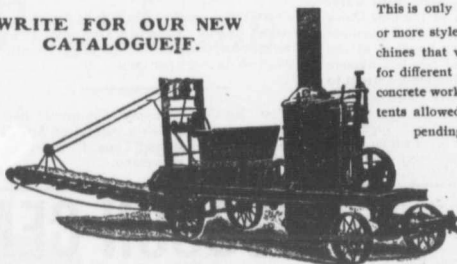
**CHARLES BRANDEIS**

Consulting Electrical and Mechanical  
Engineer.

Elect. & Lighting, Power and Railway  
Plants.  
Liverpool London and Globe Building,  
MONTREAL.  
Long Distance Telephone Main 3256

**The Greatest Concrete Mixer Yet Made**

**WRITE FOR OUR NEW  
CATALOGUE.**



This is only one of 30  
or more styles of ma-  
chines that we make  
for different kinds of  
concrete work. 10 pa-  
tents allowed, others  
pending

**NUMBER OF  
PATENTS**

35,664  
672,934  
675,035  
675,036  
675,037  
698,182  
698,910  
699,667  
699,668  
701,312

Also  
Mortar and  
Asphalt Mixers

**DRAKE'S STANDARD MACHINE WORKS**

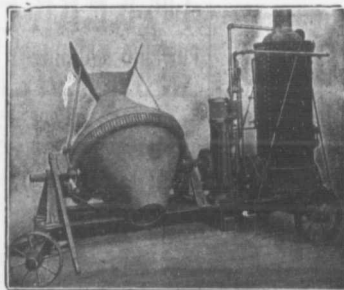
Factory,  
7-9-11-13 Garden Street, Chicago.

Office and Salesroom, 228-300-302 W. Jackson Boul.  
**CHICAGO, ILL., U. S. A.**

**SMITH  
CONICAL  
CONCRETE  
MIXER**

**18**

Different  
Sizes and  
Styles.



Mixes in Batches. Discharges by Tilting while  
Running. Mounted on Skids or Trucks.

Catalogue on Application.

— SOLE CANADIAN AGENTS —

**W. H. C. Mussen & Co., 763 Craig St.,  
MONTREAL**

**CANADIAN  
CONTRACTOR'S  
HAND-BOOK**

and  
Estimator

Third Edition

Price \$1.50; to  
subscribers of  
the Canadian  
Architect and  
Builder, \$1.00.

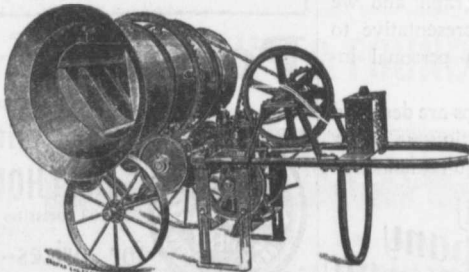
SEND FOR A COPY

C. H. Mortimer  
Publishing Co.  
Toronto.

Please mention THE CONTRACT RECORD when corresponding with advertisers.

**THE McKELVEY CONCRETE MIXERS**

MANUFACTURED BY **W. A. McKELVEY,** McInniss Building,  
TORONTO.



These machines  
are made to mix  
either continu-  
ously or in  
batches, and can  
be operated  
either by Hand,  
Steam or Gas-  
oline Power.