

TOPOGRAPHY

Section 9

Section 8

Section 7

Section 6

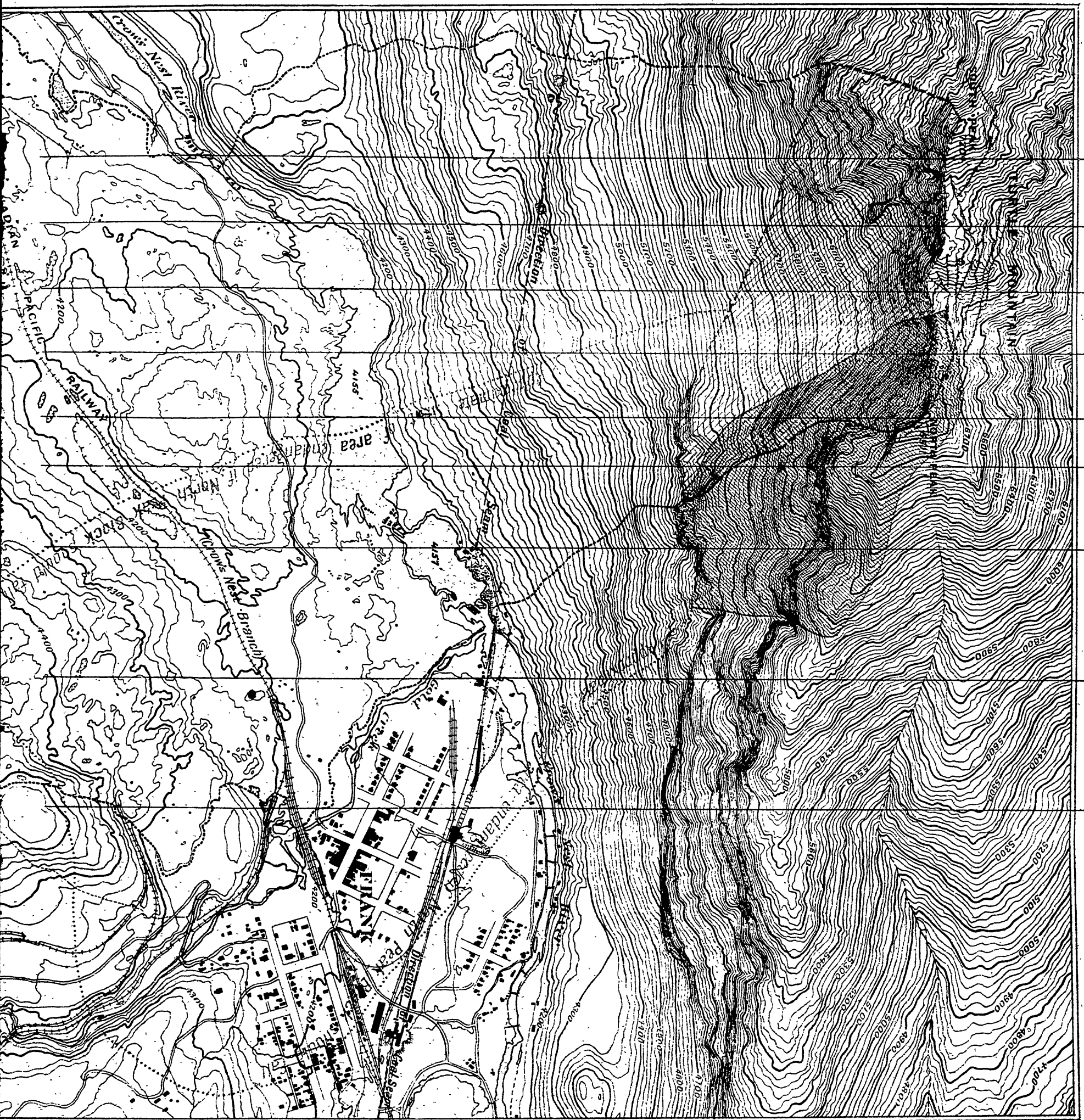
Section 5

Section 4

Section 3

Section 2

Section 1

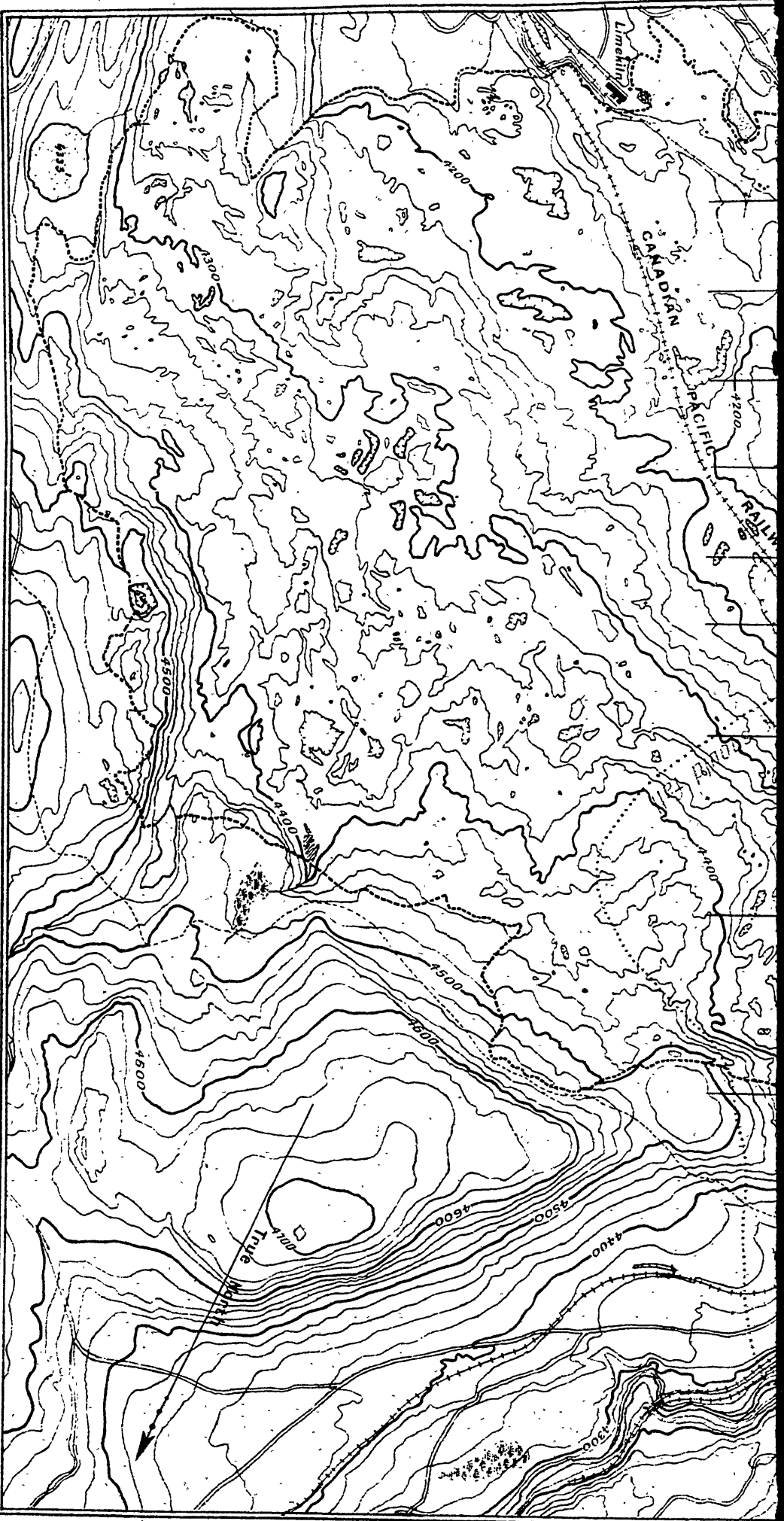


LEGEND

Area of rock now in danger of sliding (North Peak black)

Area of rock which fell April 29, 1903

- LEGEND
- Roads and buildings
 - Trails
 - Railways
 - Mine tramways
 - Shaft houses
 - Bridges
 - Mine tunnels
 - Mine dumps
 - Depression contours
 - Contours (showing land forms and elevations interval 20 feet)
 - Main fissures in mountain

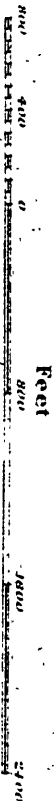


- Mine dumps
- Main fissures in mountain
- Edge of slide

TURTLE MOUNTAIN AND VICINITY
ALBERTA
 (SHOWING DANGER AREA)

To accompany Report of the Commission appointed to investigate the condition of Turtle Mountain, 1911

Scale, 800 feet to 1 inch



Topography by Geological Survey
 W. H. Boyd (in charge)