

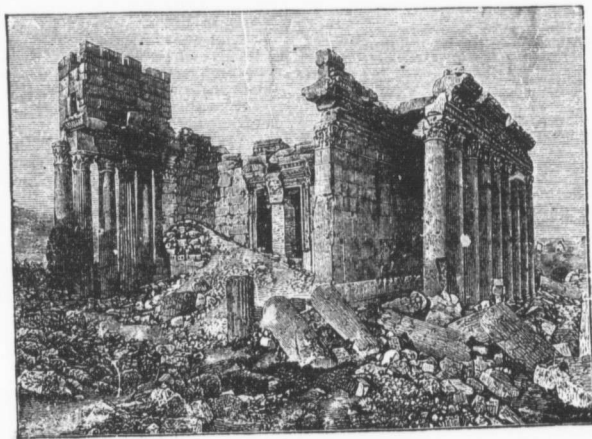
SUNDAY SCHOOL BARRER

for
TEACHERS
AND
YOUNG PEOPLE.

VOL. XXVI.]

AUGUST, 1892.

[No. 8.



TEMPLE OF JUPITER, BAALBEC.

Temple of Jupiter, Baalbec.

BY THE REV. GEO. J. BOND, B.A.

THE Temple of Jupiter at Baalbec, is the finest and most perfect and elaborate in Syria, and larger than the Pantheon at Athens. It was of the same general style as the Great Temple—a cella and peristyle—and its dimensions are two hundred and twenty-seven feet by one hundred and fifteen. In the peristyle, were originally forty-two columns, fifteen on each side, and eight at each end, and these columns were sixty-five feet high including base and capital, six feet three inches in diameter at the base and five feet eight inches at the top.

The cella of this superb building is still entire, but most of the columns have fallen. Enough remains entire and *in situ*, however, to give a very vivid idea of its original beauty. The wealth of delicate sculpture in the ceiling which connected the peristyle with the cella, particularly in the capitals, and the elaborate ornamentation of the magnificent portal, is perfectly amazing. This portal is twenty-one feet wide and forty-two feet high, and the jambs, which are monoliths, are sculptured most delicately with a band four feet wide, representing fruit, flowers, and vine leaves. The lintel is in three parts, and the massive key-stone, during an earthquake in the last century, slipped from its position, and is now upheld by a pile of rough masonry.