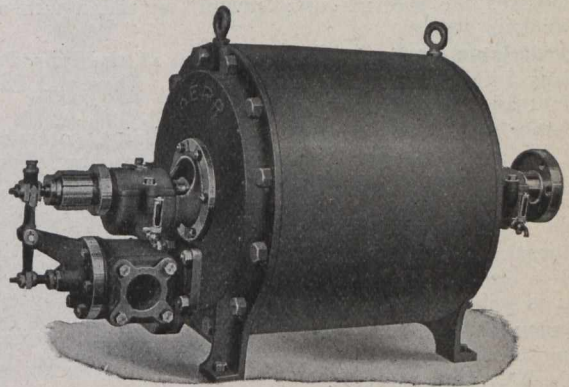


Kerr Turbo-Generators

FOR SMALL LIGHTING PLANTS

The Kerr Turbine is peculiarly suited to generator driving and our sets are made in suitable sizes to fill all requirements up to 500 kw. alternating and 350 kw. direct current. The operation is economical throughout a wide range of initial steam pressures, the steam economy is improved by superheat, and any exhaust conditions are permissible. When operating non-condensing, the steam consumption compares favorably with that of a high speed engine of the same capacity, while in condensing plants the economy at full loads equals that of the best compound engine and at fractional loads is much better.

A Kerr Turbo-Generator for lighting or small power or both is extremely profitable in any plant having power boilers, since the freedom of the turbine exhaust from oil makes reuse of the exhaust inexpensive and safe for boiler feeding or any other purpose where clean low pressure steam is desirable. See Bulletin No. 22.

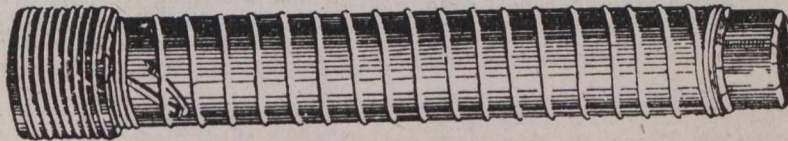


KERR STEAM TURBINE

Works, 512 WILLIAM ST., MONTREAL

**THE JOHN McDOUGALL
CALEDONIAN IRON WORKS CO.
LIMITED**

WOODEN WATER PIPE



Galvanized Wire Machine Banded Wood Stave Pipe
Continuous Stave Pipe

RESERVOIR TANKS

For City and Town Water Systems, Fire Protection, Power Plants,
Hydraulic Mining, Irrigation, etc.

MANUFACTURED BY

**PACIFIC COAST PIPE CO.
LIMITED**

Factory : 1551 Granville Street, VANCOUVER, B.C.

P.O. Box 563.

Full Particulars and Estimates Furnished.