

# Better Furniture Means Better, Happier Homes

## THOMAS BOARD TO SAVE WINDOWS OF CITY SCHOOLS

Decide To Use Wire Netting Guards Near Play-grounds.

## REPAIR COLLEGIATE

Principal Voeden Complains of Ventilation In G. W. V. A. Building.

Special to The Advertiser.  
St. Thomas, April 14.—Heavy wire netting is to be placed over the windows of the public schools which face on the play-grounds, so that the youth of the city may enjoy the baseball season without fear of breaking any glass.

On account of the number of broken windows the building and grounds committee of the Board of Education decided upon this course of action, at its meeting tonight. Secretary Newton, reported two complaints from residents near schools. Mrs. Williams, who lives next to the Myrtle Street School, presented a bill for \$2.00 to cover the cost of glass for a window and stated that it was not the first time windows in her home had been broken. Mrs. Oxford, 73 Curtis street, also complained of the boys playing ball, as they jumped into her yard, doing damage to her garden. Upon the motion of Trustee Harvey the committee decided to pay the bill.

Use Wire Screen.  
Mrs. McCulley thought some wire netting should be put along the top of the fences surrounding the school grounds in order to put an end to the complaints, and make it possible for the children to enjoy their games. It was decided that wire netting be put along the fences surrounding the play-grounds of the Scott and Myrtle Street Schools.

Trustee A. Conley, chairman of the sports committee, stated that Aldermen C. S. Butler and J. Jago of No. 4 committee of the city council, accompanied by President W. Gifford, the executive of the baseball league, had waited on him last week and reported that the league wanted the use of the baseball diamond and the grandstand at Pinafore Park for the 24th of May. Mr. Conley explained that the committee had asked the council for the park privileges early in the year, and understood that the baseball park was included.

Board Meets Council.  
No. 4 committee claimed, he continued, that only the park proper had been reserved for the board of education, and not the grandstand and baseball diamond. Mr. Conley reported that he had asked Aldermen Butler and Jago and Mr. Gifford to meet the board of education at its regular meeting Monday night to see if some agreement could be reached. If it is not available, the sports will have to be called off.

He also pointed out that in view of the fact that six or eight thousand people would be drawn to the park on that day he thought some consideration should be shown in the matter.

A communication was received from Miss Chamberlain, of the Myrtle street cottage kindergarten, stating that she required cupboard accommodation and requesting the board to do something in the matter.

Buy School Cupboard.  
Mrs. McCulley explained that the letter had been sent on her recommendation, and she thought the request reasonable and moved that the cupboard be put in to protect the kindergarten supplies.

Trustee Harvey wanted one that could be easily moved to another building, as the cottage is not permanent. This point was incorporated into the motion and carried. A letter was received from C. F. Young, janitor at the Collegiate, asking for repairs to the eaves, leaks in the roof and some new blinds. Mr. J. J. Martin also sent a communication asking to have the ground north of the school levelled by the use of cinders.

Trustee Conley moved that the necessary repairs be made at the Collegiate and the playgrounds put in shape.

Complains of Ventilation.  
In his report Dr. A. Voeden, principal of the Collegiate, recommended that as the rear classroom in the G. W. V. A. had proved entirely unfit for pupils, the ventilation and light being bad, the class be moved immediately to the Lower School laboratory at the Collegiate Institute, so that, as far as possible, the pupils may make up for their handicap during the last two terms.

## DEFER ARRAIGNMENT OF KALAMAZOO PRIEST

Alienists Are Expected To Inquire Into Sanity of Father Dillon.

Associated Press Despatch.  
Kalamazoo, Mich., April 14.—Arraignment of Father Charles Dillon, charged with the murder Thursday night of his superior, Rev. Father Henry O'Neill, pastor of St. Augustine's Parish, was postponed late yesterday at the direction of Judge George V. Welner in circuit court until Monday.

Postponement was granted at the request of counsel for Father Dillon, although the priest had made known his willingness to enter a plea of guilty to a charge of first degree murder. It was indicated that alienists might inquire into the sanity of the accused man.

Father Dillon, a member of the Carthusian Fathers' Order, and formerly a missionary of the church in many countries, declared that he wants to go at once to Jackson or Marquette (where state prisons are located), and insisted he is perfectly sane. He remains calm, and manifests no sign of remorse because of his deed.

Father McCullough, the only eyewitness of the shooting, made a statement to officers today.

## Hospitality of the Hallway

Whether Large Or Small It Should Both Look and Be Inviting.

The hallway offers many opportunities which are frequently overlooked by home furnishers—and the first of these is hospitality. The hallway, whether large or small, should both look and be inviting, and as its gives the visitor the first impression of the house, it should be in good taste and in a gracious blend of the formal and the informal. If one leans one way or the other, it is better to express formality, in order that the most intricate rooms of the house may thus give, in contrast, the greater expression of personality and informality.

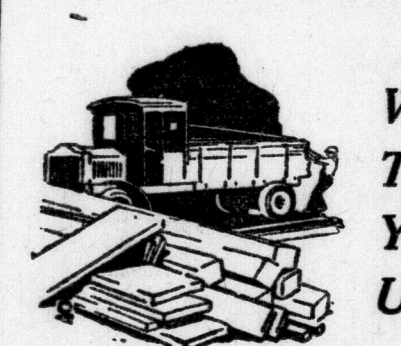
There are so many different types of hallways, from the extremely small one to the "living hall" sort, that it is unwise to attempt to make specific suggestions. Certainly the effect of hospitality is most directly conveyed, if there is sufficient room, by the use of comfortable chairs or a sofa.

## STEAMER ARRIVALS.

New York, April 13. — President Roosevelt, Bremen; Maartens, Southampton; Taormina, Naples. Copenhagen, April 10.—Sellig, Olav, New York.

Danzig, April 9.—Esthonia, New York.

Look for the STAR SPECIAL in each Furniture Ad in today's paper.



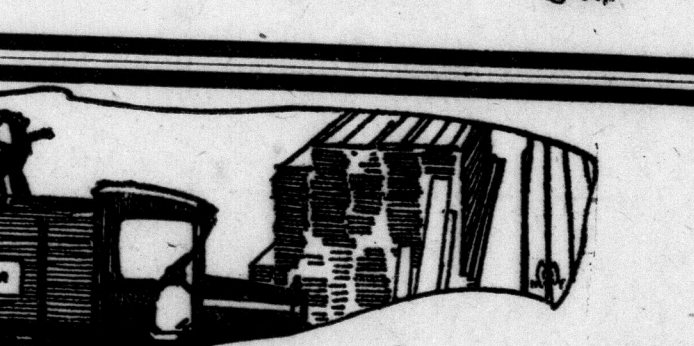
## LUMBER and MILL WORKS

With Service and Satisfaction at reasonable prices.

L. H. MARTYN & CO.

Lumber and Builders' Supplies.

1151 YORK ST. PHONE 5151.



## ALL KINDS OF LUMBER

Hardwood flooring, sash, doors, frames, and all interior finish. Lath and shingles, asphalt roofings, wall board.

Our prices are exceptionally fair and quality is always maintained. Delivery anywhere in the city. We will appreciate the opportunity to figure on your next contract.

CLATWORTHY LUMBER CO., LTD.

Glasgow St. and C.P.R. tracks, (Just East of Quebec St.) Phone 6980

## L.S.C.I. GLEE CLUB PROVES ABILITY IN FIRST CONCERT

Pupils of New High School Will Stage Performances Yearly.

## E. W. QUANTZ DIRECTS

Varied Musical and Vocal Program Delights Large Audience.

One hundred students of the London South Collegiate Glee Club last night entertained a highly appreciative audience in their first annual concert staged under the direction of E. W. G. Quantz.

The school auditorium was well filled and the response of the audience to the seven musical numbers presented was real and spontaneous. Forty girls and twenty boys furnished acceptable choruses and a number of individual selections proved popular.

As was announced by Hilas Tempin, president of the organization, last evening's musical entertainment was the first of a series of concerts to be produced annually. If the future of the Glee Club can be measured by the results attained in its initial public exhibition, success will be permanent.

The cultivation of musical talent in high schools must be recognized as one of the most needed educational features in any community. The charm and pleasure which comes of an early development of cultured musical tastes cannot be too strongly emphasized. And the work of the South London Collegiate in fostering an appreciation of classical composition, revealing the delights of musical understanding, was well indicated in the performance given by Mr. Quantz's pupils.

Voices Blend Well.

The mixed voices proved eminently harmonious and blended admirably with the creditable efforts of a juvenile orchestra. Eric Chapman in a vocal solo, "If Winter Comes," sang with good tonal quality and his number was roundly applauded. Maxine Richardson, chorus, "The Sailors' Dance," the boys of the Glee Club; violin solo, "Russian Dance," Mr. Fred Milner, chorus, "A Merry Life," Mrs. E. A. Miller and Glee Club; cello solo, "Andante Cantabile," Rev. G. Quintin Warner, chorus, "Battle Hymn," Glee Club and orchestra.

Part 2—Gavotte, "Liselette," the orchestra; chorus, "Cornish Sea Song," the Glee Club; piano solo, "Sons of the Sea," Miss Elsie Currie; chorus, "The Clang of the Forge," the

Glee Club; solo, "Just That One Hour," Mr. Charles Jolley; chorus, "Shout ALOUD in Triumph," Glee Club and Orchestra; cello solo, selected, Rev. G. Quintin Warner; chorus, "In Spain," the Glee Club.

Special to The Advertiser.

Waterloo, April 14.—The Waterloo gas department will be reorganized.

This has been decided upon by Thos. A. Giernor of Brampton, the new superintendent, who has assumed charge.

The town is in the unenviable position of having expensive gas, and he will endeavor to economize and improve the method of manufacture so that a gas price reduction may be made possible.

BUILD CABLE SHIP.

Special Cable to The London Advertiser.

Paris, April 14.—Vice-President Giscard of the Western Union signed a contract yesterday for the construction at St. Nazaire of a cable-laying ship to be used in Atlantic waters. The ship will have a displacement of 2,300 tons.

platform, sang "A Merry Life" to the enjoyment of all.

Rev. Q. Warner added the deft hand of experience to the program by contributing well received numbers on the cello.

Praise Mr. Quantz.

The work of Mr. Quantz in schooling his pupils for the event received commendation in loud applause when Hilas Tempin made reference to his conscientious and adequate teaching. Zest was added when the audience displayed their vocal qualifications by accompanying the entertainers in singing school songs composed by students.

Part 1—March, "Prepared," the L. S. C. I. Orchestra; chorus, "The Soldiers' Chorus," the L. S. C. I. Glee Club; solo, "If Winter Comes," Eric Chapman; piano solo, "Hilarity," Miss Maxine Richardson; chorus, "The Sailors' Dance," the boys of the Glee Club; violin solo, "Russian Dance," Mr. Fred Milner; chorus, "A Merry Life," Mrs. E. A. Miller and Glee Club; cello solo, "Andante Cantabile," Rev. G. Quintin Warner; chorus, "Battle Hymn," Glee Club and orchestra.

Part 2—Gavotte, "Liselette," the orchestra; chorus, "Cornish Sea Song," the Glee Club; piano solo, "Sons of the Sea," Miss Elsie Currie; chorus, "The Clang of the Forge," the

Glee Club; solo, "Just That One Hour," Mr. Charles Jolley; chorus, "Shout ALOUD in Triumph," Glee Club and Orchestra; cello solo, selected, Rev. G. Quintin Warner; chorus, "In Spain," the Glee Club.

Special to The Advertiser.

Waterloo, April 14.—The Waterloo gas department will be reorganized.

This has been decided upon by Thos. A. Giernor of Brampton, the new superintendent, who has assumed charge.

The town is in the unenviable position of having expensive gas, and he will endeavor to economize and improve the method of manufacture so that a gas price reduction may be made possible.

BUILD CABLE SHIP.

Special Cable to The London Advertiser.

Paris, April 14.—Vice-President Giscard of the Western Union signed a contract yesterday for the construction at St. Nazaire of a cable-laying ship to be used in Atlantic waters. The ship will have a displacement of 2,300 tons.

platform, sang "A Merry Life" to the enjoyment of all.

Rev. Q. Warner added the deft hand of experience to the program by contributing well received numbers on the cello.

Praise Mr. Quantz.

The work of Mr. Quantz in schooling his pupils for the event received commendation in loud applause when Hilas Tempin made reference to his conscientious and adequate teaching. Zest was added when the audience displayed their vocal qualifications by accompanying the entertainers in singing school songs composed by students.

Part 1—March, "Prepared," the L. S. C. I. Orchestra; chorus, "The Soldiers' Chorus," the L. S. C. I. Glee Club; solo, "If Winter Comes," Eric Chapman; piano solo, "Hilarity," Miss Maxine Richardson; chorus, "The Sailors' Dance," the boys of the Glee Club; violin solo, "Russian Dance," Mr. Fred Milner; chorus, "A Merry Life," Mrs. E. A. Miller and Glee Club; cello solo, "Andante Cantabile," Rev. G. Quintin Warner; chorus, "Battle Hymn," Glee Club and orchestra.

Part 2—Gavotte, "Liselette," the orchestra; chorus, "Cornish Sea Song," the Glee Club; piano solo, "Sons of the Sea," Miss Elsie Currie; chorus, "The Clang of the Forge," the

Glee Club; solo, "Just That One Hour," Mr. Charles Jolley; chorus, "Shout ALOUD in Triumph," Glee Club and Orchestra; cello solo, selected, Rev. G. Quintin Warner; chorus, "In Spain," the Glee Club.

Special to The Advertiser.

Waterloo, April 14.—The Waterloo gas department will be reorganized.

This has been decided upon by Thos. A. Giernor of Brampton, the new superintendent, who has assumed charge.

The town is in the unenviable position of having expensive gas, and he will endeavor to economize and improve the method of manufacture so that a gas price reduction may be made possible.

BUILD CABLE SHIP.

Special Cable to The London Advertiser.

Paris, April 14.—Vice-President Giscard of the Western Union signed a contract yesterday for the construction at St. Nazaire of a cable-laying ship to be used in Atlantic waters. The ship will have a displacement of 2,300 tons.

platform, sang "A Merry Life" to the enjoyment of all.

Rev. Q. Warner added the deft hand of experience to the program by contributing well received numbers on the cello.

Praise Mr. Quantz.

The work of Mr. Quantz in schooling his pupils for the event received commendation in loud applause when Hilas Tempin made reference to his conscientious and adequate teaching. Zest was added when the audience displayed their vocal qualifications by accompanying the entertainers in singing school songs composed by students.

Part 1—March, "Prepared," the L. S. C. I. Orchestra; chorus, "The Soldiers' Chorus," the L. S. C. I. Glee Club; solo, "If Winter Comes," Eric Chapman; piano solo, "Hilarity," Miss Maxine Richardson; chorus, "The Sailors' Dance," the boys of the Glee Club; violin solo, "Russian Dance," Mr. Fred Milner; chorus, "A Merry Life," Mrs. E. A. Miller and Glee Club; cello solo, "Andante Cantabile," Rev. G. Quintin Warner; chorus, "Battle Hymn," Glee Club and orchestra.

Part 2—Gavotte, "Liselette," the orchestra; chorus, "Cornish Sea Song," the Glee Club; piano solo, "Sons of the Sea," Miss Elsie Currie; chorus, "The Clang of the Forge," the

Glee Club; solo, "Just That One Hour," Mr. Charles Jolley; chorus, "Shout ALOUD in Triumph," Glee Club and Orchestra; cello solo, selected, Rev. G. Quintin Warner; chorus, "In Spain," the Glee Club.

Special to The Advertiser.

Waterloo, April 14.—The Waterloo gas department will be reorganized.


This has been decided upon by Thos. A. Giernor of Brampton, the new superintendent, who has assumed charge.

The town is in the unenviable position of having expensive gas, and he will endeavor to economize and improve the method of manufacture so that a gas price reduction may be made possible.

BUILD CABLE SHIP.

Special Cable to The London Advertiser.

Paris, April 14.—Vice-President Giscard of the Western Union signed a contract yesterday for the construction at St. Nazaire of a cable-laying ship to be used in Atlantic waters. The ship will have a displacement of 2,300 tons.



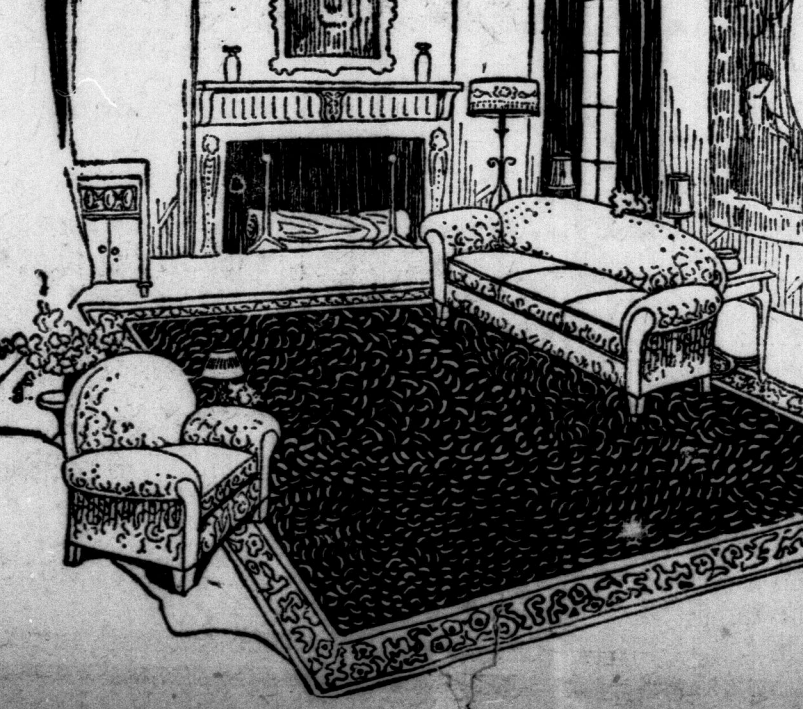
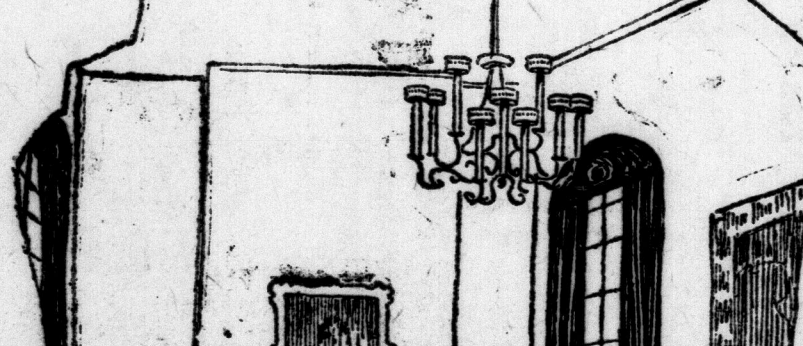
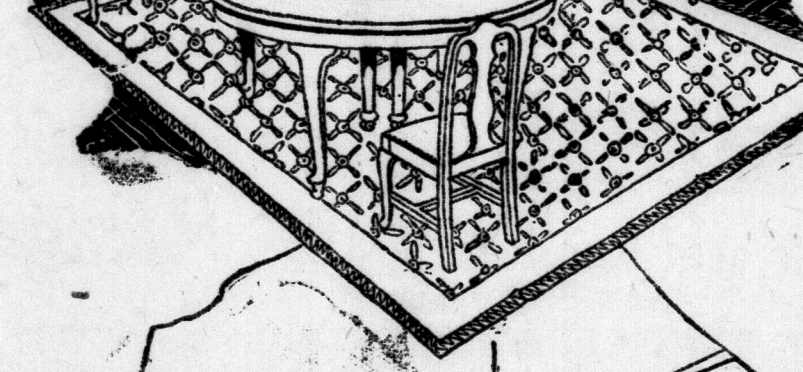
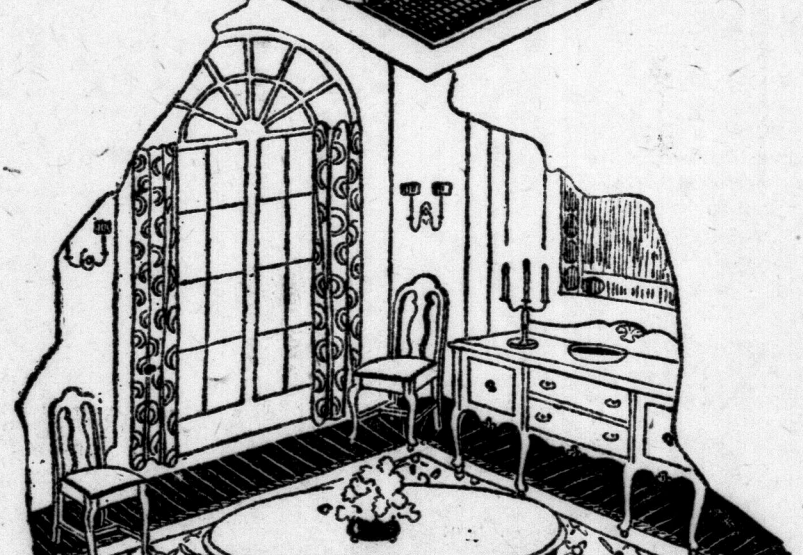
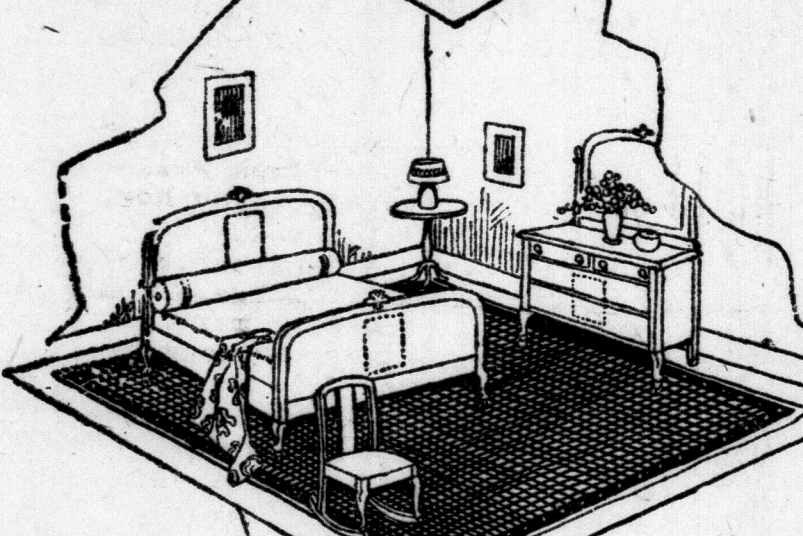
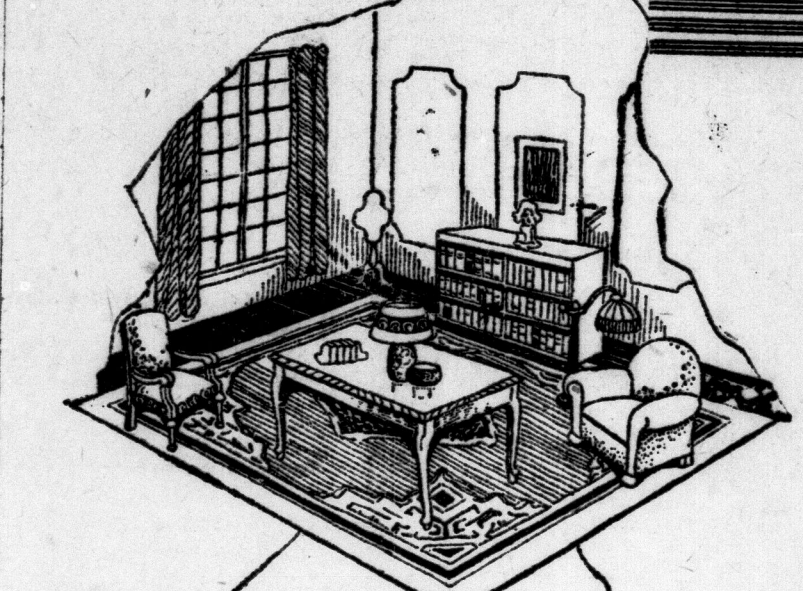
Beautify your home, increase its value and lessen housework with SEAMAN-KENT

## HARDWOOD FLOORING

IT COSTS LESS THAN YOU THINK

## J. S. FERGUSON

481 RICHMOND ST. PHONE 390-F.



**Kingsmill's**

Come To This Magnificent Exhibition All Next Week

# Spring Furniture Openings

Featuring Better Furnished Homes

The whole store has been given over to Home Furnishing Displays and home things are displayed everywhere. In the Furniture Section (second floor), where the main exhibit will be staged, complete suites will be arranged in the most modern manner—throughout the store, on the main floor, in the Floor Covering and Drapery sections and in the basement, will be seen displays suggesting all modern equipment, home furnishings and beautifying ideas.

We invite you to come and view these exhibits with the assurance that you will be delighted with what is shown. Whether you have purchases to make or not, you'll be interested in the new and beautiful things for your spring re-furnishing.

Superior Quality Furniture  
For Better Furnished Homes

Carpets, Room Rugs and Linoleums  
China and Glass Linens  
Curtains and Draperies  
Kitchen Ware

This Item for Monday Only—

## OAK BUFFETS

\$22, \$25, \$50, \$60

At these four prices we have Quartered Solid Oak or Oak Finished Buffets at away less than their usual value. They are new style quality goods reduced for one day as a special inducement to have you buy here on Monday.

**Kingsmill's**