

CHURCH DAY SCHOOL
Major Street, Toronto
SISTERS S. JOHN THE DIVINE
KINDERGARTEN and
ELEMENTARY DEPARTMENT

Bishop Bethune
College, Oshawa, Ontario

UNDER THE CHARGE OF
The Sisters of St. John the Divine
Visitor, the Lord Bishop of Toronto.
Preparation for the University.

For terms and particulars apply to the
SISTER IN CHARGE, or to
The Sisters of St. John the Divine
MAJOR STREET, TORONTO

Trinity College School
PORT HOPE, Ont.
FOUNDED 1864
RESIDENTIAL SCHOOL FOR BOYS
Visitor—The Lord Bishop of Toronto.
For Calendar and all particulars apply to
REV. OSWALD RIDGWAY, M.A., LL.D.,
Head Master.

A Telegraph Operator
has pleasant work, gets good wages and
rises to the highest positions. We teach
it thoroughly and quickly; also railroad
rules, signals, etc., and start our Graduates
in telegraph service. Our school is recom-
mended by telegraph operators and railroad
officials. Write for terms and prospectus.

CANADIAN SCHOOL OF TELEGRAPHY
Cor. Queen and Yonge Streets, Toronto.

NEW TERM OPENED
January 4th, at the

BRITISH AMERICAN
Business College
Y.M.C.A. BLDG., TORONTO.
Thousands of students attend our classes, day and
evening, and are placed by us in good positions.
All subjects carefully taught by expert teachers.
Particulars free.
W. BROOKS, Principal.

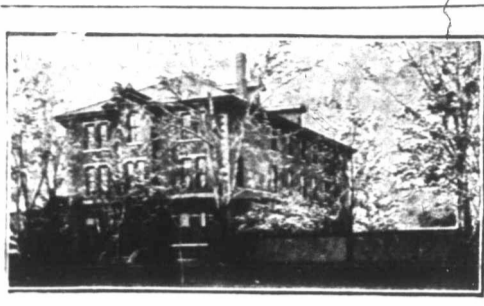
ST. ALBAN'S CATHEDRAL SCHOOL
Toronto—Incorporated
For BOARDERS and DAY BOYS.
Chairman—His Lordship the Bishop.
A thoroughly qualified staff. For prospectus address
M. E. MATTHEWS, Principal.

CHURCH BRASS WORK
Eagle and Rail Lecterns, Altar Vases, Ewers, Candi-
sticks, Altar Desks, Crosses, Vesper Lights, Altar
Rails, Etc. Chandeliers and Gas Fixtures.
CHADWICK BROTHERS
(Successors to J. A. Chadwick)
MANUFACTURERS
182 to 190 King William St. HAMILTON, Ont.

COWAN'S Healthful
and Nutritious
Hygienic
Cocoa...
Sold in 1 lb., 1/2 lb., and 1 lb. Tins only
Absolute Purity

FAVORABLY KNOWN SINCE 1826. **BELLS**
HAVE FURNISHED 35,000
CHURCH, SCHOOL, & OTHER
MENEELY & CO. PUREST BEST
WEST-TROY, N.Y. GENUINE
BELL-METAL
CHIMES, ETC. CATALOGUE & PRICES FREE.

Church
Brass Work
MEMORIAL
BRASSES
RAILS, VASES
PRITCHARD ANDREWS
CO. OF OTTAWA, LIMITED
133 Sparks St., OTTAWA



"Glen Mavor"
RESIDENTIAL AND DAY SCHOOL
FOR GIRLS
651 Spadina Avenue, Toronto.
Thorough English Course. Individual Attention.
Pupils prepared for the Universities
and for Examinations in Music and Art. Large
staff of Resident and Visiting Teachers.
MISS VEALS,
LADY PRINCIPAL.

WESTBOURNE School for Girls
340 Bloor Street W., - TORONTO, Can.
Re-opens September 10th, 1903.

A Residential and Day School, well appointed, well
managed and convenient. Specialists in each de-
partment. Affiliated with the Toronto Conservatory of
Music. Dr. Edward Fisher, Musical Director;
F. McGillivray Knowles, R.C.A., Art Director. For
announcement and information, address the principals.
MISS M. CURLETTE, B.A.
MISS F. E. DALLAS, Mus. Bach.

ST. MONICA'S
Residential and Day
School for Girls.
170 Bloor St. W., - - Toronto
Re-opens Thursday, Sept. 10th.

Thorough course in English, Languages, Music,
Art, Elocution and Domestic Science, and Physical
Culture. Prepares for University and Departmental
Examinations.
Kindergarten and Primary Departments.
Teachers, Specialists in each Department.
A Home School. Extensive Grounds.
For Prospectus apply to
MISS PHILLPOTTS,
LADY PRINCIPAL.

Edgehill, Church School for Girls
WINDSOR, NOVA SCOTIA
INCORPORATED 1891.
The Bishop of Nova Scotia, Chairman Board of
Trustees. The Bishop of Fredericton, member
of Board of Trustees, ex-officio.
Miss Lefroy, of Cheltenham Ladies' College, England,
Principal, assisted by Eleven Resident Experienced
Governesses from England, (five of whom are special-
ists in the Music and Art Departments), and one non-
resident Instructor, Housekeeper, Matron and Nurse.
Extensive buildings, with capacity for 100 Resi-
dents: Heated by Hot Water, Lighted by Electricity
Grounds covering eight acres, with Lawns for Tennis,
Croquet, Basket Ball, Hockey, &c. School Dairy and
Laundry. Preparation for the Universities.
LENT TERM begins on Wednesday,
January 13th, 1904.
For Calendar apply to **DR. HIND.**

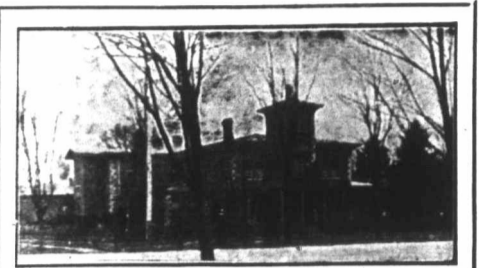
School of the Sisters of the
Church, 106 Beverley Street,
TORONTO, Ont.
Boarding and Day School for Girls.
Terms Moderate Vacancies for Boarders.
ADDRESS. - SISTER IN CHARGE.

CHURCH WINDOWS,
FURNITURE.
R. G. GEISLER, Marble and Metal Work
56 West 8th St. (near 6th Ave.), New York.

LUXFER ELECTRO-GLAZED
Church Window
Decorative Glass.
WRITE FOR PRICES.
Luxfer Prism Company, Limited,
100 King Street West, Toronto.

HARRINGTON'S
TUBULAR
Chime Bells
Lighter in Weight,
Sweeter in Tone,
Cheaper in Price
Than the ordinary bell
COVENTRY, ENG.
CASTLE & SON
20 University St.,
Montreal Agents

In answering any advertisement it
is desirable you should mention
The Canadian Churchman.



ST. AGNES' SCHOOL.
A Church School for Girls,
ELMPOOL, BELLEVILLE.
Patron—The Lord Bishop of Ontario.
Prepares for Matriculation. Conservatory of
Music Examinations held at the School.
Courses in Art, Physical Culture, Domestic
Science. Beautiful building with all modern
improvements—extensive grounds. TERMS
MODERATE. For prospectus apply to
MISS F. E. CARROLL.

HIGHER EDUCATION FOR GIRLS
The Bishop Strachan School
(Thirty-seventh Year)
For Calendar apply to Miss ACRES, Lady
Principal, Wykeham Hall, Toronto.
The Parkdale Church School
FOR GIRLS—151 DUNN AVE.
KINDERGARTEN—FOR BOYS
and GIRLS
For Calendar apply to
Miss MIDDLETON, Lady Principal.

MEMORIAL WINDOWS.
Our productions are
extensively adopted.
Robert McCausland,
Limited
86 Wellington St. West, TORONTO



CHURCH BRASS WORK of every description
made to order on shortest notice. Designs furnished
and satisfaction guaranteed.
KEITH & FITZSIMONS, LIMITED
111 King Street West, Toronto.

STAINED GLASS
MEMORIAL : : :
: : : : WINDOWS
BRASSES AND
DECORATIONS
Castle & Son
20 UNIVERSITY ST., MONTREAL

MEMORIALS
AND
DOMESTIC
ART
GLASS
DOMINION STAINED GLASS
EST. CO. 1881
34 RICHMOND ST. E., TORONTO.
Trusky & Booth Proprietors

JONES AND WILLIS
Church Furniture Manufacturers
Metal, Wood, Stone
and Textile Fabrics.
STAINED GLASS ARTISTS
43 Great Russell Street, LONDON, ENG
Opposite British Museum.
Also at Birmingham and Liverpool

THE CANADIAN NORTH-WEST
HOMESTEAD
REGULATIONS.

Any even numbered section of Dominion Lands in
Manitoba or the North-West Territories, excepting
8 and 26, which has not been homesteaded, or re-
served to provide wood lots for settlers, or for other
purposes, may be homesteaded upon by any person
who is the sole head of a family, or any male over 18
years of age, to the extent of one quarter section, of
160 acres, more or less.

ENTRY.
Entry may be made personally at the local land
office for the district in which the land to be taken is
situate, or if the homesteader desires, he may, on
application to the Minister of the Interior, Ottawa,
the Commissioner of Immigration, Winnipeg, or the
local agent for the district in which the land is situate,
receive authority for some one to make entry for him.
A fee of \$10.00 is charged for a homestead entry.

HOMESTEAD DUTIES.
A settler who has been granted an entry for a
homestead is required by the provisions of the Do-
minion Lands Act and the amendments thereto to
perform the conditions connected therewith, under
one of the following plans:—
(1) At least six months' residence upon and culti-
vation of the land in each year during the term of
three years.
(2) If the father (or mother, if the father is de-
ceased) of any person who is eligible to make a home-
stead entry under the provisions of this Act, resides
upon a farm in the vicinity of the land entered for
by such person as a homestead, the requirements of
this Act as to residence prior to obtaining patent may
be satisfied by such person residing with the father
or mother.
(3) If a settler has obtained a patent for his home-
stead, or a certificate for the issue of such patent,
countersigned in the manner prescribed by this Act
and has obtained entry for a second homestead, the
requirements of this Act as to residence prior to ob-
taining patent may be satisfied by residence upon the
first homestead, if the second homestead is in the
vicinity of the first homestead.
(4) If the settler has his permanent residence upon
farming land owned by him in the vicinity of the
homestead, the requirements of this Act as to resi-
dence may be satisfied by residence upon the said
land.

The term "vicinity" used above is meant to indi-
cate the same township or an adjoining or cornering
township.
A settler who avails himself of the provisions of
Clauses (2), (3) or (4) must cultivate 30 acres of his
homestead, or substitute 20 head of stock, with build-
ings for their accommodation, and have besides 20
acres substantially fenced.
Every homesteader who fails to comply with the
requirements of the homestead law is liable to have
his entry cancelled, and the land may be again
thrown open for entry.

APPLICATION FOR PATENT.
Should be made at the end of the three years, before
the Local Agent, Sub-Agent, or the Homestead
Inspector. Before making application for patent
the settler must give six months' notice in writing to
the Commissioner of Dominion Lands, at Ottawa,
of his intention to do so.

INFORMATION.
Newly arrived immigrants will receive at the Immi-
gration Office in Winnipeg or at any Dominion Lands
Office in Manitoba or the North-West Territories,
information as to the lands that are open for entry,
and from the officers in charge, free of expense, ad-
vice and assistance in securing land to suit them.
Full information respecting the land, timber, coal
and mineral laws, as well as respecting Dominion
Lands in the Railway Belt in British Columbia, may
be obtained upon application to the Secretary of the
Department of the Interior, Ottawa, the Commis-
sioner of Immigration, Winnipeg, Manitoba, or to
any of the Dominion Land Agents in Manitoba or
the North-West Territories.
JAMES A. SMART,
Deputy Minister of the Interior.

N.B.—In addition to Free Grant Lands to which
the regulations above stated refer, thousands of acres
of most desirable lands are available for lease or
purchase from railroad and other corporations and
private firms in Western Canada.

J. YOUNG
THE
LEADING Undertaker and
359 YONGE ST. Embalmer
Telephone 679