

The best paint for your house

Paint-making is more than mixing some pigments and liquid with a paddle. This explains why you can give best protection to your house if you use scientifically prepared paint.

Real paint—the kind you want—is made scientifically, in a way that calls for expert paint-makers, scientific selection of materials, accurate proportions, immense grinding and mixing machinery and other factory equipment. No hand-mixed paint can begin to compare with



Careful tests have shown that good wearing and protecting qualities of paint depend upon the fineness of the grinding as well as upon the accurate proportions of the materials, and their high quality. "High Standard" is made of the choicest materials and in the exact proportion that years of exposure tests have proved to give best results. No one can approach this in home-made paint.

For interior walls and ceilings use Lowe Brothers Mellotone—the beautiful finish that is washable, fadeless and does not easily scratch or mar. Adapted to every room in the house.

Have the best looking house in your neighborhood. Ask your local "High Standard" dealer-agent to give you paint information and color combinations for exteriors, interior walls, floors, woodwork, etc.

Valuable Books—Free Experts have prepared some valuable books—"Homes Attractive from Gate to Garage," and "Mellotone Your Walls." These with special color cards showing how to secure good results with your barns, implements, vehicles, sent free upon request. Write today.

Lowe Bros., Limited
261 to 267 Sorauren Ave.,
Toronto, Canada.

CUNARD LINE

Canadian Service
New Magnificent Steamers.

ANDANIA ALAUNIA
ASCANIA AUSONIA

One Class (II) Cabin. Low Rates.

IMMIGRATION DEPARTMENT

FARM HELP SUPPLIED

No Charge Made.

Write immediately, stating whether married couples, families or single persons wanted; also if experienced, partly experienced or inexperienced help required.

State wages and conditions. Regulation forms supplied upon application. Utmost care given to selection. Apply:

The Cunard Steamship Co., Ltd.
114 King Street West, Toronto.

THE IMPERIAL BAG HOLDER



enables one man to do the work of two in filling bags. Does the work better in every way, does it quicker, thus it

SAVES YOU MONEY

It is portable, adjustable, holds any size bag securely, yet will not tear it. Price only \$3 each. Send today or ask your dealer.

THE IMPERIAL BAG HOLDER COMPANY
Lucknow, Ontario

Splendid proposition for agents.
1249

Ventilation In Your Barn



Pedlar's "Superior" Barn Ventilator



Too many farmers are content to overlook the important question of proper ventilation in their barns, yet nothing is more essential to the health of their live stock and the preservation of their crops and buildings.

Pedlar's "Superior" Barn Ventilator

is especially adapted for ventilating barns and large buildings.

It provides a constant upward current without any down draught, working continuously and most efficiently. It is priced much lower than other ventilators not nearly so satisfactory. Fully protected from the bird nuisance.

Get our Folder on "Barn Ventilation."

For Roofing your Barns, the big "George" Shingle (24 in. x 24 in.), with its positive four-side interlocking device, affords ideal protection against fire, wind, snow, and rain.

And for your dwellings and out-houses the "Oshawa" Shingle (16 in. x 20 in.), of identical quality and design, is equally effective. Get our Shingle booklet.

Best grade Corrugated Siding, and a variety of Sheet Metal products always in stock at all our branches.

Write nearest address for Catalogue 22 L. F.

THE PEDLAR PEOPLE, Limited

86 King St., London, Ont.
HEAD OFFICE AND WORKS: OSHAWA, ONT.
Large and varied stocks always carried at

Established 1861.

Toronto, Ottawa, Montreal, Winnipeg, London, Chatham,
St. John, Quebec, Sydney, Halifax, Calgary, Vancouver.



G. A. Pedlar

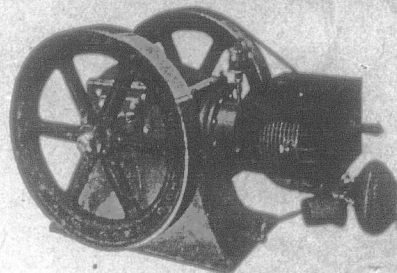
9B

WE STAND BEHIND OUR ENGINE

Every "NEW-WAY" Air-Cooled Engine is guaranteed to cool and deliver its rated power in any climate for any length of time.

Give it the ordinary care necessary to any piece of machinery---overheat it---and you will get your money back and big interest.

THE "New-Way"



Ordinary care on our engine means less care than is necessary on ordinary, or water-cooled engines.

No Freeze-ups.
No Water.
No Bursted Hoppers or Pipes.
No Oil Holes.
No forgotten bearings.

A SELF-CONTAINED, SELF-OILED, SELF-OPERATED, ECONOMICAL, HEAVY DUTY, DIRECT COOLED ENGINE

Don't even think of buying an engine until you have seen the "NEW-WAY" in operation.

WRITE FOR CATALOGUE DC 12 WHICH TELLS HOW TO MAKE MONEY.

The "NEW-WAY" Motor Company of Canada, Ltd., Welland, Ont.