

Fig. 3 is of an unusual pattern. When perfect the end of the base, now fractured, was probably almost as long as the stem shown in the engraving. In general design it approaches to the platform or "monitor" type, a form seldom attempted in clay. Peculiar as this pipe is in many respects, it is the lower side of the base that attracts most attention, for here has been moulded a human face. The nose, mouth and one eye remain, and any lingering doubt is dispelled on

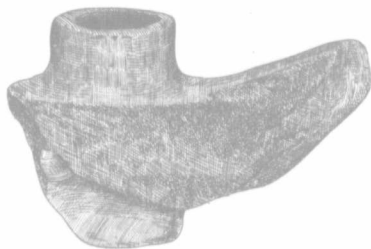


FIG. 3.



FIG. 4.

finding the nostrils distinctly marked. The imitation is a rude one, but nothing is more certain than that the pipe-maker intended to represent a face in this very unusual position. Fig. 4 illustrates the lower side of the base. This pipe is from Brant county, and is part of the collection procured from Chief A. G. Smith (De-ka-non-ra-neh), of the city of Brantford.

#### STONE PIPES.



FIG. 5.

The pipe figured here is of a pattern not uncommon among the Hurons. The ornamental portion was carved to face the smoker. The stem is broken off

close to the bowl

This by Mr. W.

The mouth of the bowl in the top

The pipe appears to be made of stone. The stem is broken off. None of the other pipes in the collection. Even when