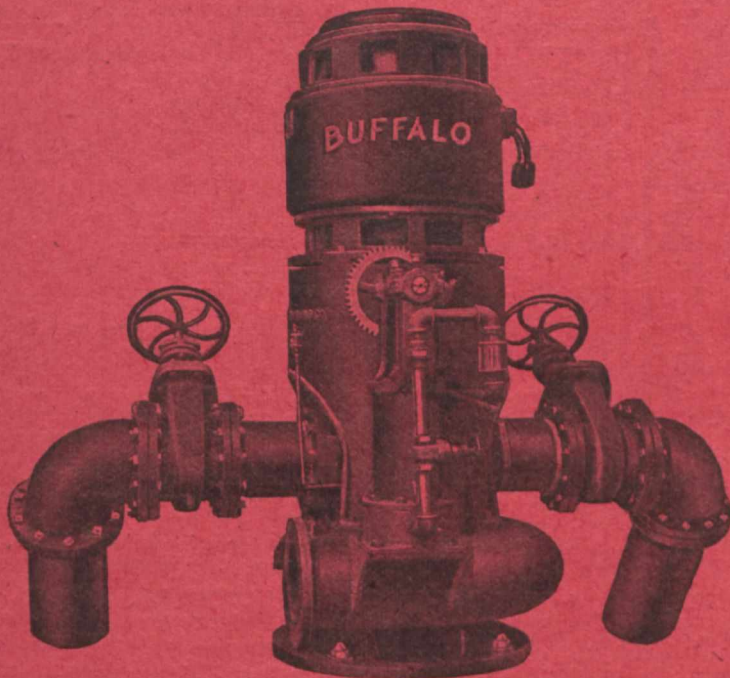


# BUFFALO PUMPS

STEAM — POWER — CENTRIFUGAL — TURBINE



10" Vertical Pump 25 H. P. Motor

Illustration shows one of thirteen units furnished the U. S. Reclamation Service for irrigation work at Deerfield, Kansas, U.S.A. Guarantees of efficiency were greatly exceeded and the pumps are a noteworthy example of the careful design and execution of an important order entrusted to the makers for high efficiency sustained throughout life of the pump.

Buy a "BUFFALO."

Ask for Catalogue

**CANADIAN BUFFALO FORGE COMPANY, LTD.**  
MONTREAL AND TORONTO

53P.

Fourth Edition, Revised & Enlarged

## RAILROAD CONSTRUCTION

THEORY AND PRACTICE

16 mo, xvii + 777 pages, 217 figures, 10 plates.

Morocco, \$5.00

**PREFACE TO FOURTH EDITION.**—In this edition a very extensive revision has been made in the chapter on Earthwork. Table XXXIII, giving the volume of level sections, has been added to the book, with a special demonstration of the method of utilizing this table for preliminary and approximate earthwork calculations. A demonstration, with table, for determining the economics of ties has also been added. In accordance with the suggestions of Prof. R. B. H. Begg, of Syracuse University, additions have been made to Table IV, which facilitate the solution of problems in transition curves. Very numerous and sometimes extensive alterations and additions, as well as mere verbal and typographical changes, have been made in various parts of the book. The chapters on Economics have been revised to make them conform to more recent estimates of cost of operation.

## A Book for the Pocket

The 26th Edition of MOLESWORTH'S POCKET BOOK OF ENGINEERING FORMULAE is now ready, and orders will be filled promptly.

There has been a most careful and complete revision of this useful Pocket Book since the last edition was published and CIVIL, MECHANICAL and ELECTRICAL ENGINEERS will find it, as heretofore, the best and only real Pocket Book. **Price, \$2.00 net.**

By Sir **GUILFORD L. MOLESWORTH,**  
K.C.I.E.

Past President of the Institution of Civil Engineers  
Member of the Institution of Mechanical Engineers  
Fellow of the University of Calcutta

Assisted by

**HENRY BRIDGES MOLESWORTH,**  
M. Inst. C. E.

WITH AN ELECTRICAL SUPPLEMENT

By **WALTER H. MOLESWORTH, M.Inst., E.E., M.Inst.M.E.**

Any one of the above books or in fact any Engineering Book published can be secured through the

**BOOK DEPARTMENT**

**CANADIAN ENGINEER**

MONTREAL

TORONTO

**62 Church Street**

WINNIPEG