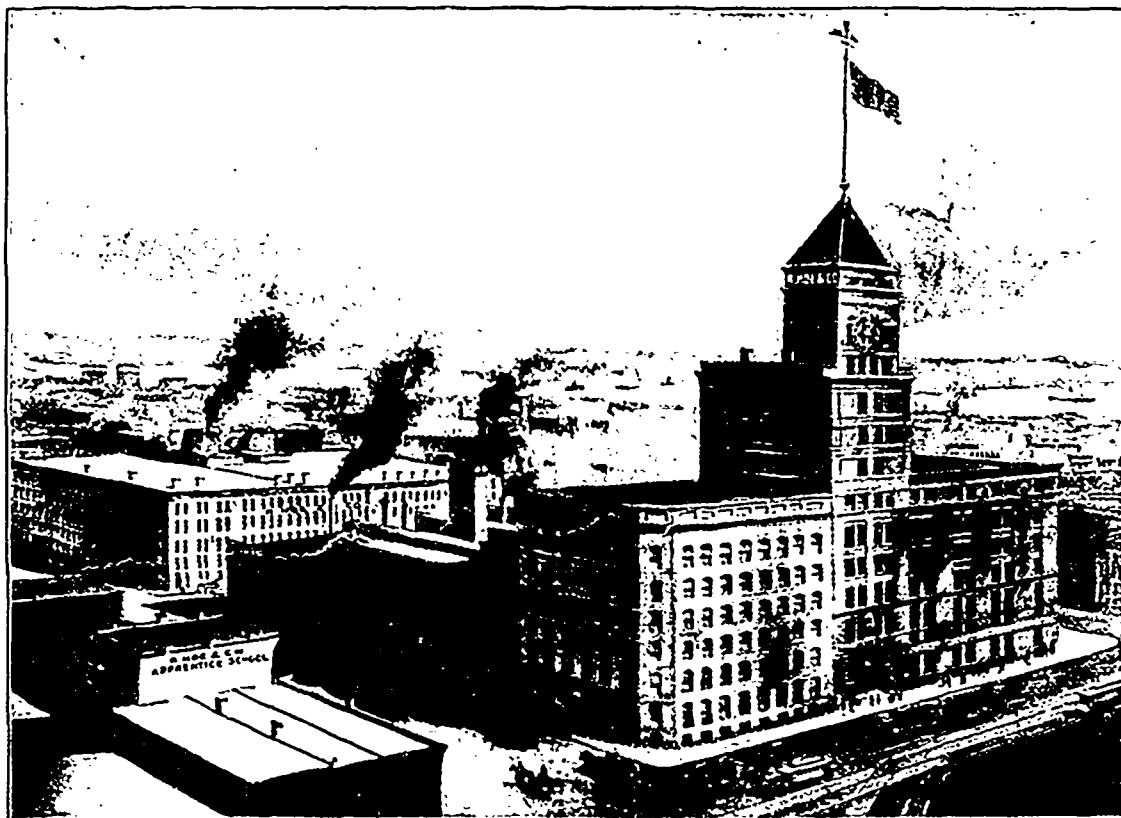


R. HOE & CO.'S NEW YORK WORKS

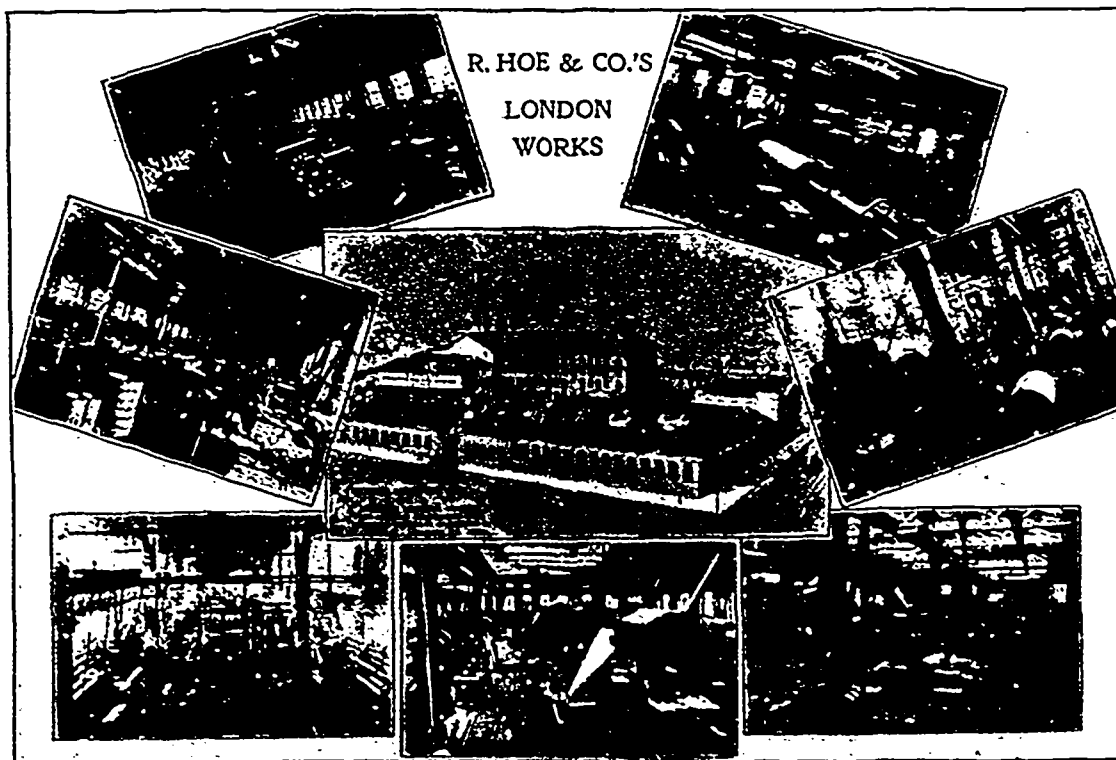


PRINCIPAL OFFICE: 504-520 GRAND STREET, NEW YORK, U.S.A.
Works on Grand, Broome, Sheriff and Columbia Streets.

The recent Addition to our New York works, shown above, gives a combined floor area of 480,000 square feet, or about twelve acres, in New York and London. These enormous Plants are devoted to the manufacture of Printing Presses, from the Octuple Web Perfecting Press, with a running speed of 96,000 8-page Papers per Hour, down to the Washington Hand Press, and the Celebrated....

PATENT CHISEL TOOTH SAW

illustrated on the opposite side of this page, of which 30,000 have been put into Successful Operation in all parts of the Civilized World. Many thousands of these Saws are operating in Canadian mills, from the Atlantic to the Pacific, and their sale to English mill-owners is rapidly extending. This is unquestionably the Best Saw manufactured; Unequalled for Frozen Timber—an Economical, Efficient Tool. Catalogues and Net Prices on Application.



MANSFIELD STREET, BOROUGH ROAD, LONDON, ENGLAND.