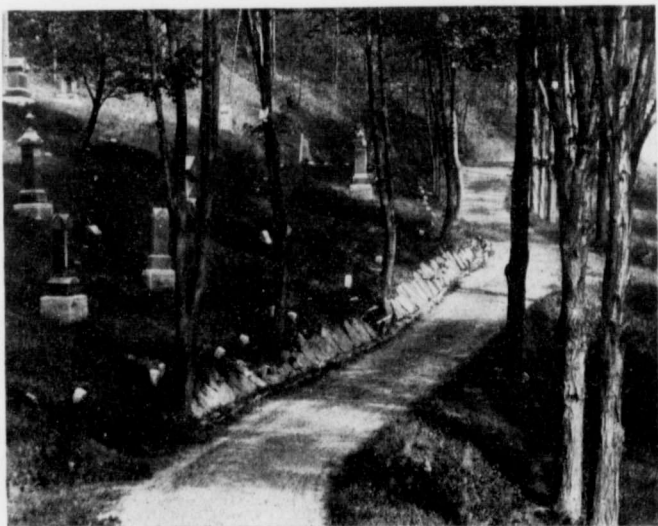




BETWEEN RIDGE AVENUE AND SYLVAN MEADOW

**E**VERY effort has been made to secure rural seclusion and restfulness by preserving much of the natural growth and nature's work of ravines and rolling hills, adding to and improving the same and by planting many varieties of trees and shrubs from the nursery.



SOUTH-WEST VALLEY ROAD