

MAIN CORRIDOR, TECHNICAL SCHOOL, LONDON.

The basement contains the boiler room and accommodation for the heating and ventilating apparatus.

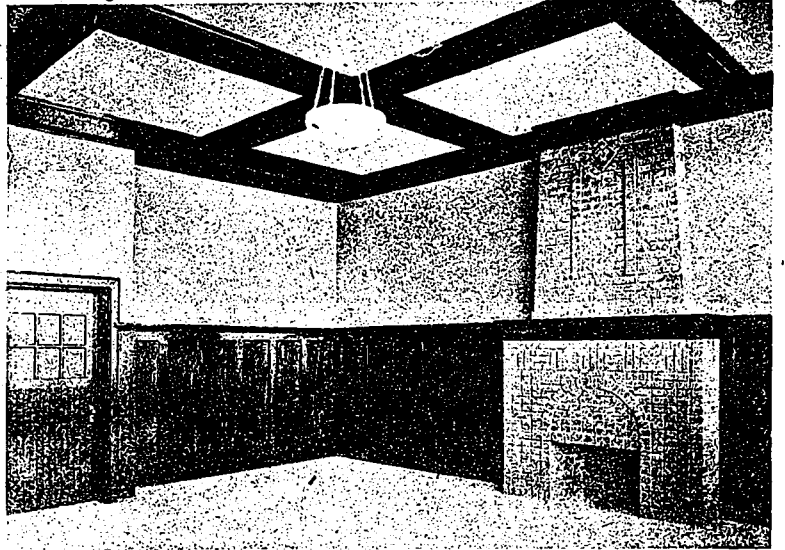
The equipment, though not complete as yet, is ample for the time being and includes special desks, cupboards, filing cabinets, etc., along with the varied pieces of machinery used for teaching the different trades, for which the school was erected; the purpose being to give a general course in all the different departments shown on the plan, thus equipping a pupil to carry on his work to better advantage after securing employment in his chosen vocation.

The lighting, heating and ventilating are of the most modern design.

High School Science Department

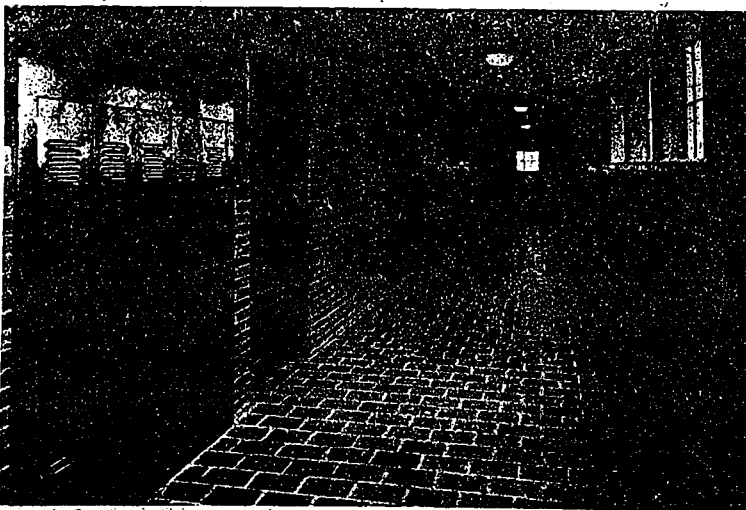
Walter H. Kilham, in the Brickbuilder.

THE problems presented to the architect in the designing of a modern high school, while identical in matters of general detail with those of an elementary school, are much more complicated and varied on account of the many different courses of study, the elaborate apparatus which is installed, and the "collegiate" feature connected with the social life and physical welfare of the pupils. A commercial or vocational high school of the present period combines most of the features which until recently were found only in the larger universities, together with many others which are purely a development of high school education. A high school of a thousand or twelve hundred pupils may require in addition to the regular standard class rooms, 24 by 30 feet, accomodating



BOARD ROOM, TECHNICAL SCHOOL, LONDON.

say thirty-five pupils, a certain number of recitation rooms seating about twenty pupils each; probably one or two study halls; large rooms with single desks and chairs accomodating from seventy-five to one hundred and fifty or more pupils; a library; a science department with laboratories and lecture rooms equipped for instruction in chemistry, physics, and possibly biology and botany; a commercial department for instruction in book-keeping, stenography, typewriting, and banking; rooms for freehand and mechanical drawing; a music room; a department for domestic science, i.e., cooking, housekeeping and sewing; and a manual training department for wood and iron working. In addition to these usual pedagogical requirements some cities introduce facilities for the study of print-



CORRIDOR, SHOWING LOCKERS IN WALL, TECHNICAL SCHOOL, LONDON.