



CALIFORNIA - 1915

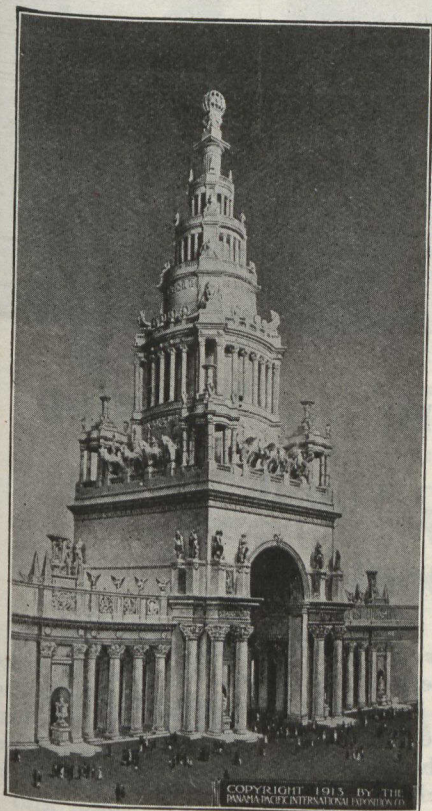
PANAMA EXPOSITIONS

SAN FRANCISCO

Feb. 20th to Dec. 4th, 1915

SAN DIEGO

Jan. 1st to Dec. 31st, 1915



Main Tower or Tower of Jewels

Travel to California via the **Grand Trunk Pacific**. The same fares in most cases (and an additional charge on low excursion fares to cover the cost of meals and berths on Pacific Coast Steamships) apply on this magnificent new scenic route as on the more direct routes from Winnipeg, St. Paul, Chicago and all eastern points. **The New Transcontinental** is as great in magnitude and interest as the Panama Canal. You see the Canadian Rockies at their best and the wonderful Fraser and Skeena Rivers of British Columbia besides enjoying a two days trip through the "Norway of America" on the G.T.P. Coast Steamships—the surest, finest and fastest in that service. A short side trip can be made from Prince Rupert to Alaska, which time and expense might not permit from a southern port. No other transportation company can offer the choice of routes or the attractions that the Grand Trunk System has arranged for 1915 to California and the Pacific Coast.

Lowest Fares

Electric Lighted Trains

Fine Service

Modern Equipment

Unexcelled Dining Car Service

For rates, full particulars and advertising matter, apply to any agent of the Company or to W. E. Duperow, Union Station, Winnipeg; J. Quinlan, Bonaventure Station, Montreal, or C. E. Horning, Union Station, Toronto.

G. T. BELL,
Passenger Traffic Manager,
MONTREAL

W. P. HINTON,
Asst. Passenger Traffic Manager
MONTREAL