



WANTED IMMEDIATELY.
50 Good Miners,
 to work for the Inverness
 Ry. and Coal Company.
 — Apply at the colliery to —
M. S. BEATON,
 Inverness, Aug. '08 **Manager.**

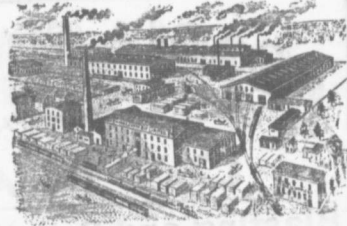
Genuine Garlock's Patents
FOR ALL PURPOSES.
Pipe and Boiler Coverings,
ENGINEERS SUPPLIES.

also
 "Tauril" High Pressure Jointing
 "the Best Sheet Packing yet
 Produced."
THE GARLOCK PACKING CO.
 HAMILTON, ONTARIO.

Used by Collieries in Lancashire, Staffordshire
 & Yorkshire

X TERRA' COLLIERY LAMP OIL.
 For Marsaut, Muesle Deflector or Obval Lamp

PURE WHITE FLAME LOW PRICE
E. WOLASTON, Patent St MANCHESTER
 Sole Representatives for Canada, AUSTEN BROS.,
 Halifax, N. S.



—MANUFACTURERS OF—
RAILWAY STREET and MINING CARS,
CAR WHEELS Church Paws,
FORGINGS & Fittings for Stores, Schools, &c
CASTINGS A SPECIALTY
 Large Stocks of Foreign and Domestic Lumber on Sale.
Rhodes, BUILDING MATERIALS
Curry & co., Ltd. GENERAL
 Branch **ROBBIE STREET, HALIFAX, N. S.** **AMHERST, N. S.**

INTERCOLONIAL RAILWAY

On and after SUNDAY, OCT 11th 1908 trains
 run daily, (Sunday excepted), as follows:—

—TRAINS LEAVE STELLARTON—

No 144 Mixed for Hopewell	5.55
No 79 Mixed for Trenton	6.25
78 Mixed for Hopewell	7.00
18 Express for Halifax, and St. John	7.40
31 Mixed for Pictou Landing	7.45
62 Mixed for Pictou	8.30
65 Mixed for Mulgrave	8.30
19 Express for Sydney	8.10
35 Mixed for Pictou	11.15
56 Mixed for Truro	12.55
130 Mixed for New Glasgow	13.10
85 Express for the Sydney	13.15
30 Express for Halifax and Montreal	13.25
140 Mixed for Pictou	13.45
101 Mixed for Pictou Landing	13.10
22 Mixed for Hopewell	13.50
66 Mixed for New Glasgow	13.55
86 Express for Halifax and St. John	21.50
17 Express for New Glasgow	21.55
66 Express for Pictou	21.55

—TRAINS ARRIVE AT STELLARTON

79 Mixed from Hopewell	6.30
78 Mixed from Trenton	7.30
61 Express from Pictou	7.35
18 Express from New Glasgow	7.35
31 Mixed from Hopewell	7.35
25 Mixed from Truro	8.00
28 Mixed from New Glasgow	10.35
37 Mixed from Pictou	10.35
56 Mixed from Mulgrave	11.00
19 Express from Halifax and St. John	13.70
130 Mixed from Pictou	13.40
85 Express from Halifax and St. John	13.45
30 Express from Sydney	13.45
31 Mixed from Pictou Landing	13.45
77 Mixed from Hopewell	19.25
66 Mixed from Pictou	19.45
86 Express from the Sydney	21.40
17 Express from New Glasgow	21.45
66 Express from St. John and Halifax	21.45

All trains are run by Atlantic Standard time Twenty four
 O'clock is midnight. Montreal, N. B. Oct. 11th 1908.
 Sleeping and Parlor Cars between Halifax and Sydney.
 Dining Car on No. 31 and 37 trains between Halifax
 and Mulgrave. On Nos. 19 and 30 trains between Mulgrave and
 South River.