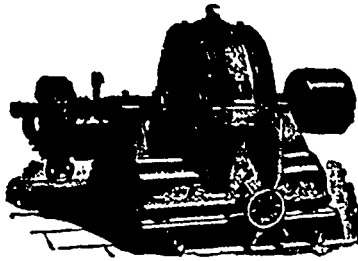


The National Electric Co. EAU CLAIRE, WIS.

... MANUFACTURERS OF ...



500 LIGHT ALTERNATOR.

Bipolar and Multipolar **Power Generators and Motors**
Alternating Self-Contained **Dynamos** Direct Current **Dynamos**

The National Transformers are the best in the market. Our Alternators light the Towns of Oakville, St. Marys, Oshawa, Mount Forest, Palmerston, Grimsby, Port Dover, and hundreds of other towns in Canada and the United States. Ask the companies how they like them. Send for estimates to . . .

JOHN W. SKINNER

or apply at 140 YORK ST., TORONTO.

MITCHELL, ONT.

THE GOLDIE & McCULLOCH CO. [LIMITED.]

MANUFACTURERS OF

Improved Steam Engines and Boilers

± FLOURING MILLS ±

And the Erection of same in the most Complete Style of Modern Improvement.

WOOL MACHINERY, WOOD-WORKING MACHINERY, SAWMILL, SHINGLE AND STAVE MACHINERY

Fire and Burglar Proof Safes and Vault Doors.

Special attention called to the "WHEELOCK" IMPROVED STEAM ENGINE as being unequalled for simplicity, efficiency and economy in working, and especially adapted for Electric Lighting, Street Railways, etc.

— GALT, ONTARIO. —

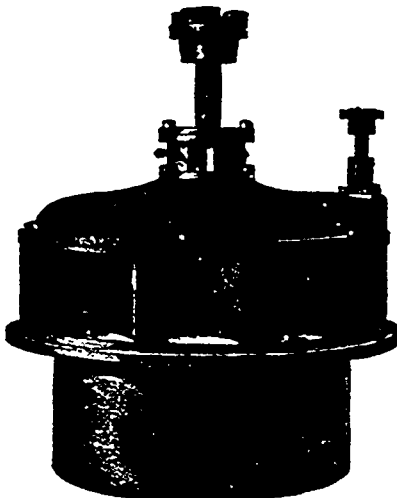
ROBERT GRAHAM

Iron Founder and Machinist

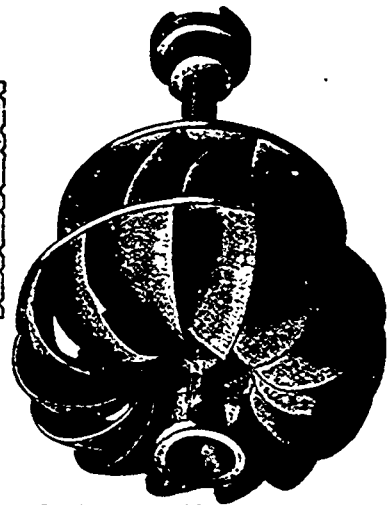
Water Wheels, Engines and Mill Machinery a Specialty.

... OTTAWA, ONT.

THE



STANDARD . . . WATER WHEEL



Cut showing Wheel Removed from Case.

MADE in sizes from 6 inches to 84 inches diameter. Wheel one solid casting. 84 per cent. of power guaranteed. In five pieces. Includes whole of case, either register or cylinder gate. Water put on full gate or shut completely off with half turn of hand wheel, and as easily governed as any engine

Write for Estimates, References and Catalogues of the STANDARD WATER WHEEL, also Milled and Rough Gearing of every size and description; Engines, Mill Machinery and Electric Power Plants; Latest Improved Band Saw Brazing Tables; Shears and Gummers; also Surface Grinder for Shingle Saws.

Please mention the CANADIAN ELECTRICAL NEWS when corresponding with Advertisers