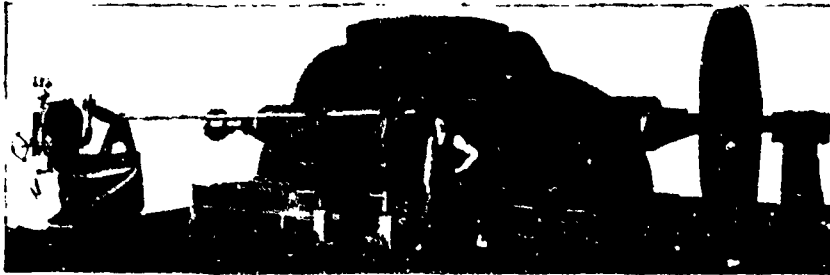


MCCORMICK TURBINES

State your
Requirements
and
send for
Catalogue



Estimates
Furnished for
Complete
Power Plants,
and Results
Guaranteed

Represents a pair of 18-inch McCormick Turbines with Governor and Fly Wheel for regulating speed. The Turbine Shaft is directly connected to a 750 k.w. Generator.

Four Outfits like this, developing 3,000 h.p., and one pair of 54-inch of 1,100 h.p., furnished the Sacramento Electric, Gas & Railway Co., Colson, Cal. Power is transmitted 20 miles.

S. MORGAN SMITH CO.

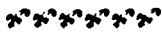
YORK, PA., U.S.A.

...JUST PUBLISHED...

THE
CANADIAN
HAND-BOOK
OF
STEAM
AND
ELECTRICITY



By
William
Thompson.



170 Pages Illustrated
In Strong Cloth Binding

The preparatory chapters are devoted to a concise explanation of the foundation principles of mathematics, a knowledge of which is absolutely essential to the study of Electricity and Engineering. In the succeeding chapters the student is led by gradual stages to a more complete acquaintance with these subjects and is equipped with knowledge sufficient to enable him to pursue his researches to any further extent

Price - 50 Cents

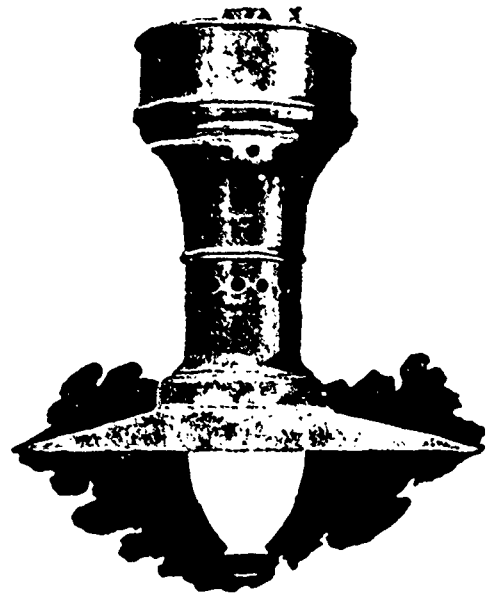
The C. H. MORTIMER PUBLISHING CO.
of Toronto, Limited
Publishers,
TORONTO - CANADA

LITHAN ARC LAMP

FOR ALL CIRCUITS

Constant Potential.
Constant Current.
Alternating.
Railway.
Power.
220 Volts.

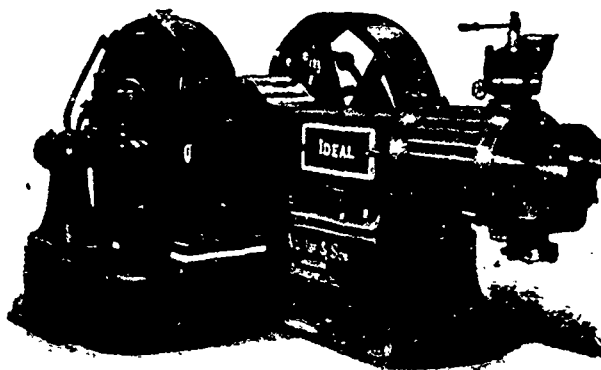
Write for Catalogue.



Our Alternating and Series Lamps have a fixed contact on end of Carbon and do not depend on sliding contacts which burn off in a night.

THE SAFFORD ARC LAMP MFG. CO.
BUFFALO, N.Y.

The Goldie & McCulloch Co., Limited GALT, ONT.



The St. Mary's Creamery Co., Limited, recently wrote us as follows, speaking of one of our IDEAL Engines:

"WE HAVE ENGINE IN AND RUNNING. IT IS DOING ITS WORK BEAUTIFULLY EASY AND GRACEFUL.

Write us about Pumps, etc.

- WE MAKE
- Wheelock Engines
 - Ideal Engines
 - Gas and Gasoline Engines
 - Boilers
 - Pumps
 - Water-Wheels
 - Flour Mill Machinery
 - Oatmeal Mill Machinery
 - Oatmeal Steam Kilns.
 - Wood-Working Machinery
 - Iron Pulleys
 - Wood Rim Split Pulleys
 - Shafting
 - Hangers
 - Gearing
 - Friction Clutch Pulleys, Etc.
 - Saws
 - Vaults and Vault Doors

- WE MAKE
- Wheelock Engines
 - Ideal Engines
 - Gas and Gasoline Engines
 - Boilers
 - Pumps
 - Water-Wheels
 - Flour Mill Machinery
 - Oatmeal Mill Machinery
 - Oatmeal Steam Kilns
 - Wood-Working Machinery
 - Iron Pulleys
 - Wood Rim Split Pulleys
 - Shafting
 - Hangers
 - Gearing
 - Friction Clutch Pulleys, Etc.
 - Saws
 - Vaults and Vault Doors