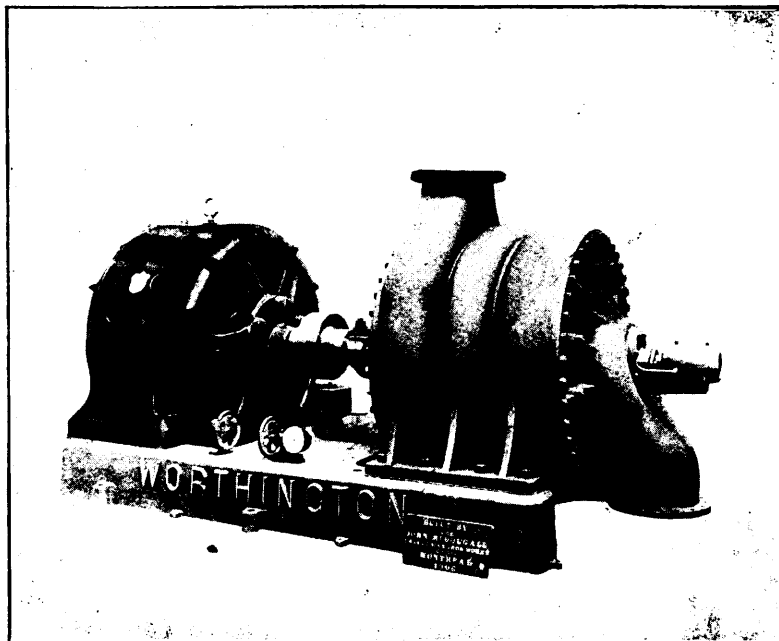


The John McDougall Caledonian Iron Works Co. Ltd.

MONTREAL, P.Q.



14"—3 Stage Worthington Turbine Pump, Capacity 5 million gallons per 24 hrs.

Boilers

All Sizes and all Pressures.
Prompt Delivery.

Tanks

Water Tanks, Penstocks,
Steel Riveted Pipe, Etc.

Forgings

Dredge Teeth, Bucket Arms,
Etc.

Machinery

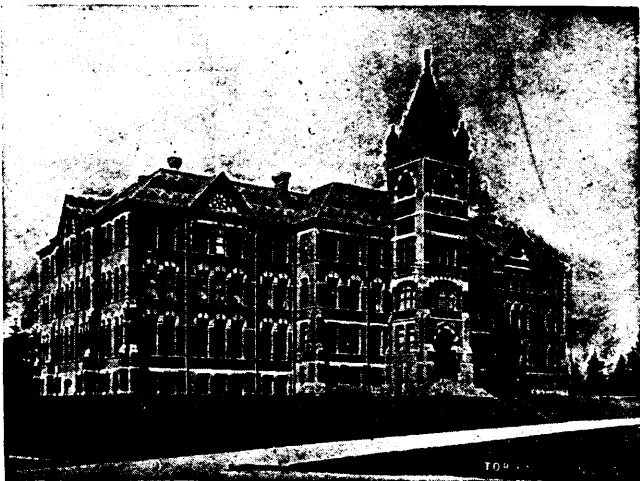
Complete Power Plants built
and installed.

**Sole Manufacturers in Canada for
WORTHINGTON Turbine Pumps and
DOBLE Impulse Water Wheels.**

SCHOOL OF PRACTICAL SCIENCE TORONTO

ESTABLISHED - - - - 1878

The Faculty of Applied Science and Engineering
of the University of Toronto.



DEPARTMENTS OF INSTRUCTION :

- | | |
|--|-------------------------------------|
| 1—Civil Engineering. | 4—Architecture. |
| 2—Mining Engineering. | 5—Analytical and Applied Chemistry. |
| 3—Mechanical and Electrical Engineering. | 6—Chemical Engineering. |

Special attention is directed to the facilities possessed by the school for giving instruction in Mining Engineering.

LABORATORIES :

- | | | | |
|-------------|---------------|------------------|---------------|
| 1—Chemical. | 3—Milling and | 4—Steam. | 6—Electrical. |
| 2—Assaying | Ore Treatment | 5—Meteorological | 7—Testing. |

A Calendar giving full information, and including a list showing the positions held by graduates, sent on application

A. T. LAING, Registrar.

CANADIAN MINING INSTITUTE

Incorporated by Act of Parliament 1898.

AIMS AND OBJECTS.

(A) To promote the Arts and Sciences connected with the economical production of valuable minerals and metals, by means of meetings for the reading and discussion of technical papers, and the subsequent distribution of such information as may be gained through the medium of publications

(B) The establishment of a central reference library and a headquarters for the purpose of this organization.

(C) To take concerted action upon such matters as affect the mining and metallurgical industries of the Dominion of Canada.

(D) To encourage and promote these industries by all lawful and honourable means.

MEMBERSHIP.

MEMBERS shall be persons engaged in the direction and operation of mines and metallurgical works, mining engineers, geologists, metallurgists, or chemists, and such other persons as the Council may see fit to elect.

STUDENT MEMBERS shall include persons who are qualifying themselves for the profession of mining or metallurgical engineering, students in pure and applied science in any technical school in the Dominion, and such other persons, up to the age of 25 years, who shall be engaged as apprentices or assistants in mining, metallurgical or geological work, or who may desire to participate in the benefits of the meetings, library and publications of the Institute. Student members shall be eligible for election as Members after the age of 25 years.

SUBSCRIPTION.

Member's yearly, subscription.....	\$10.00
Student Member's do	2.00

PUBLICATIONS

Vol. I, 1898, 66 pp., out of print	Vol. V, 1902, 700 pp., bound
Vol. II, 1899, 285 pp., bound red cloth	Vol. VI, 1903, 520 pp., bound
Vol. III, 1900, 270 pp., bound red cloth	Vol. VII, 1904, 530 pp., bound
Vol. IV, 1901, 333 pp., bound.	

Membership in the Canadian Mining Institute is open to everyone interested in promoting the profession and industry of mining without qualification or restriction.

Forms of application for membership, and copies of the Journal of the Institute, etc., may be obtained upon application to

H. MORTIMER LAMB, Secretary, Montreal.