

THE CANADIAN CHURCH MAGAZINE

• • AND MISSION NEWS • •

Published for the Domestic and Foreign Missionary Society of the Church of England in Canada.

VOL. IX.

TORONTO, APRIL, 1895.

No. 100.

HISTORICAL SKETCHES

No. 100. CHRIST CHURCH, WINNIPEG.

(Being also No. 106 of "Our Parishes and Churches.")



HE parish of Christ Church, Winnipeg, may be said to have originated in an especial manner with the Church Missionary Society of England. As is generally well known, this society

played a large and important part in building up the Church in Rupert's Land by the establishment of Indian missions over the great Northwest.

When it became pretty certain that Winnipeg would be the centre of trade and government, it was felt desirable that the Church Missionary Society should have its base of operations there, with its local secretary in charge of a church, as in the capitals of the Indian presidencies.

With this end in view the Synod of Rupert's Land, in 1870, adopted the proposal for the erection of the parish of Christ

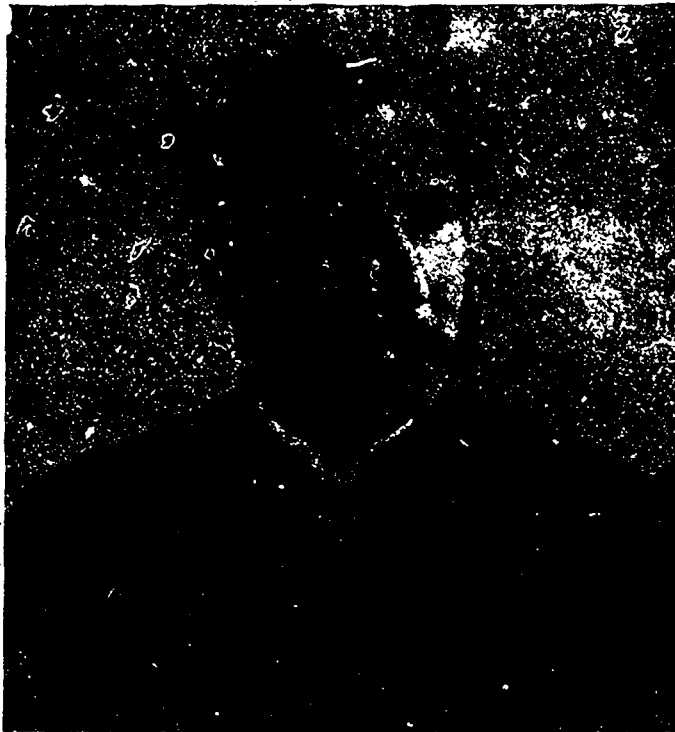
Church, out of the cathedral parish, and giving the appointment of the incumbent to the Church Missionary Society.

Under this arrangement, which, however, ultimately fell through, the present Dean of Rupert's Land, then Canon Grisdale, and secretary of the Church Missionary Society for Rupert's Land, proceeded to erect a small brick building to serve as church and school room.

About a year before this (in 1875) Canon Grisdale opened a Sunday school, followed by

a service, in a very wretched building, on the east side of Main street, between Henry and Logan avenues. It was used during the week as a public school. Its sanitary arrangements were not of the best, and, as it soon became too small, there was great rejoicing at the completion of the new building on Princess street.

The opening services were held on August 13th, 1876, and were conducted by the Bishop, Canon Grisdale, Canon O'Meara, and other clergy.



REV. CANON E. S. W. PENTREATH, B.D.,
Winnipeg, Manitoba.

In 1881, finding the combined duties of his numerous offices too heavy, Canon Grisdale advertised for an assistant, and the Rev. H. T. Leslie, M. A., now immigrant chaplain, came from Ontario to fill the position.

The same year a larger church was found necessary. Funds were raised by the sale of land, subscriptions, and a grant from the Society for Promoting Christian Knowledge, and a new building was erected, which was opened toward the close of the year. The old building was used for Sunday

school and parish purposes, and, having been twice added to, is still so used.

The present rector is the Rev. Canon Pentreath, B.D., formerly rector of St. George's Church, Moncton, N.B., who became incumbent at Easter, 1882. He was appointed Rural Dean of Selkirk in 1887, and the first Honorary Canon of St. John's Cathedral in 1890. In 1883 the parish became a rectory. In the same year a parsonage was built at a cost of \$3,500. Christ Church was the first church in the Northwest to introduce weekly communion,