

Everything for the School Girl and Boy

This week we are specializing in School Clothing and equipment. In our Big Bargain Budget for Friday and Saturday parents are offered special opportunities for outfitting the youngsters for school at prices which show highly satisfactory savings.



SCHOOL CLOTHES FOR BOYS

NORFOLK SUITS—In Mixed Tweeds; to fit boys of 9 to 12 yrs. Reg. \$13.00 suit for... **\$11.75**
CORDEROY SUITS—Belting styles; in Brown cord; 3 pockets; straight knee pants; for boys of 14 and 15 years. Reg. \$16.50 suit for... **\$15.00**
BOYS' SHIRTS—Soft bosomed; white grounds with fancy colored stripes; sizes 12 to 14½; double cuff. Reg. \$1.80 each for... **\$1.50**
BOYS' PANTS—In Grey Tweed; sizes 5 to 7; light and dark shades; lined throughout. Reg. \$6.10 pair for... **\$5.50**
SAILOR SUITS—Fine Navy Serge, for boys of 5 to 9 years; braided collars and lanyard. Reg. \$12.50 suit for... **\$11.20**
WATERPROOFS—Grey S. B. Mackintoshes, with military collar; sizes to fit 11 to 14 yrs. Reg. \$16.50 each for... **\$14.85**

GINGHAM DRESSES FOR GIRLS

GIRLS' DRESSES—Striped and checked designs in Anderson's Gingham. In a variety of pretty styles; to fit girls of 5 to 14 years. Reg. \$3.60 each for... **\$3.00**
 Reg. \$3.90 each for... **\$3.25**
CHILD'S BLOUSE—Navy Blue jersey knit; all sizes from 2 to 12 yrs.; elastic at waist and knee. Reg. \$1.20 pair for... **95c.**
BLACK RUBBER COATS—For girls; well finished in every way. Sizes 30 to 36 inch. Reg. **\$8.10**
 Sizes 38 to 46 inch. Reg. **\$8.60**
 Sizes 48 to 56 inch. Reg. **\$9.80**
GIRLS' OIL HATS—In Fawn and Black; Cape Anne styles. Reg. \$2.40 each for... **\$2.15**

Bargains in Boys' Wear

BOYS' TIES—Assorted colors. Reg. 25c. each for... **20c.**
HANDKERCHIEFS—Colored borders. Special, ea. 5c.
BOYS' BRACES—Adjustable to any size. Reg. 40c. pr. for... **35c.**
SINGLET FRONTS—White Flannel. Reg. 45c. ea. for... **39c.**
RUBBER COLLARS—Rugby; sizes 12 to 13. Special, each... **21c.**

New Ribbon for Hair Bows

TAFFETA RIBBON—3 inches wide; all shades. Reg. 65c. yard for... **56c.**
HAIR RIBBON CLIPS—In Celluloid, Brass and Enamel. Reg. 15c. each for... **12c.**
WOOL SCARFS—10 x 34, fringed ends; all shades. Reg. \$3.30 each for... **\$2.95**
SILK SCARFS—Striped designs, silk fringed; 9 x 48. Reg. \$3.50 each for... **\$3.05**

Household Needs



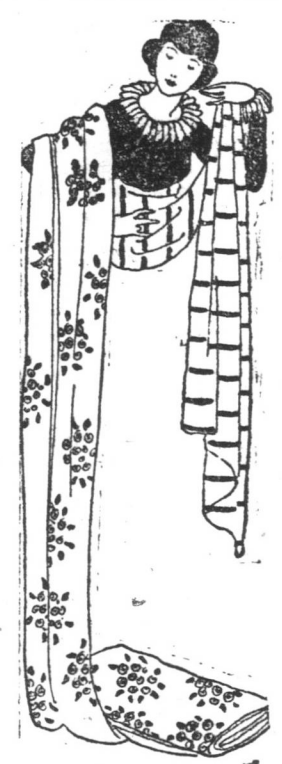
Honeycomb Towels.
 White Cotton, fringed; size 16 x 30; red stripes. Reg. 30c. each for... **26c.**
Turkish Towels.
 Blue Cotton; size 18 x 36; red and brown stripes, fringed ends. Reg. 75c. each for... **64c.**
Large Pillow Cases.
 White Cotton of excellent quality; frilled and plain styles. Regular 80c. each for... **66c.**
Booster Cases.
 White Cotton; sizes 17 x 52; well finished in every way; plain button ends. Reg. \$1.25 each for... **\$1.03**
Corticelli Flossine Wool
 In 1-oz. balls, in a large number of popular colors. Special per ball... **41c.**
Sateen Cushions.
 Assorted Sateen covered Cushions, filled with good cotton batting and finished with neat frills. Reg. \$1.50 each for... **\$1.50**
Leather Purses.
 Black patent leather Hand Purses, fitted with fastener and straps at back. Special each... **46c.**

FOOTWEAR for Boys and Girls

Children's Ribbed Hose.
 Black Cashmere; seamless feet; good dress. Sizes 3 and 4. Reg. values to \$1.05 pair for... **\$1.05**
 Sizes 5 and 6. Reg. values to \$1.20 pair for... **\$1.15**
Tan Cashmere Hose.
 Assorted ribs. Sizes 4 and 5; values to \$1.05 pair for... **83c.**
 Sizes 6 and 7½; values to \$1.55 pair for... **\$1.15**
Women's Hose.
 Heather mixtures; all wool; sizes 9 and 9½ inches. Reg. \$1.70 pr. for... **\$1.52**
Boys' Hose.
 Heavy ribbed Cashmere. Sizes 2 to 4. Reg. values to \$1.10 pr. for... **88c.**
 Sizes 5 to 8. Reg. values to \$1.50 pr. for... **\$1.20**
Girls' Boots.
 Fine quality box calf, mahogany shades with Fawn cloth tops; low heels and good heavy soles. Reg. \$4.00 pair for... **\$3.75**
Boys' Boots.
 Black Gun Metal Bluchers; sizes 1 to 5½; good stout quality. Reg. \$5.80 pair for... **\$5.40**
Youths' Boots.
 20 pairs Black Gun Metal Boots, Blucher cut; sizes 9 to 13. Reg. \$5.75 pair for... **\$5.38**

Materials for School Wear

Colored Serges of good serviceable weight; ideal for school dresses, in shades of Navy, Russian Blue, Sage, Myrtle, Saxe, Brown and Grey; 38 inches wide. Reg. \$2.55 yard for... **\$2.17**
Gabardine.
 A good strong serviceable material for fall dresses, in shades of Navy, Saxe, Prune, Brown, Grey and Black; 40 inches wide. Regular \$3.15 yard for... **\$2.68**
Velveteen.
 New arrival; 40 pieces new Velveteens, 21 inches wide; shades of Brown, Navy, Tobac, Cardinal, Ruby, Myrtle, Black and White; silk finished. Reg. \$2.00 yard for... **\$1.66**
Colored Jap Silk.
 36 inches wide; colors of Fawn, Brown, Amethyst, Maize, Saxe, Navy, Grey, Sky, Pink, V'rose, Cardinal, Reseda, Bot-green and Apricot; soft, beautiful finish. Reg. \$2.60 yard for... **\$2.15**
All Silk Paillettes.
 34 inches wide; shades of Rose, Sky, Green, Grey, Navy, Brown and Mole. Reg. \$3.75 yard for... **\$2.98**
School Bags.
 Stout check canvas; sizes 12 inches, bound in leather, shoulder straps and handles of good leather. Regular 75c. each for... **65c.**



Ladies' Umbrellas.
 5 dozen only high grade Umbrellas fitted with stout 8 rib frames, wood and steel rods, black gloriole covering and a variety of straight and bent fancy handles. Reg. \$3.25 each for... **\$2.82**

Blouses, Sweaters and Dressing Gowns

Georgette Blouses.
 Of most attractive designs are offered here, in shades of Maize, Grey and Sand; assorted pretty styles; sizes 34 to 44. Reg. \$14.00 each for... **\$12.00**
Middy Blouses.
 White Jean, bodies with Saxe Blue collar and pocket; sizes 36 to 40, laced up fronts. Reg. \$3.50 each for... **\$3.02**
Wool Sports Coats.
 Practical garments in Turquoise and Saxe, roll collars, finished with belt and pocket; sizes 36 to 42. Reg. \$7.00 each for... **\$6.35**
Pull-Over Sweaters.
 In Nile, Emerald, Rose, Sky, Pink and Lavender; all wool, V neck, trimmed with white, sleeveless; sizes 36 to 42. Reg. \$5.00 each for... **\$4.40**
Maid's Aprons.
 Made of stout White Lawn, neatly embroidered styles with wide shoulder straps, bibs and wide hem. Reg. \$1.25 each for... **98c.**
Maid's Caps.
 White Organdi Muslin, with draw string at back, very smart shapes. Reg. 35c. each for... **30c.**
Bonnet Fronts.
 White Silk, trimmed with lace, etc. Special 20c. each for... **20c.**
Dressing Gowns.
 Brand new models in fancy floral dannalette; sizes 34 to 44; colors of Blue, Pink, Lavender and Saxe; fitted at waist, kimono sleeves, sleeves and collar finished with sateen facings of contrasting shades. Regular \$2.75 each for... **\$2.35**
Moire Underskirts.
 Well cut styles in shades of Wine, Nigger, Saxe and Black, shaped band at waist, accordion and space pleated flounces; in women's sizes only. Regular \$2.25 for... **\$1.92**
Sateen Underskirts.
 Shades of Royal, Rose and Lt. Grey, elastic band at waist; finished with wide flounce. Reg. \$2.75 each for... **\$2.25**
Jersey Ribbed Vests.
 Of medium weight; sizes 36 to 38, white, two styles—V and round neck; all have long sleeves. Reg. \$1.90 each for... **\$1.57**
Ladies' Corsets.
 Strong White Coutil; sizes 21 to 30 inches; low and medium bust, four suspenders. Reg. \$2.60 pair for... **\$2.40**
White Embroidery.
 Fine patterns of Swiss manufacture, on White Lawn, 1½ inches wide. Special 8c. per yard... **8c.**

HANDKERCHIEFS



Printed Mull Handkerchiefs.
 Medium size, White with Colored borders; assorted designs. Reg. 25c. each for... **20c.**
Excelsa Handkerchiefs.
 Soft Silk finished Handkerchiefs with embroidered initials in corners. Reg. 60c. each for... **52c.**
Lace and Muslin Neckwear.
 50 only dainty White Collars in different pretty styles, also a quantity in Cold' Georgette. Reg. 65c. ea. for... **55c.**
Child's Belts.
 Strong serviceable Belts in Black, White and Crimson, enamel finish, large buckles; to wear with child's dresses. Reg. 20c. ea. for... **16c.**

You can save a lot on FLOOR COVERINGS, etc.

Hearth Rugs.
 Velvet Pile Rugs, size 27 x 50; handsome oriental designs and wool fringed ends. Regular \$7.25 each for... **\$6.50**
Floral Tapestry.
 For window drapes and portiers, 50 inches wide; designs in Light Fawn and Green color contrasts. Reg. \$4.50 yard for... **\$4.15**
Curtain Scrims.
 In White and Cream, 34 inches wide; imitation flit lace borders. Special, per yard... **25c.**
Turkish Toweling.
 Heavy quality Fawn Toweling with white stripes; 15 inches wide; soft finish. Reg. 55c. yard for... **50c.**
Congoleum Squares.
 Handsome oriental and tile designs in Red, Green and Grey; size 6 x 9. Reg. \$10.00 ea. for... **\$9.25**
"Feltex" Floor Covering.
 The popular substitute for linoleum; 2 yards wide, in plain Browns and Greens, also in check, diamond and other designs in assorted colors. Special, per yard... **\$1.85**
American Flannelette.
 Extra special values, white grounds with colored stripes and checks; soft finish, free from dressing; 27 ins. wide. Special, per yard... **38c.**
English Apron Checks.
 In handsome Blue & White check designs; 44 ins. wide; smooth linen finish. Reg. 90c. yard for... **84c.**

The New Fall Hats at Sale Prices



Men's Velour Hats.
 Smart new styles in shades of Navy, Grey, Bronze, Brown and Fawn, lined with satin; sizes 6½ to 7½; wide roll brims. Reg. 14.00 each for... **\$12.25**

Men's Felt Hats.
 Soft quality Hats with a smooth finish; the latest shapes for fall in shades of Grey, Green and Brown; sizes 6½ to 7½; wide brim-bound rims, silk lining and leather sweat bands. Reg. \$11.50 each for... **\$10.05**
Boys' Tweed Hats.
 In Navy, Green and Grey mixtures, roll rims; sizes 6½ to 6¾. Reg. \$1.65 each for... **\$1.35**
Boys' School Caps.
 In Navy Serge, sizes 6½ to 6¾; the popular Bton shape. Reg. \$1.10 ea. for... **90c.**
Boys' Sweater Coats.
 With two pockets; shades of Brown and Maroon; storm collars. Reg. \$2.60 each for... **\$2.20**
Pull-Overs.
 For boys, in Saxe Blue; buttoned at shoulder; size 28 in. chest only. Reg. \$1.60 each for... **\$1.35**

Smallware Section

Toilet Goods.
 Ladies' Dressing Combs. Reg. 50c. each for... **40c.**
 Ivory Nail Brushes. Reg. \$1.35 each for... **\$1.15**
 Metal Cash Boxes. Reg. 60c. each for... **50c.**
 Toilet Soap, Cologne Bouquet; 3 cakes in box. Reg. 65c. box for... **55c.**
 Talcum Powder, Men's. Reg. 30c. tin for... **27c.**
 Jap Rose Cold Cream. Reg. 50c. tube for... **35c.**
 Shampoo Cream. Reg. 50c. tube for... **45c.**
 Bronze Waste Paper Baskets. Reg. \$5.00 each for... **\$4.50**
 Newspaper Wrappers, books of 25. Special, per book... **18c.**
 Shaving Brushes, ebony handles. Reg. 45c. each for... **38c.**
 Slate Pencils, wood covered. Special, each... **3c.**
 Lead Pencils, plain. Special, each... **4c.**
 Pocket Pencils, with Protectors, c. Special, each... **13c.**
 Steel Pen Nibs, asstd.; per doz. ... **6c.**
 Penholders, complete with nib, each... **3c.**
 Penholders, complete with nib, each... **7c.**
 Ink and Lead Erasers, each... **5c.**
 Rulers, each 3c. and 13c.
 Exercise Books. Special, each 10c. & 14c.

The Royal Stores, Ltd.

America Had Biggest Animals.

Stealing a dinosaur sounds about as feasible as walking off with the Brooklyn Bridge, but despatches from Buenos Ayres tell of an expedition recently sent to Patagonia to study a mammoth specimen discovered a year ago, and found it missing. "To-day we must go to Africa for the biggest game, but there was a time in the dim, distant past, when America produced animals larger than any now living," says a communication to the National Geographic Society by Barnum Brown.

"That was so long ago that nothing remains of these creatures except their bones, and they are turned to stone. Hidden away under strata of earth, their spoor has long since grown cold. "The animals are dinosaurs; for the moment we will call them lizards—not the creeping crawling kind, but huge reptiles that stalked upright through the jungles, rivaling in size the elephant, the hippopotamus, and the rhinoceros. "In the marshes of prehistoric

times dwelt a host of reptiles, some large, some small, and of various forms, flesh eaters and herb eaters, but all sharing certain characters in common and known as dinosaurs. Not any were closely related to any living reptile, yet they had some characters common to the lizards, crocodiles, and birds. "Of the kinds characteristic of the period one species, a herb eater named Trachodon, was more than thirty feet long and about fifteen feet high when standing erect. Its head, with broadly expanded mouth, resembled that of a duck, but back of the beak

there were more than two thousand small teeth, disposed in many vertical rows, each containing several individual teeth, the new ones coming up from below as the old ones wore out. "The long hind feet were partially webbed. A long, thin, slender tail acted as a powerful swimming organ, and the body was covered with rough tuberculate skin. Having no means of defense, it lived chiefly in the water, where it was free from attacks of the flesh eaters. "With the 'duck-billed' Trachodon

there were other large closely related forms inhabiting the water. Saurolophus was similar in build, but characterized by a large crest extending above the skull, and pelvic bones that were developed for attachment of powerful tail muscles. It was probably a distinctly aquatic type. "Along the shores lived Ornithomimus, the bird mimic, as the name implies, one of the most remarkable of the dinosaurs. A skeleton found last year shows it to have been a toothless creature, the jaws sheathed like the beak of a bird."

A Royal Compliment.

"At Sandringham the late King Edward raised prize swine, prize bullocks, and all manner of fancy livestock. There was a fashionable West-end butcher who bought all the King's fat swine every year at a simply enormous price, and a reporter said to this butcher one day: "How can you afford to pay such prices for the royal swine?" "Well, you see," said the butcher, with a wink of the eye, "the King's pigs have such a lot of legs!"

Supreme Court

IN ADMIRALTY.
 N. S. Furneaux, owner of the schooner "Lady St. John's" plaintiff vs. the schooner "Harold Conrad" defendant.
 Action in rem. Cause of collision. Reasons of Mr. Justice Johnson, for his finding in favour of the plaintiff.

In the issues joined, each party attributed the collision to the other's improper navigation; the defence alleging in particular that the plaintiff erred in starboarding, and neglected to sound his horn. After the evidence on both sides had been closed, the defence asked leave to add a plea that the collision was inevitable by reason of foggy weather. I refused leave chiefly because that defence if intended should have been filed earlier, and because nothing had transpired in the evidence to warrant it. Moreover such a plea would have been inconsistent with the speed of the "Conrad" running free under full sail.

The Article of the Regulations for Preventing Collisions at Sea most relevant in the present case is that which casts duty on a vessel with wind sport and sailing free of keeping out of the way of a vessel close-hauled (as the "St. John's" was) on the starboard tack; and duty on the latter to keep her course. Six witnesses were called for the plaintiff of whom three were the watch on deck, namely, Captain Milson, Hewitt lookout and attending to the horn, and Holmes, wheelman. The defence called ten witnesses three of whom were her watch on deck, namely Conrad, lookout, Lemuel Zinc, lookout and attending to the horn, and James Zinc at the wheel. Four of the remaining witnesses were not on board either vessel.

The following leading facts were not in dispute; that the collision occurred a little before midnight of 9 July about fifty miles S.E. of Cape Race, where tide is not an element; that the wind was west, a moderate breeze; that the water was neither rough nor smooth; and weather foggy. The "St. John's" course was S.W.W., closehauled on the starboard tack; the "Conrad" N. by E, sailing free with wind a point abaft her port beam. I find that the lights of both vessels were burning brightly and that their horns were duly sounded. The speed of the "St. John's" was 3 1/4 knots. The evidence leads me to believe that the "Conrad" was making about eight knots, the vessels approaching each other on courses one point from opposite at the rate of say 378 yards per minute.

The plaintiff's watch are at one in deposing that when they first saw the "Conrad's" green light it was about half a mile distant a point on their starboard bow. I take this as established, there being no evidence to the contrary. For the same reason I find that Captain Milson kept his S.W.W. course (as was his duty) from the moment when the green light was seen until an appreciable time after the "Conrad" showed her red light almost ahead, when the vessels were close aboard of each other and it was clear that collision was inevitable. He then put his helm hard a port in order, by lessening his way, to reduce the weight of the collision while at the same time attempting to bring the impact at a less dangerous angle. I justify this manoeuvre, in the circumstances of the moment, and think to have acted otherwise would have been unseamanlike and blameworthy.

The evidence of Willis Moesman, one of the "Conrad's" crew called for the defence, leaves no doubt that the "St. John's" kept her course as alleged by the plaintiff's witnesses. He says that just after he reached the deck by the fore-castle, the "St. John's" square topsail, then close ahead and at an angle of 30 or 40 degrees over where he stood, was yet full of wind, which means that the "St. John's" had not ported so far. Commenting on this evidence so helpful to the plaintiff, defendant's counsel suggested that she may have starboarded after seeing the Conrad's green light. But, besides the plaintiff's witnesses, two axioms require such a theory, namely, (a) while the "St. John's" had green to green, she had no cause to break the rules by starboarding, and (b) that if she had fallen away at all within that two minutes, the vessels could not have met port to port as they did. I am convinced that the "Conrad" was sailing both free and large, because she had the "St. John's" red light before she put her helm up, and could not have reached to leeward of the latter's course without some previous falling away.

The "St. John's" was on a voyage from Trinity Bay to Cape Breton, and with the wind west might be expected to be closehauled while on the starboard tack. The "Conrad's" watch agrees that the "St. John's" red light was the first they saw, and that it was about one hundred and fifty yards distant. Willis Moesman puts the "St. John's" 56 yards away when he saw her red light and noticed that her square-top-sail had not yet begun to lift. The "Conrad's" helm was put hard-up as soon as the "St. John's" red light was seen. From these premises I conclude that about 60 seconds elapsed between the sighting of the "Conrad's" green by the "St. John's" and the sighting of the "St. John's" red by the "Conrad."

I am satisfied that the evidence on both sides was truthful; their statements are reconcilable, for on the courses they were steering there is nothing inconsistent between their positions when the green light was first seen on the "St. John's" starboard bow and that when, (the "Conrad" having fallen off to say N.E. and the "St. John's" having luffed perhaps to S.W.) the "Conrad" lifted the "St. John's" port anchor in the act of colliding.

The master of the "St. John's" had prudently reduced sail about sunset and was under reefed foresail, reefed mainsail, jumbo, standing jib, boom jib, and lower square topsail. The collision could have been avoided by the "Conrad" if her watch had seen the "St. John's" green light when they should have seen it, six or seven hundred yards distant on their starboard bow. A little luffing would then have sufficed, rather than falling off. I therefore find against the "Conrad" with costs. I acquit the "St. John's" entirely. It is referred to the Registrar to take evidence and report as to the plaintiff's damages. Mr. Foote for the plaintiff. Mr. McNelly for the defendant.