

## TORONTO, QUEEN CITY OF THE DOMINION.

**Picturesque, Prosperous,  
Progressive.**

The Capital of Ontario developing her Industries and Manufactures while preserving the delightful privacy of her beautiful residential districts.

Beautifully situated on the north shore of Lake Ontario, Toronto, the capital of Ontario Province, and renowned as the Queen City of the Dominion, possesses a population of upward of quarter of a million, and is the second largest city in Canada. Toronto was formerly called York, when the original city was created in 1793. In 1834 the city was incorporated under the name of Toronto, and three years later in 1837, when the federation of the provinces was completed, she became the capital of Ontario, and from that time her growth has been rapid, and her commerce has increased by leaps and bounds.

Rising gradually from the water's edge to an elevation of over one hundred feet above the level of the lake, Toronto is laid out on the principle of modern American cities. The two main arteries of the city are Yonge and King Streets which cross each other at right angles. All the streets are broad and well paved, and in the residential sections they give way to boulevards lined with beautiful trees, and the houses standing well back from the thoroughfares, are fronted and in most cases surrounded with well kept lawns and gardens.

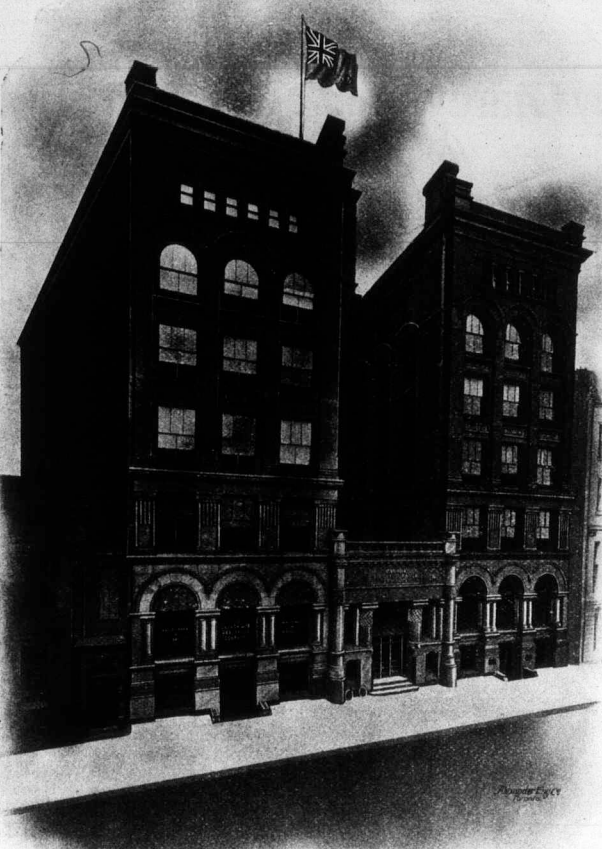
It is essentially a city of homes, which alone makes Toronto a most attractive place for residents, and in addition its picturesque parks, beautiful churches, colleges, and fine public buildings, render it a most attractive place for the visitor. In summer the climate is mild and agreeable owing a great deal to its situation on the lake. It therefore proves a highly attractive summer resort, the island and lake shores being filled with summer cottages and residences. Yachting, boating, horse-racing, driving, and fishing are freely indulged in and sports of every description are plentiful.

Toronto may well be proud of her beautiful churches, St. James' Cathedral, St. Michael's Cathedral, the Metropolitan (Methodist) Church, Jarvis Street Baptist Church, the St. Andrews' and Knox Presbyterian churches may be mentioned as fine specimens of architecture.

The Provincial Parliament buildings at the southern end of Queen's Park is a magnificent pile and was erected at a cost of \$1,250,000. It has a frontage of four hundred and thirty-five feet, with a depth of two hundred and sixty, and from its towers magnificent views of the city are obtainable. In the western part of the park, stands the famous Toronto University, a superb group of noble buildings, in the Norman style of architecture. The University was founded under a royal charter in 1827, and has an endowment of \$1,800,000. Other fine and interesting buildings are Osgoode Hall, where the highest courts of the province are held; the University of Trinity College; Victoria University, and McMaster University.

The Municipal buildings are splendid specimens of modern architecture, the City Hall and Court House being one of the finest in Canada, having been erected at a cost of \$3,000,000. The Custom House, Board of Trade, the great insurance and banking buildings, the great Temple Building erected by the Independent Order of Foresters, the splendid stores, modern and up-to-date, all strike the eye of the visitor. In fact Toronto is a modern, bright, up-to-date, cleanly and go ahead city, and has an air of newness which is a welcome change from the older Canadian cities, for if without the ancient historical attractions of the latter, yet modern comforts and conveniences are not to be despised. The natural attractions of Toronto and vicinity, rival those of any city on the continent.

As a manufacturing centre Toronto is growing as rapidly as her rival Canadian cities. Her plants have nearly all been erected in recent years, and are equipped with all the latest machinery of the most modern type. The Toronto manufacturers are always on the *qui vive* to outlive their neighbours across the lake in keeping their plants right up to date in every respect. One great future of the factories in Toronto is the perfect cleanliness of their surroundings. Instead of grimy and dirty exteriors, one finds creepers, flowers and little lawns and gardens. The interiors are also kept as bright and



THE CANADA LIFE'S HEAD OFFICE BUILDING  
TORONTO.

**The Canada Life** enjoys the unique distinction of holding the strongest Policy Reserves of any old established life office on this continent.

### Chijap Floor Lac

**DRIES AS HARD AS FLINT,  
SHINES LIKE A MIRROR,  
IS FREE FROM SLIPPERINESS &  
WILL NOT CHIP OFF.**

In Oak, Cherry, Mahogany, Rosewood, Walnut and Bog Green transparent stains. Ivory, Drab, Yellow and Maroon solid colours. The fact of its being made to withstand floor wear makes it particularly well adapted for doing over any old piece of furniture, and makes it look like new and retain such appearance for a remarkable length of time.

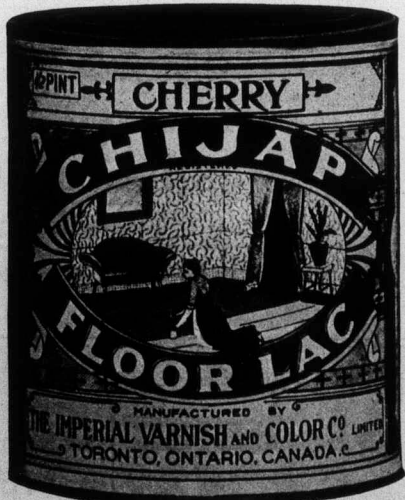
A sample tin mailed absolutely free of charge to anyone for the asking.

Ask your dealer for it.

Manufactured only by

**The Imperial Varnish &  
Color Company Limited,**

TORONTO, ONTARIO, CANADA.



(Continued on page 12.)

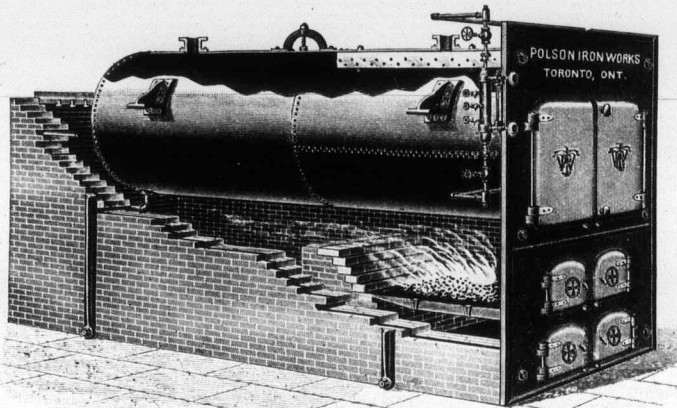
## Polson Iron Works, Limited.

TORONTO, CANADA.

**Steel Shipbuilders, Engineers**

—AND—

**BOILERMAKERS.**



STANDARD TUBULAR STATIONARY BOILER.

### ENGINES

MARINE.—Simple, Compound, Triple Expansion.  
STATIONARY.—Vertical, Slide Valve, High Speed, Automatic and Hoisting.

### BOILERS

MARINE.—Vertical, Submerged Tube, Tug, Locomotive, Scotch, Water Tube, Navy Types.  
STATIONARY.—Vertical, Horizontal Tubular, Water Tubes.

### TANKS

Tank Work of all kinds a Specialty.

### DREDGES

Hydraulic, Dipper Types all sizes.

### STEEL

Yachts, Tugs, Vessels up to full canal size.

**WRITE FOR PRICES BEFORE ORDERING.**

**WORKS AND OFFICE, - - ESPLANADE EAST.**

Commenced Business, 1875.

## THE Boiler Inspection & Insurance Company OF CANADA, Consulting Engineers.

CANADA LIFE BUILDING, - - - - - TORONTO.

JOHN L. BLAIKIE, . . . . . President. GEO. C. ROBB, . . . . . Chief Engineer.  
E. WALTER RATHBUN, Vice-President. H. N. ROBERTS, . . . . . Secretary.

### INSPECTORS.

|                                    |                             |                                    |
|------------------------------------|-----------------------------|------------------------------------|
| O. P. ST. JOHN, . . . . . Toronto. | OLAF E. GRANBERG, . . . . . | A. GEORGES CHAMPAGNE, . . . . .    |
| F. W. DONALDSON, . . . . .         | Chief Inspector, P. Q.      | Montreal.                          |
| A. E. EDKINS, . . . . .            | Board of Trade Building,    | G. LEONARD MORRISON, . . . . .     |
| GEO. FOWLER, . . . . .             | Montreal.                   | Montreal.                          |
| A. P. ROBB, . . . . .              | A. M. BONNYMAN, . . . . .   | ROBERT E. POWER, . . . . .         |
| ROGER FISHLEIGH, . . . . .         | Amherst, N. S.              | J. E. C. BOYCE, . . . . . Toronto. |

The Boiler Inspection & Insurance Company issue a boiler policy that is absolutely free from any technicality or ambiguous clauses, and that states clearly the Insurance benefits that accrue to a policy-holder in the event of a boiler explosion.

A Policy in The Boiler Inspection & Insurance Company insures against such immediate loss or damage by the explosion of Steam Boilers TO PROPERTY OF EVERY KIND ON THE PREMISES whether it is your own property or the property of others for which you would be liable.

It also insures without any additional charge against loss of life or injury to person of the Engineer and Firemen in charge of your boilers, and payable to you for the benefit of the injured persons, or their legal representatives in case of death. This is additional to the Insurance on property.

Insured Boilers are regularly inspected by thoroughly competent inspectors, reports on their condition sent to owners by the Company's Chief Engineer, who is at all times glad to advise (free of charge) those insured with this Company, regarding any matters whatever in connection with their steam plants. These services are based on an experience of Thirty years in this business.

Specifications for boilers or engines supplied. Steam Engines indicated.

Boilers tested, both for strength and for evaporative capacity.

Plans furnished for brick setting suitable for all classes of fuel.

All Free of Charge to Policy-Holders.

We can furnish References as to the value of the Engineering services we have rendered and as to the prompt payment of losses.