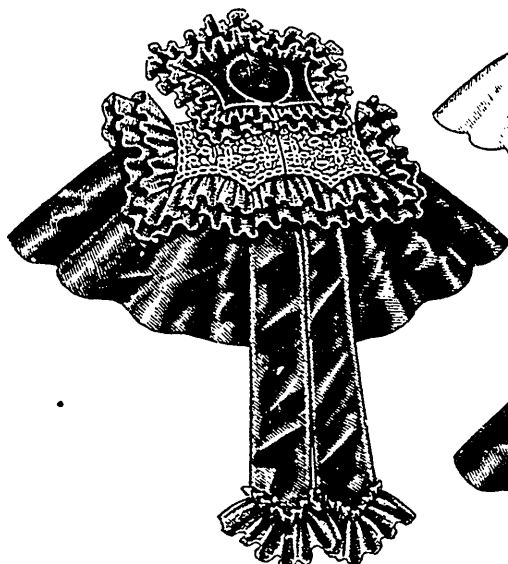


nation. The shirt-waist may be made with or without a fitted lining that is closed at the center of the front. The back has gathered fulness at the waist but is smooth at the top and a

closed with link buttons are made of the piqué and so is the removable collar, which is in turn-down style with oddly-shaped flaring ends. The belt is closed with a buckle.

The waist is appropriate for silks and woolsens and also wash goods with some suitable contrasting material for the lapel facings and vest. The cuffs and collar will often be of linen.

We have pattern No. 9380 in nine sizes for ladies from thirty to forty-six inches, bust measure. To make the shirt waist, except the collar and cuffs, for a lady of medium size, needs four yards and three-eighths of silk twenty inches wide, with five-eighths of a yard of piqué twenty-seven inches wide, and the collars and cuffs need five-eighths of a yard thirty-six inches wide. Price of pattern, 1s. or 25 cents.



9377

Front View.

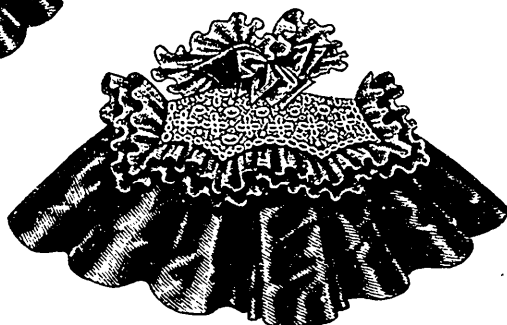


9377

Back View.

LADIES' CAPE. (TO BE MADE WITH TAN FRONTS OR SHORT POINTED FRONTS.)

(For Description see Page 383.)



9377

Back View.

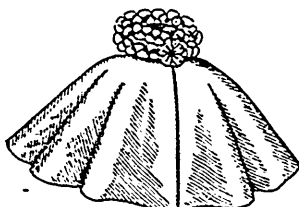
LADIES' SHIRT-WAIST, HAVING A POUCH FRONT AND REMOVABLE COLLARS AND CLOSING AT THE LEFT SIDE. (TO BE MADE WITH OR WITHOUT FITTED LINING.) KNOWN AS THE RUSSIAN SHIRT-WAIST. (For Illustrations see Page 393.)

No. 9392.—This shirt-waist is pic-

yoke that is curved at its lower edge to form two points is applied on it. Under-arm gores separate the back from the fronts, which are also smooth at the top and have fulness below drawn in gathers at the waist. The fronts are turned back all the way down in handsome notched lapels, revealing a shield or vest that is tapered toward the waist and laid in a box-plait at the center. One side of the vest is sewed to the lining while the other side is secured with hooks and loops; studs decorate the box-plait prettily. The one-seam shirt-sleeves are gathered at the top and bottom and finished with wristbands

tured in a different development at figure No. 159 B in this number of THE DELINEATOR.

The Russian closing and pouch front are attractive features of this beautiful shirt-waist, which is known as the Russian shirt-waist. It is here pictured made of silk, with white linen for the two styles of collars. The back is perfectly smooth at the sides but has fulness at the center collected in gathers at the top and at the waist; its upper part is a bias pointed yoke made with a center seam. The left front is narrow and the right front wide to bring the closing which is made with buttons

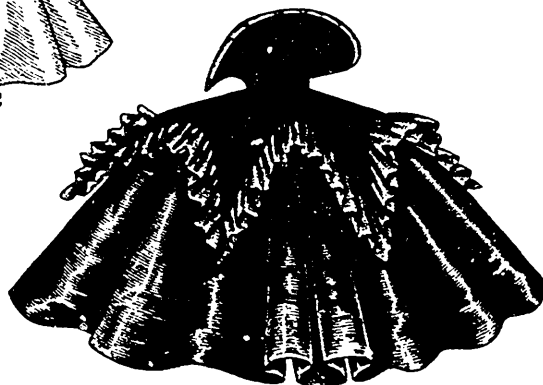


9382



9382

Front View.



9382

Back View.

LADIES' CAPE, WITH TWO BOX-PLAITS AT THE BACK. (TO BE MADE WITH OR WITHOUT THE FANCY COLLAR AND WITH A MEDICI COLLAR OR A PLAIN STANDING COLLAR WITH RUCHE.)

(For Description see Page 384.)

that are closed below slashes finished in the usual way with underlaps and pointed overlaps. Removable turn-up cuffs

and button-holes, at the left side in Russian style. The right front has fulness at the center collected in gathers at the