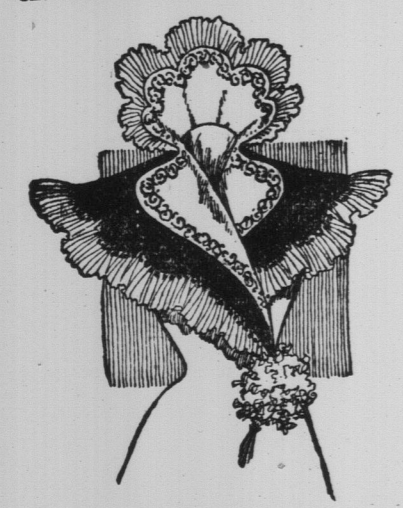


VARIOUS NOTES.

The Rule of Courtesy in Receiving Gifts. One important rule of politeness is often ignored by persons who are otherwise well bred. It concerns the reception of presents.



CORSAGE DECORATION.

Decor. The gift should be immediately examined, its merits praised and the giver thanked. That is the courteous return to make for the present.

Increasing Tendency Toward Tight and Changing Styles. The tendency toward clinging styles is so pronounced that there is a prospect of the return of the old sheath suit.



YOUNG GIRL'S GOWN.

Young girl's gown. The dress is now almost straight in front from the bust to the point of the bodice. This is not a graceful form, however, but is on the contrary, so stiff and unyielding that it is doubtful if even the most infatuated followers of the mode will consent to be straitjacketed in such a manner.

CHILDREN'S FASHIONS.

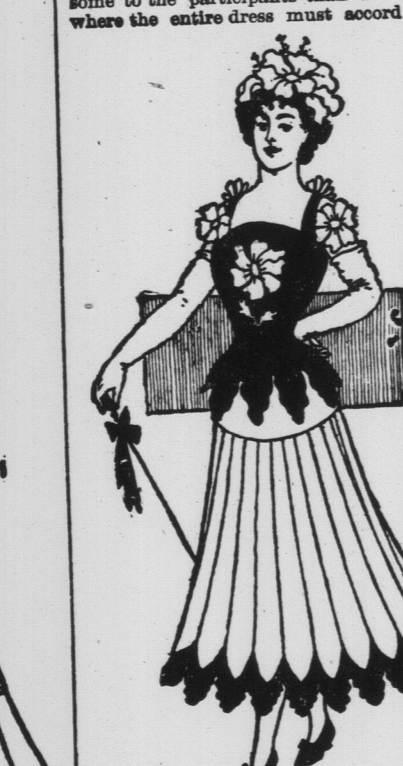
Suitable and Pretty Clothing For Little People. Very little children, both boys and girls, are usually dressed in Mother Hubbard gowns, as this style allows perfect freedom of movement.



GIRL'S CORSET.

Girl's corset. The same form is used for cloaks, which are composed of plush, melleasse, velvet, cloth or eider down, or of the same material and color as the frock.

Fancy Dress Entertainments of Various Kinds. Now is the season of fancy balls, when hostesses vie with each other in planning brilliant entertainments.



FANCY COSTUME.

Fancy costume. The character chosen. At a dinner the upper part of the figure is the only part in evidence, and the guests are often very ingenious in contriving to represent romantically or allegorically character.

STREET COSTUMES.

Fur, Velvet and Cloth For Out of Door Gowns. Fur being more and more fashionable, many of the most elegant gowns are largely composed of it, or at least have fur trimming.



PRINCESS GOWN.

Princess gown. Fur is the principal decoration—black or white mousline, beaver heavily lined. Fur is the principal decoration—black or white mousline, beaver heavily lined.

Various Notes. The increasing favor enjoyed by flannel shirt waists has been the means of the production of some very attractive styles in French flannels.



EVENING GOWN.

Evening gown. Use should be lined with thin flannel or flannelette or should be worn over a warm underpetticoat. Petticoats for wear with ball gowns are of exceedingly light material and are most frequently trimmed with mousline de soie with insertions of silk or satin.

DAINGEROUS PLANTS.

WELL-KNOWN COMMON PLANTS THAT ARE POISONOUS.

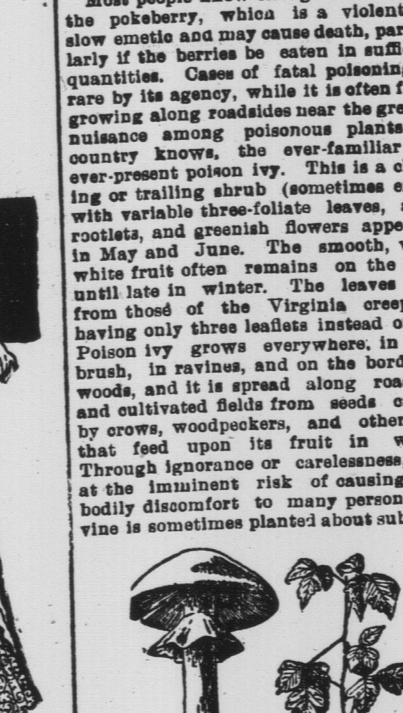
The list of a recent Bulletin of the United States Department of Agriculture is so far as it concerns the Dominion of Canada—Six Illustrations of These to Be Avoided.

Thirty of the most common to North America of the poisonous plants deadly or annoying to animals and man have been described and illustrated in a recent bulletin of the United States Department of Agriculture.



POKE WOOD.

Poke wood. These features are well pronounced as a rule, but sometimes it requires some searching to find the cup. The fyananilla grows in pine and oak forests and hence is thus distinguished from the common meadow mushroom.



DEATH-CUP.

Death-cup. The symptoms in man are such as are due to a general and gradual weakening of muscular power. The power of sight is often lost, but the mind usually remains clear until death ensues, as it soon does from the gradual paralysis of the lungs.

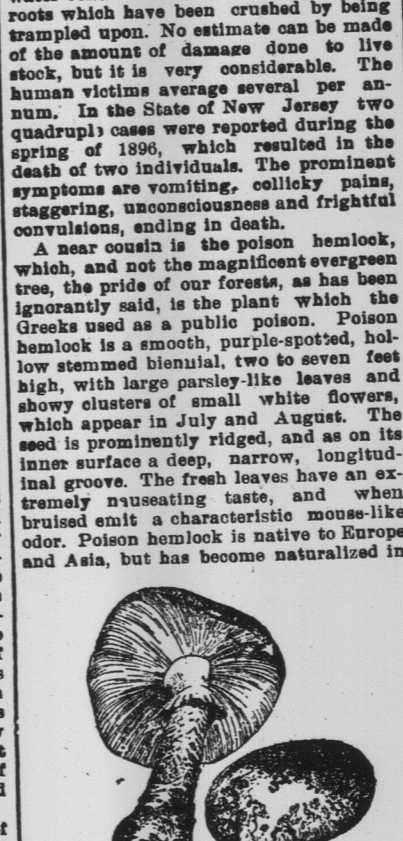
THE FARMERS' MARKET.

Prof. Robertson, in a Recent Toronto Lecture, Holds the Extension Work Right Along in Novel Fashion. Fully 800 women met in the theatre of the Normal School, Toronto, the other day to hear Prof. Robertson of Ottawa lecture on "Food."



WATER HEMLOCK.

Water hemlock. The symptoms in man are such as are due to a general and gradual weakening of muscular power. The power of sight is often lost, but the mind usually remains clear until death ensues.



FLY FUNGUS.

Fly fungus. Canada and the United States. It is common on wayides and in waste places in New York, West Virginia, Pennsylvania, New Jersey and Ohio, and not rare in the New England States and southern Quebec and Ontario.

Read Drainage That Drains. One authority on the subject of road draining claims that in prairie soil a good road can be obtained for 11 months in the year by simply putting in a good system of tile drainage.

THE FARMERS' MARKET.

Prof. Robertson, in a Recent Toronto Lecture, Holds the Extension Work Right Along in Novel Fashion. Fully 800 women met in the theatre of the Normal School, Toronto, the other day to hear Prof. Robertson of Ottawa lecture on "Food."

Water was the vehicle of the body for carrying foods around. Albuminoids, fats, carbohydrates and minerals composed the body, and foods containing these should be used. Food must contain a sufficient proportion of albuminoids, which in a body weighing 145 pounds made up 90 pounds.

Standard food was one in which the proper nutritive ratio was one of albuminoids, one of fats and five of carbohydrates. Oatmeal was the nearest approach to a standard food, but in making it, the oatmeal should be dropped into boiling water and left there for one hour without stirring.

Milk was a good food. Butter is good brain food. Beans and pork make a happy combination. The rice of China would make large but useless people. Rice pudding, quadruple cream, was a delicious manufacturer of ill-temper. Sugar was merely a heater. Beef and potatoes made a well-balanced food. The cheap cuts of beef, well cooked—in a low temperature for a long time—gave more nourishment than the best cuts.

Milk is all digestible. It was well balanced, supplied the nervous system and the bones, and gave something that no other food seemed to give. In general, there was more unspoken wisdom than had food than all the blarney spoken. Fruit and nuts had a bland influence on the digestive organs.

Milk is a Good Bacterial Foodstuff—Moisture an Important Factor. Milk is an excellent food material not only for these forms but for many other species of bacteria which may happen to get into the milk from variable sources. The 1897 report of Prof. Robertson. Let some of these species get in and produce their peculiar changes and we will often find as the result, not the usual souring or curdling, but such changes as bitterness, sliminess, gassy or off-flavored milks, or even colored milk.