

Saturday Afternoon

Union
and
Main
Street
StoresShoe
Bargains!Union
and
Main
Street
Stores

On Saturday afternoon at two o'clock we shall place on sale at our Union and Main Street Stores, Women's \$3.00 and \$3.50 Patent Button Boots, cloth and kid tops; sizes from 2 1/2 to 5, \$1.98 a pair.

Be on hand early, as the lot will not take long to clear out at this price.

Waterbury & Rising, Limited

King Street : Union Street : Main Street

Supreme Among Gems

"The Diamond"

of all gems, is the most lasting, most beautiful, most widely and universally popular.

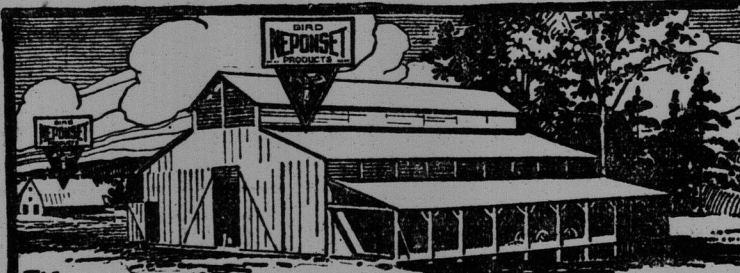
Think of all the pleasure and satisfaction that will follow your investment in a Diamond of fine quality, now. Our prices are the lowest possible, and our settings of the choicest.

Ferguson & Page

Diamond Importers and Jewelers
King Street

The Smooth Texture and Rich Flavor of G. B. Chocolate Coatings As Well As The Great Variety of Delicious Centres Will Appeal to Your Customers. ORDER NOW!

EMERY BROS., Phone Main 1122, 82 Germain Street.



Weather Insurance

Rain or snow, if they find even a small crack in your roof, can do almost as much damage as a fire.

NEPONSET
Paroid Roofing

gives absolute protection against storm. NEPONSET Paroid Roofing cannot leak. It has proved it in every climate under every condition for a great many years.

GANDY & ALLISON, Sole Agents, North Wharf

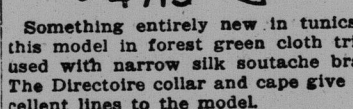
The Edison Diamond Disc
Phonograph

When you hear this new Phonograph certain superlatives are at once obvious. The permanent reproducing point does away with the old trouble of changing needles. The disc, the finished product of Mr. Edison's three years of patient experimenting brings out a myriad of minute overtones that join in producing a rich, mellow tone quality. But it is not until you hear it play that you grasp the full possibilities of pleasure that this instrument has in store for you. The new Phonograph is a distinguished contribution to the art of musical interpretation. Come in any time.

SEE OUR WINDOW DISPLAY

W. H. THORNE & CO. LTD.
MARKET SQUARE & KING ST.Easy & Practical
Home Dress Making
LessonsPrepared Especially for This Newspaper by
Pictorial Review

THE TUNIC WAIST.



that it is almost impossible to keep posted regarding the different names by which it is called. Here is an excellent model for ladies and misses. It is carried out in forest green cloth, trimmed with braid. The Directorate collar is lined with silk, and the cape buttons to the long shoulders with decorative buttons. Braid makes the most suitable trimming for the design. Accompanying it is a plain skirt, and to make the entire costume required 4 1/2 yards of 44-inch material and 4 yards of soutache braid for the trimming. One yard of 3/8-inch silk lines the cape and collar.

There are fourteen pieces to the pattern, seven of which are placed on a lengthwise fold of the goods. The tunic section, back, collar and belt are laid directly on the lengthwise fold. Toward the end, above the tunic, the sleeve is arranged, then running along a lengthwise thread, above the back collar, etc., the second tunic section (2) and front (A) are placed.

Now, underface the front of the waist from front edge to small "o" perforations. Close under-arm seam as notched, close shoulder seam. Gather lower edge between double "v" perforations. Sew stay to lower edge, centers even, large "o" perforation at under-arm seam and bring small "o" perforation to double "o" perforation in front. Sew round collar to neck edge as notched. Sew Directorate collar to neck edge as notched and bring small "o" perforation to corresponding perforation in front. Roll front as illustrated to form revers. Sew standing collar to shield as notched; adjust to position, bringing large "o" perforation to corresponding perforation in front.

Close sleeve seam and ease into drooping armhole without fullness. Adjust the cape to position, making the center-back and neck edges even. Bring small "o" perforations to corresponding small "o" perforations in front along shoulder seam.

The tunic sections are now joined, the hem is turned in the front and then gathered and sewed to lower edge of waist over stay, center-backs even and seam at under-arm seam. Adjust belt and add buttons. The braid should be done before adding the belt, revers, etc., to the garment. Buttons to match the braid make a pretty finish.

CUTTING GUIDE 5881

FOLD OF 54 INCH MATERIAL WITH NAP. Pictorial Review pattern No. 5881. Sizes 22, 24, 26, 28, 30, 32 and 34 waist. Price, 15 cents. Skirt, No. 4719. Sizes 22, 24, 26, 28, 30, 32 and 34 waist. Price, 15 cents. Braiding design, No. 12089. Transfer pattern, 15 cents.

Patterns published in this series may be obtained by sending price of pattern in cash or stamps to The Evening Times and Star, Pictorial Review Department, 23 Germain Street, St. John, N. B. As a rule it takes about one week to deliver the pattern to the buyer. Those sending money must be careful (1) to write the number of the pattern plainly (2) to write their name and post office address clearly and (3) to enclose the price.

Name _____
P. O. Address in full _____
Number of Pattern _____ Size of Pattern _____

Order by number only. Remit in stamps or currency. The Evening Times Pattern Department, St. John, N. B.

GREAT SIEGE GUNS A
FEATURE OF THE WAR

RHEUMATIC MISERY

Can Only Be Cured Through the Blood
—Liniments Are No Use

In no disease does the blood become so rapidly as in rheumatism. Not only does it become thin but it is loaded with impurities—rheumatic poisons. Without the proper treatment these poisons increase, the inflamed joints swell and the patient becomes a cripple. There are a number of methods of treating rheumatism, most of them aiming to keep down the rheumatic poisons in the blood. Some build up the blood sufficiently to overcome them. But unfavorable conditions of cold or dampness give the disease the advantage and a relapse or renewed attack follows.

Dr. Williams' Pink Pills for Pale People build up the blood and enable it to cast out the rheumatic poisons with the natural secretions of the body. Numerous have tried this treatment with the most beneficial results. That every sufferer who does not try Dr. Williams' Pink Pills is neglecting the most helpful means of recovery is shown by the following statement. Mrs. Emeline Smith, St. Jerome, Ont., says: "I was attacked with what the doctor said was inflammatory rheumatism. The joints of my hands, feet and limbs were badly swollen, and I suffered the most excruciating pain. Notwithstanding medical treatment the trouble became so bad that I could not go about. My appetite began to fail me and I was growing physically weak. A neighbor who had been benefited by Dr. Williams' Pink Pills advised me to try them and I decided to do so. In the course of a few weeks I noted some improvement, and my appetite began to return. Then the swelling in my joints began to disappear, and it was not long until I was perfectly cured and I have had no return of the trouble."

Dr. Williams' Pink Pills are sold by all dealers in medicine or will be sent by mail at 50 cents a box or six boxes for \$2.50 by writing direct to The Dr. Williams' Medicine Co., Brockville, Ont.

Before the mortars could be erected and placed in working order, it was necessary to provide heavy masonry foundations, of sufficient area and mass to withstand the heavy shock of recoil. It can readily be understood that this preliminary work entailed the loss of much valuable time.

This was the method employed by the Japanese in the reduction of Port Arthur. This enterprising people was the first to employ 11-inch siege guns for the reduction of permanent fortifications. They dismantled a large number of their coast defense mortars in Japan; transported them to the base of Port Arthur; laid a light military railroad from Dalny to the base at the hills encircling Port Arthur; built heavy concrete foundations; and erected upon them the mortars and their gun carriages. It was these siege pieces which assisted in the sinking of Russian ships in Port Arthur, and contributed very largely to the reduction of the fortress which crowned the hills around that city.

Up to the time of the Russo-Japanese War, a distinction was made between heavy and light siege units. The latter were mounted upon wheeled carriages, and they were capable of being moved with an army on the march. The heavier siege units, say of from 9-inch to 11-inch calibre required special means of transportation. The massive parts, such as the gun and its carriage had to be conveyed by standard gauge railway or by ship to some place adjacent to the field of operations, whence it was customary to lay a light military railway or devise other special means of transporting the batteries to the locations assigned to them.

Before the mortars could be erected and placed in working order, it was necessary to provide heavy masonry foundations, of sufficient area and mass to withstand the heavy shock of recoil. It can readily be understood that this preliminary work entailed the loss of much valuable time.

This was the method employed by the Japanese in the reduction of Port Arthur. This enterprising people was the first to employ 11-inch siege guns for the reduction of permanent fortifications. They dismantled a large number of their coast defense mortars in Japan; transported them to the base of Port Arthur; laid a light military railroad from Dalny to the base at the hills encircling Port Arthur; built heavy concrete foundations; and erected upon them the mortars and their gun carriages. It was these siege pieces which assisted in the sinking of Russian ships in Port Arthur, and contributed very largely to the reduction of the fortress which crowned the hills around that city.

Up to the time of the Russo-Japanese War, a distinction was made between heavy and light siege units. The latter were mounted upon wheeled carriages, and they were capable of being moved with an army on the march. The heavier siege units, say of from 9-inch to 11-inch calibre required special means of transportation. The massive parts, such as the gun and its carriage had to be conveyed by standard gauge railway or by ship to some place adjacent to the field of operations, whence it was customary to lay a light military railway or devise other special means of transporting the batteries to the locations assigned to them.

Before the mortars could be erected and placed in working order, it was necessary to provide heavy masonry foundations, of sufficient area and mass to withstand the heavy shock of recoil. It can readily be understood that this preliminary work entailed the loss of much valuable time.

This was the method employed by the Japanese in the reduction of Port Arthur. This enterprising people was the first to employ 11-inch siege guns for the reduction of permanent fortifications. They dismantled a large number of their coast defense mortars in Japan; transported them to the base of Port Arthur; laid a light military railroad from Dalny to the base at the hills encircling Port Arthur; built heavy concrete foundations; and erected upon them the mortars and their gun carriages. It was these siege pieces which assisted in the sinking of Russian ships in Port Arthur, and contributed very largely to the reduction of the fortress which crowned the hills around that city.

Up to the time of the Russo-Japanese War, a distinction was made between heavy and light siege units. The latter were mounted upon wheeled carriages, and they were capable of being moved with an army on the march. The heavier siege units, say of from 9-inch to 11-inch calibre required special means of transportation. The massive parts, such as the gun and its carriage had to be conveyed by standard gauge railway or by ship to some place adjacent to the field of operations, whence it was customary to lay a light military railway or devise other special means of transporting the batteries to the locations assigned to them.

Before the mortars could be erected and placed in working order, it was necessary to provide heavy masonry foundations, of sufficient area and mass to withstand the heavy shock of recoil. It can readily be understood that this preliminary work entailed the loss of much valuable time.

This was the method employed by the Japanese in the reduction of Port Arthur. This enterprising people was the first to employ 11-inch siege guns for the reduction of permanent fortifications. They dismantled a large number of their coast defense mortars in Japan; transported them to the base of Port Arthur; laid a light military railroad from Dalny to the base at the hills encircling Port Arthur; built heavy concrete foundations; and erected upon them the mortars and their gun carriages. It was these siege pieces which assisted in the sinking of Russian ships in Port Arthur, and contributed very largely to the reduction of the fortress which crowned the hills around that city.

Up to the time of the Russo-Japanese War, a distinction was made between heavy and light siege units. The latter were mounted upon wheeled carriages, and they were capable of being moved with an army on the march. The heavier siege units, say of from 9-inch to 11-inch calibre required special means of transportation. The massive parts, such as the gun and its carriage had to be conveyed by standard gauge railway or by ship to some place adjacent to the field of operations, whence it was customary to lay a light military railway or devise other special means of transporting the batteries to the locations assigned to them.

Before the mortars could be erected and placed in working order, it was necessary to provide heavy masonry foundations, of sufficient area and mass to withstand the heavy shock of recoil. It can readily be understood that this preliminary work entailed the loss of much valuable time.

This was the method employed by the Japanese in the reduction of Port Arthur. This enterprising people was the first to employ 11-inch siege guns for the reduction of permanent fortifications. They dismantled a large number of their coast defense mortars in Japan; transported them to the base of Port Arthur; laid a light military railroad from Dalny to the base at the hills encircling Port Arthur; built heavy concrete foundations; and erected upon them the mortars and their gun carriages. It was these siege pieces which assisted in the sinking of Russian ships in Port Arthur, and contributed very largely to the reduction of the fortress which crowned the hills around that city.

Up to the time of the Russo-Japanese War, a distinction was made between heavy and light siege units. The latter were mounted upon wheeled carriages, and they were capable of being moved with an army on the march. The heavier siege units, say of from 9-inch to 11-inch calibre required special means of transportation. The massive parts, such as the gun and its carriage had to be conveyed by standard gauge railway or by ship to some place adjacent to the field of operations, whence it was customary to lay a light military railway or devise other special means of transporting the batteries to the locations assigned to them.

Before the mortars could be erected and placed in working order, it was necessary to provide heavy masonry foundations, of sufficient area and mass to withstand the heavy shock of recoil. It can readily be understood that this preliminary work entailed the loss of much valuable time.

This was the method employed by the Japanese in the reduction of Port Arthur. This enterprising people was the first to employ 11-inch siege guns for the reduction of permanent fortifications. They dismantled a large number of their coast defense mortars in Japan; transported them to the base of Port Arthur; laid a light military railroad from Dalny to the base at the hills encircling Port Arthur; built heavy concrete foundations; and erected upon them the mortars and their gun carriages. It was these siege pieces which assisted in the sinking of Russian ships in Port Arthur, and contributed very largely to the reduction of the fortress which crowned the hills around that city.

Up to the time of the Russo-Japanese War, a distinction was made between heavy and light siege units. The latter were mounted upon wheeled carriages, and they were capable of being moved with an army on the march. The heavier siege units, say of from 9-inch to 11-inch calibre required special means of transportation. The massive parts, such as the gun and its carriage had to be conveyed by standard gauge railway or by ship to some place adjacent to the field of operations, whence it was customary to lay a light military railway or devise other special means of transporting the batteries to the locations assigned to them.

Before the mortars could be erected and placed in working order, it was necessary to provide heavy masonry foundations, of sufficient area and mass to withstand the heavy shock of recoil. It can readily be understood that this preliminary work entailed the loss of much valuable time.

This was the method employed by the Japanese in the reduction of Port Arthur. This enterprising people was the first to employ 11-inch siege guns for the reduction of permanent fortifications. They dismantled a large number of their coast defense mortars in Japan; transported them to the base of Port Arthur; laid a light military railroad from Dalny to the base at the hills encircling Port Arthur; built heavy concrete foundations; and erected upon them the mortars and their gun carriages. It was these siege pieces which assisted in the sinking of Russian ships in Port Arthur, and contributed very largely to the reduction of the fortress which crowned the hills around that city.

Up to the time of the Russo-Japanese War, a distinction was made between heavy and light siege units. The latter were mounted upon wheeled carriages, and they were capable of being moved with an army on the march. The heavier siege units, say of from 9-inch to 11-inch calibre required special means of transportation. The massive parts, such as the gun and its carriage had to be conveyed by standard gauge railway or by ship to some place adjacent to the field of operations, whence it was customary to lay a light military railway or devise other special means of transporting the batteries to the locations assigned to them.

Before the mortars could be erected and placed in working order, it was necessary to provide heavy masonry foundations, of sufficient area and mass to withstand the heavy shock of recoil. It can readily be understood that this preliminary work entailed the loss of much valuable time.

This was the method employed by the Japanese in the reduction of Port Arthur. This enterprising people was the first to employ 11-inch siege guns for the reduction of permanent fortifications. They dismantled a large number of their coast defense mortars in Japan; transported them to the base of Port Arthur; laid a light military railroad from Dalny to the base at the hills encircling Port Arthur; built heavy concrete foundations; and erected upon them the mortars and their gun carriages. It was these siege pieces which assisted in the sinking of Russian ships in Port Arthur, and contributed very largely to the reduction of the fortress which crowned the hills around that city.

Up to the time of the Russo-Japanese War, a distinction was made between heavy and light siege units. The latter were mounted upon wheeled carriages, and they were capable of being moved with an army on the march. The heavier siege units, say of from 9-inch to 11-inch calibre required special means of transportation. The massive parts, such as the gun and its carriage had to be conveyed by standard gauge railway or by ship to some place adjacent to the field of operations, whence it was customary to lay a light military railway or devise other special means of transporting the batteries to the locations assigned to them.

Before the mortars could be erected and placed in working order, it was necessary to provide heavy masonry foundations, of sufficient area and mass to withstand the heavy shock of recoil. It can readily be understood that this preliminary work entailed the loss of much valuable time.

This was the method employed by the Japanese in the reduction of Port Arthur. This enterprising people was the first to employ 11-inch siege guns for the reduction of permanent fortifications. They dismantled a large number of their coast defense mortars in Japan; transported them to the base of Port Arthur; laid a light military railroad from Dalny to the base at the hills encircling Port Arthur; built heavy concrete foundations; and erected upon them the mortars and their gun carriages. It was these siege pieces which assisted in the sinking of Russian ships in Port Arthur, and contributed very largely to the reduction of the fortress which crowned the hills around that city.

Up to the time of the Russo-Japanese War, a distinction was made between heavy and light siege units. The latter were mounted upon wheeled carriages, and they were capable of being moved with an army on the march. The heavier siege units, say of from 9-inch to 11-inch calibre required special means of transportation. The massive parts, such as the gun and its carriage had to be conveyed by standard gauge railway or by ship to some place adjacent to the field of operations, whence it was customary to lay a light military railway or devise other special means of transporting the batteries to the locations assigned to them.

Before the mortars could be erected and placed in working order, it was necessary to provide heavy masonry foundations, of sufficient area and mass to withstand the heavy shock of recoil. It can readily be understood that this preliminary work entailed the loss of much valuable time.

This was the method employed by the Japanese in the reduction of Port Arthur. This enterprising people was the first to employ 11-inch siege guns for the reduction of permanent fortifications. They dismantled a large number of their coast defense mortars in Japan; transported them to the base of Port Arthur; laid a light military railroad from Dalny to the base at the hills encircling Port Arthur; built heavy concrete foundations; and erected upon them the mortars and their gun carriages. It was these siege pieces which assisted in the sinking of Russian ships in Port Arthur, and contributed very largely to the reduction of the fortress which crowned the hills around that city.

Up to the time of the Russo-Japanese War, a distinction was made between heavy and light siege units. The latter were mounted upon wheeled carriages, and they were capable of being moved with an army on the march. The heavier siege units, say of from 9-inch to 11-inch calibre required special means of transportation. The massive parts, such as the gun and its carriage had to be conveyed by standard gauge railway or by ship to some place adjacent to the field of operations, whence it was customary to lay a light military railway or devise other special means of transporting the batteries to the locations assigned to them.

Before the mortars could be erected and placed in working order, it was necessary to provide heavy masonry foundations, of sufficient area and mass to withstand the heavy shock of recoil. It can readily be understood that this preliminary work entailed the loss of much valuable time.

This was the method employed by the Japanese in the reduction of Port Arthur. This enterprising people was the first to employ 11-inch siege guns for the reduction of permanent fortifications. They dismantled a large number of their coast defense mortars in Japan; transported them to the base of Port Arthur; laid a light military railroad from Dalny to the base at the hills encircling Port Arthur; built heavy concrete foundations; and erected upon them the mortars and their gun carriages. It was these siege pieces which assisted in the sinking of Russian ships in Port Arthur, and contributed very largely to the reduction of the fortress which crowned the hills around that city.

Up to the time of the Russo-Japanese War, a distinction was made between heavy and light siege units. The latter were mounted upon wheeled carriages, and they were capable of being moved with an army on the march. The heavier siege units, say of from 9-inch to 11-inch calibre required special means of transportation. The massive parts, such as the gun and its carriage had to be conveyed by standard gauge railway or by ship to some place adjacent to the field of operations, whence it was customary to lay a light military railway or devise other special means of transporting the batteries to the locations assigned to them.

Before the mortars could be erected and placed in working order, it was necessary to provide heavy masonry foundations, of sufficient area and mass to withstand the heavy shock of recoil. It can readily be understood that this preliminary work entailed the loss of much valuable time.

This was the method employed by the Japanese in the reduction of Port Arthur. This enterprising people was the first to employ 11-inch siege guns for the reduction of permanent fortifications. They dismantled a large number of their coast defense mortars in Japan; transported them to the base of Port Arthur; laid a light military railroad from Dalny to the base at the hills encircling Port Arthur; built heavy concrete foundations; and erected upon them the mortars and their gun carriages. It was these siege pieces which assisted in the sinking of Russian ships in Port Arthur, and contributed very largely to the reduction of the fortress which crowned the hills around that city.

Men's "Burberry"
Overcoats For Fall
and Winter

Burberry's rely for their efficiency and world-wide supremacy on their careful selection of the finest raw materials, on their exclusive methods of weaving and proofing, and on their scientific combinations of fabrics, which prevent the intrusion of damp or cold and main tain an equable physical temperature whatever be the condition of the external atmosphere.

One of the unique features which give to Burberry its universally recognized pre-eminence is the proof, which is free from all deleterious ingredients and is applied by a process—available only by Burberrys, and the result of long and costly experiments—first to the fibres from which the strands of yarn are twisted, next to the yarn itself, and finally to the woven material.

Impregnating every separate molecule of which the cloth is composed and becoming an inherent element of its substance, as long as a Burberry fabric holds together the proof remains an integral and ineradicable part of it.

In this fine showing of the world-famed "Burberry" Overcoats for winter wear, we offer a great variety of models in the slip-on style, some buttoned to the neck with full belts, others with ulster collars and half belt effect, while a number are in the plain back style. Plain and split sleeves, silk shoulder and sleeve linings.

This is the greatest exhibit of "Burberry" Overcoats we have ever made, and the diversity of cloths and colorings will not fail to please. There are Naps, Whitneys, Fleece Shetlands and Chinchillas, beautiful soft, warm cloths, mostly made in the double-faced style with fancy check backs. Others in Diagonal weaves and fancy mixtures, and with plain backs. Also a great variety of heather and plain cloths in browns, greys, fawns and greens.

Prices Range From \$28.50 to \$49.00

MEN'S CLOTHING DEPARTMENT

Manchester Robertson Allison, Limited

NEXT BILL AT OPERA
HOUSE A FINE ONE

Comedy Element Delightful — A Strong Attraction For the Holiday

At the Opera House next week the Thompson-Woods Stock Co. will present "Our New Minister," a rural comedy in three acts.

This play was written by Denman Thompson and used by him for several seasons as a starring vehicle. The scenes are laid in New England in a village called "Hardscrabble," named so as the village storekeeper puts it, because it is "hardscrabble" to get a living there. The play, despite its name, is largely comedy and holds the mirror up to life, as it is lived in many of the New England villages. The quaint philosophy of the Yankees, couched in the twang peculiar to them, causes a great deal of laughter in the course of the performance. The play was seemingly written for the purpose of making people laugh than with any other idea and it succeeds admirably in its mirth provoking mission.

Will D. Howard will be seen to advantage as "Our New Minister," Miss Lois Howell will have an excellent opportunity as Nance Ransom, while the rest of the cast will be in capable hands. Among those appearing next week will be Frank MacDonald, William H. Dinck, Robert Arnold, Lyman A. Allen, B. Strought, Arthur McCloskey, Florence Chapman, Marion Chester, Mabelle Storm and Ida Pears.

A special Thanksgiving Day matinee will be given on Monday.

DIGGING TRENCHES UNDER FIRE

In the reports of the war in Europe it is frequently stated that the advance lines of the armies threw up intrenchments and it is difficult for the ordinary reader to understand how this is done, for to him anything like a formation appears to be a matter of considerable time and labor, which could not be accomplished with the enemy raining shot and shell. What these protections are and how they are formed is clearly explained in the special war issue of the Scientific American of October 8, by a military expert in an interesting story about fortifications generally.

The advancing line may have suffered great losses, or the ammunition may be running low. At all events, it finds itself unable to gain ground to the front. To retreat would be fatal. It must remain where it is—some of the men find natural cover, but many must provide artificial protection from the enemy's rifle fire. The men are lying down as flat as they can. To arise, even to a kneeling position means death or a disabling wound.

The necessity for cover under these circumstances caused men to devise the lying down trench, sometimes called the skirmisher's trench. It gives cover from rifle fire to a man lying down, but is absolutely no protection from shrapnel bullets. The height of the parapet should not exceed one foot. The trench itself is about two and a half feet wide and about six feet long. It can be constructed by one man in soft ground, using the portable intrenching tools, in about twenty minutes. Under fire, as outlined in the foregoing, the man being compelled to remain in the prone position, he can make himself from view in from ten to fifteen minutes and complete the trench in forty to forty-five minutes. In this position, and in view of the

Tonight
at Daniel'sTHE "SATURDAY NIGHT SHOPPING CENTRE"
Store Open Until 10 p.m.

New Neckwear for the Holiday just in. Lots of those Pretty Pique Collar and Cuff Sets also. Showing of Women's New Fall Coats at popular prices. \$8.90 to \$13.90
Sale of Wash Dresses—Suitable for house wear, up to \$5.50. At \$2.58 Each
Sale of Gingham and Cambric Dresses, up to \$2.65. At \$1.78 Each
Sale of Black Sateen Dresses with white, hemstitched collar and cuffs. \$3.98 Each
Sale of Black Blouses—Value \$1.35. Tonight, \$1.00 Each
Special—Women's Serge Dresses, all-wool. Regular up to \$7.50 each. Tonight, \$5.00 Each
New Silk Jersey Top Underskirts. \$3.98 Each
Sale of Good Mercerized Tapestry Portieres—Sold singly or in pairs. \$1.99 and \$1.25 Each
Sale of Children's Black Rubber School Raincoats: 6 to 14 years. \$3.98 Each
Sale of Women's Crepe Kimonos—Plain colors. \$1.58 Each
Sale of Good Quality White Blouses at reduced prices. 98c. to \$1.98
Infants' Short Kimono Jackets. Tonight, 39c. Each

"LONDON HOUSE" - Head King St.

small number of portable intrenching tools carried by the company, the man would be obliged to use his knife bayonet to loosen the earth and the cover of his meat can to shovel it in front of him. One of the methods of working suggested by the text books is to dig a trench eighteen inches wide as far back as the knees; roll into it and dig twelve inches wide along side of it and down to the feet; then roll into the second cut and extend the first one back to the feet. This trench was seldom used in the Manchurian war. The best that can be said for it is that men can obtain slight cover under a hot fire with a minimum of casualties because it involves less digging, and they are partially protected from the very beginning of the work.

Rev. David Jenkins, rector of St. Alban's Anglican church at Riverside, Albert county, has accepted the pastorate at Petersville, N.B., and will take up his duties at the last of this month.

The last year saw a record in the output of British merchant ships. The actual tonnage was 1,682,000, while that of warships was more than 271,000 tons.

GIRLS! HAVE BEAUTIFUL, LUSTROUS,
FLUFFY HAIR—25 CENT DANDERINE

No More Dandruff or Falling Hair
—A Real Surprise
Awaits You

To be possessed of a head of heavy, beautiful hair; soft, lustrous, fluffy, wavy and free from dandruff is merely a matter of using a little Danderine. It is easy and inexpensive to have nice, soft hair and lots of it. Just get a 25 cent bottle of Knowlton's Danderine now—all drug stores recommend it—in the foregoing, the man being compelled to remain in the prone position, he can make himself from view in from ten to fifteen minutes and complete the trench in forty to forty-five minutes. In this position, and in view of the

you will you cannot find a trace of dandruff or falling hair; but your real surprise will be after about two weeks' use, when you will see new hair—fine and downy at first—yet—but really new hair—sprouting out all over your scalp—Danderine is, we believe, the only sure hair grower; destroyer of dandruff and cure for itchy scalp and it never fails to stop falling hair at once. If you want to prove how pretty and soft your hair really is, moisten a cloth with a little Danderine and carefully draw it through your hair—taking one small strand at a time. Your hair will be soft, glossy and beautiful in just a few moments—a delightful surprise awaits everyone who tries this.

Bring Home
Vacation
Scenes

Let us fit you out for taking pictures of fishing haunts and of holiday scenes you'd like to remember. We carry a full line of CAMERAS and PHOTO SUPPLIES.

S. H. Hawker's Drug Store
Corner Mill Street and Paradise Row