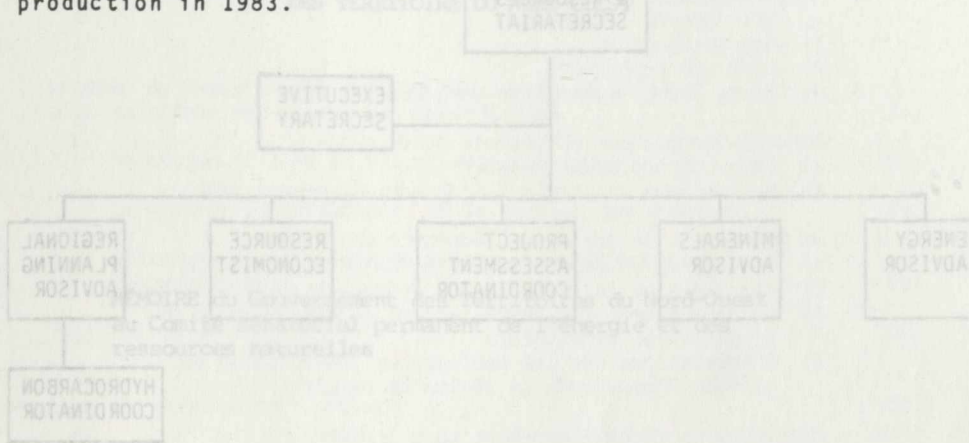


1983. Lake use permit activity also remained steady, with about 215 applications processed compared to 200 in 1983.

Administration and control of lands were transferred to the Commissioner for the following communities: Pond Inlet, Rankin Inlet, Cape Dorset, Spence Bay, Eskimo Point, Baker Lake and Coral Harbour.

In 1984, eight licences were issued by the N.W.T. Water Board and 11 public hearings were held throughout the N.W.T.

Although demand for lumber has been slow, production in 1984 is expected to increase over the much-reduced timber production in 1983.



Secrétariat à l'Énergie, aux Mines et aux Ressources
Gouvernement des Territoires du Nord-Ouest
le 7 avril 1985