

CLASS ROOM, TODMORDEN SCHOOL.

serve both the present and future requirements. All class rooms are equipped with a cloak room and closet. They are of the usual size for public school work, seating forty-eight pupils, and are lighted from the left-hand side by large three-light windows facing in the present building north and south.

In the basement are the playrooms, lavatories and heating and ventilating plant. The playrooms are very large, with concrete floors, and give direct access to adjoining lavatories. The heating and ventilating chamber is in the centre of the building, and is laid out to take care of the completed school. Connected with it there is a dust chamber to receive the dust from the chute from the upper floors, and provision is made to conveniently remove the ashes. The lavatories are not equipped at present with fixtures, as in

the district in which the school is located there is no sewerage drainage, and all rain water seepage is drained to Pape avenue. However, the drains and vents are in place, so that the installation of the plumbing will be a simple matter.

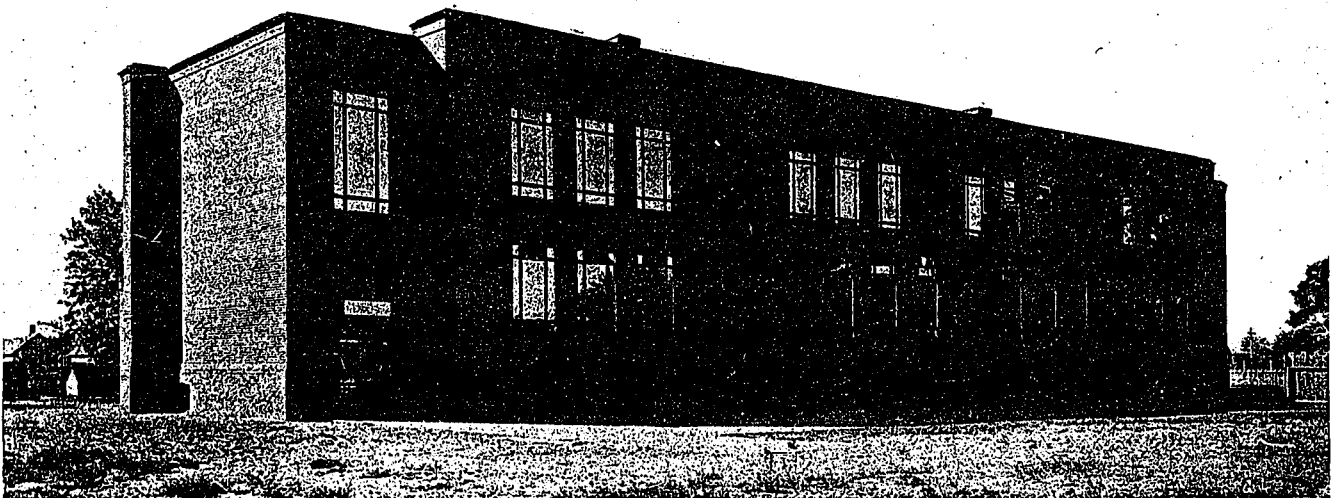
Both the floor system and partitions are of terra cotta tile carried on structural steel. The floor tile is finished on top with cinder concrete to give a base to the flooring, and the exterior walls are of pressed brick in varied tones, with special made moulds for base and cornice.

The interior walls are furnished to sill height with a Keene's cement dado, and plastered above with lime plaster. In the coat rooms the Keene's cement is car-

ried to the coat rail. The blackboards used are slate.

The flooring is of fireproof composition, an attractive buff in color with dark borders, and a sanitary wall base. The special design of the floor of the kindergarten room is shown in the illustration. It contains a novel feature in which marching paths are marked out in various colors in a design worked into the flooring material, this being the first time this method of permanently marking a floor has been adopted in a Canadian school. Besides being attractive, it provides a sanitary dust-proof floor, the fireproof feature of which should be considered every time a school is erected.

The air for ventilation is drawn over ventu-  
stack radiators and delivered in the usual way through galvanized iron ducts to the foot of vertical shafts built of terra cotta tile. These



NORTH ELEVATION.