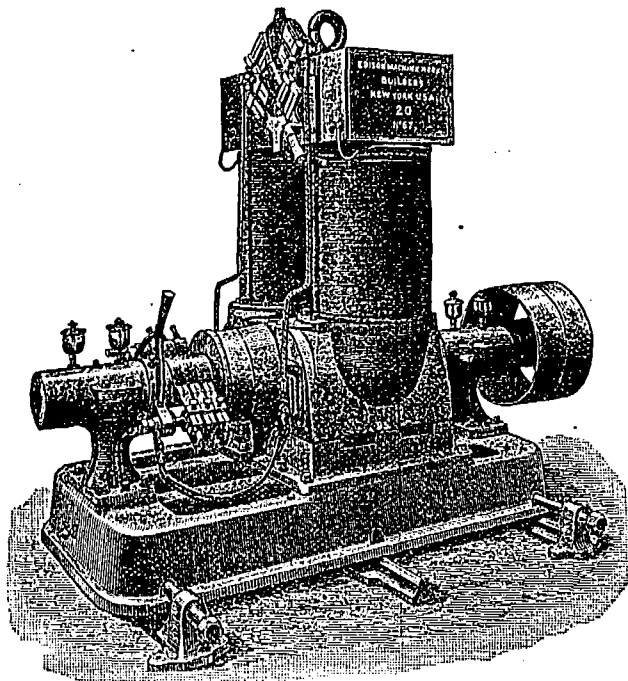


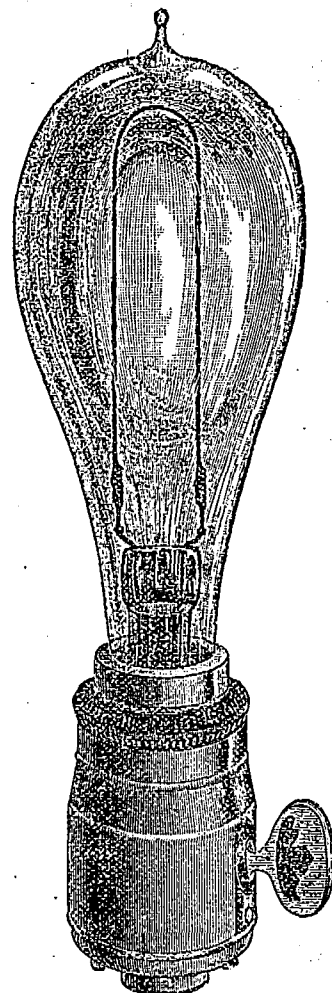
THE "EDISON" ELECTRIC LIGHT SYSTEM.

Construction and Supply Department for the
Dominion of Canada.

M. D. BARR, - 726 Craig St.,
NEAR VICTORIA SQUARE.



EDISON DYNAMO.



EDISON LAMP AND SOCKET.

The EDISON System has in operation in the United States and Canada more than 1000 INSTALLATIONS, using 100,000 HORSE POWER, and supplying current for over 1,000,000 LAMPS.

CENTRAL STATIONS.

The Edison System of Central Station distribution is the only permanently established and commercially successful method yet invented, and has enlisted more capital and put under construction within the past year a Central Station Capacity far in excess of the entire incandescent work of all the other companies combined.

ISOLATED PLANTS.

The Edison Isolated Plants always give the utmost satisfaction. We do not aim at lowest first cost, but what we guarantee is: Highest Efficiency, Greatest Durability, the best Mechanical Construction, Greatest Economy of Power, the most Perfect Regulation, Steadiness of Light, the Longest Life of Lamps, **LOWEST COST OF OPERATION**, and 12 Sixteen-Candle-Power Lamps to a horse power.

The Wiring of buildings for Incandescent Light a specialty. Estimates will be promptly furnished both for wiring and making complete installations.

Also in stock a full line of all kinds of **ELECTRICAL APPARATUS**. Write for prices of anything that you may require.

M. D. BARR,

726 Craig Street, near Victoria Square.