

**ALWAYS IN STOCK**

# **PIG LEAD, PIG TIN AND SOLDER**

Syracuse Smelting Works, Montreal, P.Q.

# **ARTIFICIAL STONE PAVEMENTS**

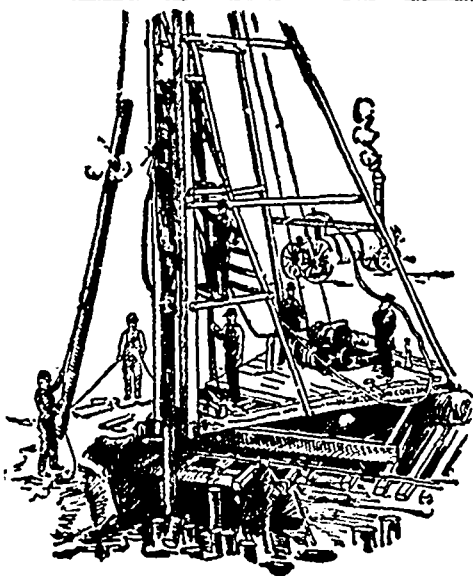
**SIDEWALKS A SPECIALTY**

**CORPORATIONS** Will do well to consider our work and prices before letting contracts

The Silica Baritic Stone Company of Ontario, Limited.

WALTER MILLS  
General Manager.

Head Office:  
INGERSOLL, ONT.



# **PILE DRIVING**

on land or water by Steam Pile Drivers or Drop Hammers.

**Portable Boilers  
Hoisting Engines  
Pumping Machinery**

**TO LET**

Bridge Building, Trestle Work, Wharves, Dams, Diving Submarine Work and General Contracting.

**WM. HOOD & SON**

10 Richmond Sq. - MONTREAL

# **PORTLAND CEMENT**

**SAMSON BRAND**

**MAGNET BRAND**

MANUFACTURED BY

THE OWEN SOUND PORTLAND CEMENT COMPANY, Limited, Owen Sound, Ont.  
Works at **SHALLOW LAKE, ONT.** Write us for prices.

# **THE CANADIAN PORTLAND CEMENT COMPANY, LIMITED**

Manufacture **"RATHBUN'S STAR"** Brand

The Leading Canadian Portland Cement.

Capacity of Works: 500,000 Barrels Per Year.

**SALBS AGENTS**

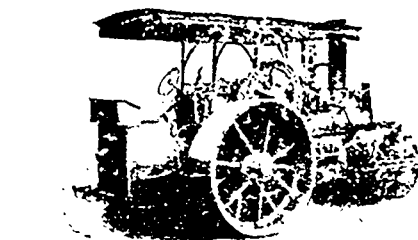
The **RATHBUN CO.**  
310-312 Front Street West, TORONTO, ONT.

St. Lawrence Portland Cement Co.  
2664 Notre Dame Street West, MONTREAL, QUE.

# **LIGHTNESS, STRENGTH AND ECONOMY**

Seagrave Patent Trussed Ladders, Trussed Aerial, City Service and Village Hook and Ladder Trucks, Combination Hook and Ladder Trucks and Chemical Engines, Trussed Trucks and Hand Pumps, Combination Hose Wagons and Chemical Engines, Hose Wagons, Combination Hook and Ladder Trucks and Hose Wagons, Chemical Engines, Fire Extinguishers, Hose Reels, Patrol Wagons, Ambulances, Specialty Wagons, Patent Sleigh Runners, and other Modern Fire Fighting Tools.

Prompt attention given all inquiries. All goods built to order  
Long Distance Phones 686 and 684 **W. E. SEAGRAVE, WALKERVILLE, ONT.**



# **FIRE APPARATUS and ROAD MACHINERY**

**FIRE ENGINES** in five sizes, with a full line of fire-fighting goods

We Rebuild other makes of Fire Engines with our patent Boiler.

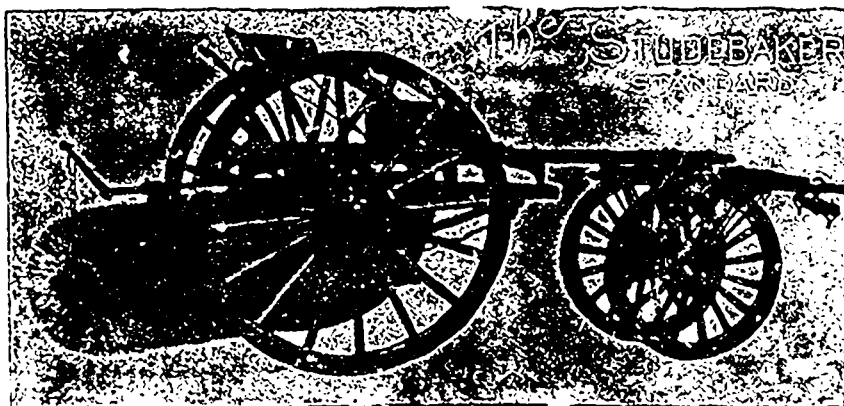
# **BRANTFORD PITTS DOUBLE ENGINE STEAM ROAD ROLLER**

IN THREE SIZES—10, 12 and 15 ton.

CORRESPONDENCE SOLICITED.

**WATEROUS, Brantford, Canada**

Hugh Cameron & Co., Selling Agents, 16 East Queen Street, Toronto



# **Studebaker Sprinkler**

(PATENT IMPROVED.)

Does not clog or get out of order. Greatest width of spray can be graded from driver's seat to any volume. We also make an...

**IMPROVED VERTICAL SPRAY**

for Pavement

Geo. Heaman, Mfr., London, Ont

Stockpile  
Patent Improved

# **Street Sweeping Machine**

Is the Standard  
of Perfection.

Because no sweeper so effectually does the work for which it is designed as "The Studebaker." It Sweeps Clean. No sweeper is constructed with the same degree of care and mechanical precision. It Wears "Well." "The Studebaker" has the smallest possible number of working parts, and this is caring that, any other sweeper made. It is free from unnecessary complications. With reasonable care it does not get out of order. Send for complete descriptive catalogue