

AIR DATES 1921
 ...19, 20, 21 Sept.
 ...22, 23 Sept.
 ...26, 27 Sept.
 ...28, 29, 30 Sept.
 ...3, 4 October
 ...5, 6, 7 October
 ...10, 11 October
 ...11, 12 October

ESS IS OUR MOTTO

our intention to
 nly the very best
 n that we can get.
 rith fresh, season-
 ts and syrups.

**CAKES, PASTRY
 VAYS FRESH**

edding will not be
 unless you have
 ur beautiful Cakes.

L. Lovell's

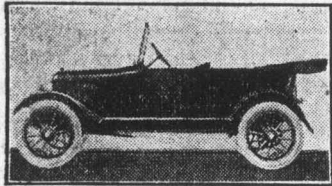
Overland
 TRADE MARK REG.

now \$985

REDUCED OVERLAND PRICES

- Touring - \$ 985
- Roadster - \$ 985
- Coupe - \$1495
- Sedan - \$1695

F. O. B. TORONTO, Sales Tax Extra
 See us at once for a demonstration.
 Canada's Quality Car at a Practical Price.



WILLIAMS BROS.' GARAGE

SUMMER IRONING

Summer is the season when the housewife looks forward with dread to the week's ironing. It has always meant hours in a very hot kitchen, changing irons continually on a stove that seems as hot as a blast furnace. In this respect the electric iron is one of the greatest comforts the housewife can have.

During the winter the housewife doesn't mind the heat of the stove in the room where she's ironing, but when summer comes and every breath of air is hot enough any way, she finds it most uncomfortable to stand over a hot stove any more than is absolutely necessary. When the electric iron first came into use electricity was available only in the city, and for a long time the electric iron has been a very common article in the city home. But in the last few years Delco light and power plants for the farm home have been developed to a high standard of efficiency and dependability, and the many home uses for electricity are now at the service of the farmer and his whole family. So the farm wife of today meets hot weather with the knowledge that ironing day no longer holds the terror it used to. She attaches the cord of her electric iron to a wall socket and in a minute or so she has an iron as hot as she wants. There's no watching of the fire in the stove; there's no changing of irons every few minutes; all the heat goes where it belongs, to the bottom of the iron. There's a great saving in time, comfort and efficiency.

Of course the providing of current for an iron is just one of the services rendered to the farm home by the Delco electric plant. In addition there's light, the brightest, cleanest and safest in the world, all over the house and barns, and plenty of smooth, quiet power for the pumping, churning, separating and many other farm tasks.

DELCO-LIGHT
 "Electricity for every Farm"

Write for catalog

F. H. JUST

Dealer

PHONE 28, WATFORD

CHOP STUFF

Petrolia sports on Dominion Day will include a balloon ascension and parachute drop.

A big whiskey still was located on the Bissett farm in Harwich together with four barrels of mash and 20 gals of whiskey.

Robert Klee of Harrow was blown 20 feet when he undertook to solder a gasoline tank which had been emptied of its liquid contents for some time but was filled with vapor.

John Beecroft of Norfolk county died recently in his 92nd year. At 90 years of age Mr. Beecroft grew 500 bushels of sugar beets, doing all the work himself. He was no eight hour man.

James Bogue a resident of Strathroy for the past 14 years and formerly of Adelaide died last week aged 84 years. He was widely known and highly esteemed as a progressive farmer in his younger days.

Mr. and Mrs. Frank Knight celebrated the 25th anniversary of their wedding day on Saturday, May 21st, at their new home, 2nd line, Ennis-killen. Many useful and valuable gifts were presented to them by their friends and relatives.

Cause of Asthma. No one can say with certainty exactly what causes the establishing of asthmatic conditions. Dust from the street, from flowers, from grain and various other irritants may set up a trouble impossible to be relieved except through a sure preparation such as Dr. J. D. Kellogg's Asthma Remedy. Uncertainty may exist as to cause, but there can be no uncertainty regarding a remedy which has given relief to a generation of asthmatic victims of this scourge of the bronchial tubes. It is sold everywhere.

Harry P. Richardson of Kerwood, was almost instantly killed Monday in a auto accident at Detroit, when his sedan, was struck by a train. Richardson's wife and their two young children had been spending the holiday with friends in Dearborn eight miles west of Detroit, and Richardson had gone down intending to join them for the evening.

CASTORIA

For Infants and Children
 In Use For Over 30 Years

Always bears
 the
 Signature of *Chas. H. Peterson*

GOOD SHED FOR IMPLEMENTS.

Drainage Should Be Sufficient to Keep Machines Dry.

A servicable implement shed should be thoroughly drained so that the implements do not stand in a wet place. It must protect articles from sun, wind and moisture. It must not be too expensive. It should



An Inexpensive Shed for Various Farm Implements.

be situated in a convenient spot and so arranged as to be easily used. The material from which the shed is made will depend upon the cost and the locality. Very good sheds are made of wood-frame construction, covered with sheet iron. Other good ones can be made of wood-frame construction and closed in with barn siding, drop siding, or with ship-lap. Shingles, corrugated iron or patent roofing make good roofs for machine sheds.

Napoleon and the Sugar Beet.

The centennial of the death of Napoleon recalls attention to one of his most lasting but least known works of peace—the founding of the European beet sugar industry.

In the early days of the nineteenth century food conditions were precarious in France. Agriculture was at a low ebb and sugar sold for a dollar a pound. Napoleon's Berlin decree of 1806, prohibiting imports of foodstuffs, made France more dependent than ever on her own resources. Eager to alleviate the sugar shortage, Napoleon heard the claims of the theorists who maintained that the grape sugar and beet sugar were the sugars of the future. He offered prizes for the best results and set his chemists to the task of making experiments.

At first it seemed as if grape sugar would emerge the victor, but in 1811 Napoleon became convinced of the superior qualities of the beet product. Forthwith he appropriated 1,000,000 francs for six technical beet sugar schools. He prohibited imports of Indian sugars and ordered 79,000 acres to be planted with sugar beets.

Napoleon's interest in the new industry never wavered. A year later he ordered 100 students transferred from the schools of medicine, pharmacy, and chemistry to the beet sugar educational centres. At the same time he ordered the beet sowing increased to 150,000 acres. How successful was Napoleon's sugar policy may be gathered from this extract from a report of one of his Ministers in 1913:

"During this year the manufacture of sugar which is extracted from beet root will give us 7,700,700 pounds of this staple. It is prepared in 334 factories, all of which are in actual activity."

Make Year-Round Customers.

Many producers living near summer resorts supply produce in the summer months to the persons at the resorts, and during the other months of the year ship produce to these persons while they are in the city. This is one of the best methods of obtaining customers for direct marketing, as the producer and consumer have some acquaintance. In most instances the customers have been at the producer's farm and know under what conditions the articles are produced.

One man who lives near a summer resort is about twelve miles from the nearest town of any size. He does not desire to drive to this town to dispose of his farm produce and is not gratified with the prices that the hucksters pay. Consequently he built up a business of supplying products to resorters in the summer and of shipping produce by parcel post and express to these persons at their city homes in the winter.

The principal products shipped are butter, eggs, and dressed poultry. This producer used good shipping containers and packs produce attractively. As he is acquainted with his customers, he renders statements of accounts only once a month. In this way the matter of making payments is simplified for the customers.

This producer has had no trouble in establishing his business nor in retaining customers. He states that his only trouble has been in getting enough high-grade produce to supply all of his customers.



The Roof that beautifies the community

Homes and buildings roofed with Brantford Asphalt Slates lend distinction to the neighborhood. The red and green slates are in Nature's own colors, unfadeable, and harmonize perfectly with the surroundings. You will add attractiveness and value to your home by using

Brantford Asphalt Slates

Roofing with Brantford Asphalt Slates, individual, slab (four in one) or Winthrop tapered, provides a roof covering that lasts for years without repairs or renewals.

Highest quality felt, best grades of asphalt for saturation and coating, and the encrusting of the upper surface with slate—every operation and all materials conform to Brantford-Roofing standards.

Put the Best Roofing on YOUR HOME. Distributed under Brantford Roofing Trade Marks, through Brantford Roofing Dealers. Stock carried, information furnished, service rendered by our dealer in your district.

Brantford Roofing Company, Limited

Head Office and Factory: Brantford, Can.

Branches at Toronto, Montreal, Halifax, Winnipeg 121

SIX ROOF COSTS

- 1—INITIAL COSTS OF MATERIALS.—Brantford Asphalt Slates are sometimes higher in initial cost for the material.
- 2—NAILS REQUIRED.—Brantford Asphalt Slates require ONLY 648 nails to lay a square. Brantford Asphalt Slab Slates require ONLY 450 nails.
- 3—COST OF LAYING.—Brantford Asphalt Slab Slates are four on one strip—require only one operation in handling, one operation in spacing—individual slates are 8x12 3/4 inches—cut easily, fit easily, fit on angles and bend over round surfaces. You save 30 to 50 per cent. in laying.
- 4—NO PAINT OR STAIN REQUIRED.—The surface of Brantford Asphalt Slates is in nature's permanent colors, green and red, unfadeable, always attractive—requiring no stain to produce artistic effects, no liquid costs to make them fire-resistant.
- 5—SAVING OF INSURANCE.—Brantford Asphalt Slates are classed as non-combustible by fire insurance Companies—a direct saving of from 10 to 20 per cent. on premiums is effected. In certain localities fire regulations demand asbestos paper under some roof materials, but Brantford Asphalt Slates are fire-resistant and are immune from special regulations.
- 6—COST OF REPAIRS.—From the day they are laid Brantford Asphalt Slates show almost 100 per cent. of the original roof untouched. Brantford Asphalt Slates do not curl, split, crack or rot. Complete protection and permanent protection are built into Brantford Asphalt Slate Roofs.

For Sale by Geo. Chambers Est.