



**"Here's my idea of a razor—  
—one that sharpens its own blades"**

"Yes, sir, you certainly must admire the Auto-Stop Safety Razor when it comes down to real shaving."

"Why, I remember with my other razor I always had to throw away a blade after a couple of shaves. Now, I simply take it and give it a few turns on the stop and it's as good as ever."

"As for shaving, well, when I get thru with it only takes three minutes—my face is as smooth and slick and comfortable as when the head barber used to go over it. When it comes to cleaning, all I do is simply put the blade under the tap and wipe it off. There's no taking the razor to pieces and messing around with parts. In fact the whole thing is so simple and easy, I wish I had had one long ago."

For \$5.00 you get razor, stop and 12 blades, complete—and a money-back guarantee of satisfaction.

**AUTO-STOP SAFETY RAZOR CO., LIMITED**  
Auto-Stop Building, Toronto, Canada

**Auto-Stop Safety Razor**

## Newfoundland Methodist Conference.

CARBONNEAR.  
(Thursday).

The usual session of the Methodist Conference assembled at Carbonnear, was held at 2:30 p.m., Thursday, June 26th, Dr. Curtis, ex-President, in the chair. After singing hymn 510, Scripture was read by Rev. H. Royle, then prayers were offered by Mr. J. A. Vacher, J.P., and the Rev. W. T. D. Dunn.

The minutes of the last session were read and confirmed. After which the chairman welcomed Dr. Bond to the Presidential chair.

Dr. Bond in a brief and appropriate address thanked the Conference for conferring this honor upon him.

The business of the reports of the various Conference committees.

At 4:30 p.m. a delegation from the Woman's Missionary Society was received. The delegation consisted of eight ladies from the W. M. S., Newfoundland Branch. Mesdames Duff, Maddock and Robb took their seats on the Conference platform. Dr. Bond welcomed the delegation to the Conference and assured them a sympathetic hearing.

Mrs. J. Maddock, Superintendent of the Carbonnear District, addressed the Conference.

"Honoured President, and members of the Newfoundland Conference, I deem it a great privilege to come before you this afternoon on behalf of the W. M. S. Each succeeding year of the Branch has been marked with success. Our work is not new to many of you. Here and there around our Dominion you will find what we familiarly call our W. M. S. These letters stand for much to the women of our Island home. They mean so much to us that you will find where a society is once organized, the work very seldom dies out. It grips and grows into one's very being. But, alas, there are still so many of our women who know nothing of our work. We feel justly proud of our increase this year, which is \$2,788.74 over last year, our total being \$8,344.64. The objective this year asked for was 20 p.c. all around. We had 50 p.c. financial, but only 18 p.c. in membership. You may ask why is this? I may speak this afternoon from a District Superintendent's standpoint. We can do no work, form no societies to reach our women and young people, without the full co-

operation of every minister in the Conference; just as our women need more vision of the great need of the One Billion of our heathen sisters yet unreached, so some of our ministers need more vision with regard to the work of the W. M. S.

Some pastors may think that a W. M. S. on their circuit would interfere with the General Missionary Fund. This is a huge mistake. The dollars our women give would never find their way into the General Fund. On every circuit in this Dominion where an auxiliary has been organized all other funds have gone up. At the recent Branch meeting held at George Street Church, the Rev. Dr. Curtis said, during his remarks, that the large increase this year was largely due to the W. M. S. In this District alone we have added \$1300.00 to the General Fund, and \$705.00 to the W. M. S.

Four years ago when we started to walk alone, we had 19 auxiliaries, and 44 Circles and Bands; to-day we have 21 auxiliaries and 47 Circles and Bands. This is not good enough. I am going to ask every pastor here, that when a District Superintendent writes you, or comes your way, give them your help and sympathy. They need it. Do not tell them that there is no room for a W. M. S., that you have too many other interests. Pause and think of the help it will be to your Circuit. It is not only a Missionary Society, it is an educative society. It has done more for our women and girls than anything that has ever come to us. During the coming year I trust our work will grow and widen so that when this year's record is written and the books are closed we shall be able to report 50 p.c. in membership as well as finance.

Mrs. R. Duff in presenting the report of the work of the W. M. S. for the year 1918-19, said we do so with deep thankfulness to our Heavenly Father, because of the wonderful results that the report shows. Our hearts were thrilled when at the Branch meetings held a few weeks ago at George Street Church, St. John's, the District Superintendents, Corresponding Secretaries and Treasurer of the Society told the story of a year—flowing with: painstaking, devoted service, and sacrificial giving. Last autumn the objective, set by the Board of Management was 20 p.c. increase in membership; 20 p.c. increase in funds. Our increase in membership shows 16 p.m. The auxiliary membership totals 1230—175 increase, or 16 p.c. Circles and Bands 5,000—

Increase 452, or 18 p.c. Grand total 4,236, increase 637, or 16 p.c. The Treasurer's report is very gratifying:—

Treasurer's Statement 1918-19.

Receipts.

Collections at Branch . . . \$59.45

Interest on Bank Account . . . 1.75

From Auxiliaries—Circles . . . 8344.64

and Bands . . . 8344.64

Disbursements.

Remitted Board Treasurer . . . \$135.53

Remitted Dist. Fund Treas. . . 122.22

Branch Expenses . . . 147.09

\$8404.84

Amount remitted Board

Treasurer, 1917-18 . . . 5405.20

Amount remitted Board

Treasurer . . . 8135.53

Increase—50 p.c. . . . \$2730.33

Amt. remitted Dist. Fund

Treasurer, 1917-18 . . . 82.50

Amt. remitted Dist. Fund,

Treasurer, 1918-19 . . . 122.22

Increase . . . . . \$39.72

Sources of Income 1918-19.

Annual members fees . . . \$1012.00

Life members fees . . . 250.00

Public meetings . . . 550.20

Misc. boxes and envelopes . . . 873.90

Donations . . . 103.90

Easter Offering . . . 973.02

Rest Fund . . . 113.55

Associate Helpers . . . 165.76

Little Light Bearers . . . 3.20

Other Sources . . . 1040.45

Circles and Bands . . . 3357.83

" " (Rest Fund) . . . 8.67

\$8457.81

Less Aux. Expenses . . . 62.47

\$8404.84

By this it can be seen that in New-

foundland we have many women of

vision. Here are a few comments on

individual societies from the Corres-

pondent Secretary's report. Cochrane

Street raises the most money. Brit-

annia went over 100 p.c. Twillingate

South has the largest individual giv-

ing. George Street the largest Easter

offering. Fortune the largest at-

tendance at its monthly meetings. Gower

Street the largest membership. Lower

Island Core the next. It is a

stormy sea that keeps Burin sisters

from a meeting. At Georges Brook

there are 21 intercessors—five of them

life members.

Two new auxiliaries have been or-

ganized—one at Garnish and one at

Freshwater, which bids fair to become

our star societies.

Where our work is meeting with

success it without doubt owes much to

the unselfish support given by the

pastors, who back up by word and

deed the efforts of our women. One

pastor speaking at a Branch meeting

from a 20 years experience, said "I

found that where there was a W. M. S.

he found women of vision, of strength,

or courage." Another said the in-

creases in the funds of the General

Board were due to the help of the W.

M. S. We crave the prayerful support

of our pastors, and especially those

on the circuits, for our Board. The

objective set for 1920 is 20—20—20,

meaning a 20 p.c. increase in mem-

bership, 20 p.c. in funds, and 20 new

missionaries.

Let me read to you an extract from

a letter sent to the Branch by our Pres-

ident, Mrs. Ross.

"To my mind there should go out

from this executive a ringing challenge

to the women of Methodism to enter

heartily into the great Forward

Movement contemplated by the Church

dial study of the Society, and there are

three facts that I wish to mention:

(1) That there is no opposition from

the General Board of Missions to the

work of the W. M. S. But that the

Society is doing its very best to co-

operate with the W. M. S. in its glori-

ous work. (2) The W. M. S. is an

educative force. This truth is estab-

lished by the fact that the General

Board of Missions gives 20 p.c. of its

increase to the W. M. S. (3) That if

we are going as a church and a con-

ference to measure up to our respon-

sibility in the five years drive to can-

vass the Methodist people of Canada

and Newfoundland for \$8,000,000.00,

we must seek the aid and hearty co-

operation of the W. M. S.

The motion was ably seconded by

Rev. Dr. James, who had the pleasure

of founding the first auxiliary of the

W. M. S. in St. John's.

Dr. Fenwick and Dr. Curtis spoke

very highly of the work of the So-

ciety.

The afternoon session of the con-

ference thus closed with the Benedic-

tion.

J. A. W.

(FRIDAY).

The usual session of the annual

Conference was held in the Church

at 9:30 a.m. Friday, June 27th, Dr.

Bond in the chair.

The meeting opened by Hymn 465,

and after reading of the Scripture by

Rev. H. Royle, prayer was offered

by the Rev. J. A. Wilson and Mr.

Noseworthy. Minutes of the previous

session were read and confirmed.

The Rev. Chas. A. Manning, B.A.,

Secretary of the General Missionary

Society was introduced to the Con-

ference by the Rev. Dr. Fenwick.

Then the Rev. W. DesBarres, B.A.,

D.D., of Sackville University, was in-

troduced to the Conference by the

Rev. H. Royle.

The Conference was delighted to

receive the Rev. Dr. Chown, General

Supt. of the Methodist Church of

Canada and Newfoundland. The

General Supt. in the course of a very

thrilling and soul-inspiring address

said that he was happy to be here. We

are Soldiers of the Cross, and co-

workers with God. When I crossed

the ocean as chaplain in the Olympic

early in the war, there were 6,000 sol-

diers on board. Some of them be-

longed to Nfld. I shall never forget

how in the midst of the grave sub-

marine dangers, they sang some of

the old familiar hymns, such as "I

fear no foe with Thee at hand to

bless." I have just come from the

B. C. Conference, staying only two

days at Toronto on my way here. Let

me say here that we are passing

through a grave crisis. In the west

there is being carried on what is called

a sympathy strike. I am sorry to

say that as a church we have been

drawn into it. One of our ministers

has left us and become a labor leader;

another has resigned from our

ministry owing to statements made

by him contrary to the Decalogue.

When the General Conference last

year passed the resolution advocating

co-operation instead of economic com-

petition, we thought that there would

be peace. Nevertheless we believe

that the time has come in the history

of the world when the principle of

the golden rule should regulate hu-

man relationships in every walk of

life.

Dr. Chown then spoke of Church

Union, which subject is being keenly

discussed throughout the whole Chris-

tian world. We are looking forward

to the day when all the Christian

churches shall be one. We rejoice in

the fact that some approaches from

the other Christian churches have

been made; yet while we are quite

prepared for Union and will endeavor

to hasten that day, yet we are not

prepared to throw away some of the

# Practical Gifts

FOR YOUR WEDDING PRESENT, Viz:—

PYREX CASSEROLES.  
PYREX PIE DISHES.  
CAKE STANDS.  
CAKE DISHES.  
SUGAR and CREAM DISHES.  
BOUQUET HOLDERS.  
CRUET STANDS.  
SUGAR DISHES.  
BUTTER DISHES.  
EGG STANDS.  
EGG and TOAST STANDS.  
PEPPER and SALT STANDS.  
PEPPER and SALT (Individual).

CREAM LADLES.  
GRAVY LADLES.  
COLD MEAT FORKS.  
SUGAR SPOONS.  
BUTTER KNIVES.  
PICKLE KNIVES.  
SALAD FORKS.  
OYSTER FORKS.  
BUTTER SPREADS.  
CHEESE KNIVES.  
PIE SERVERS, BERRY SPOONS  
and numerous other articles.

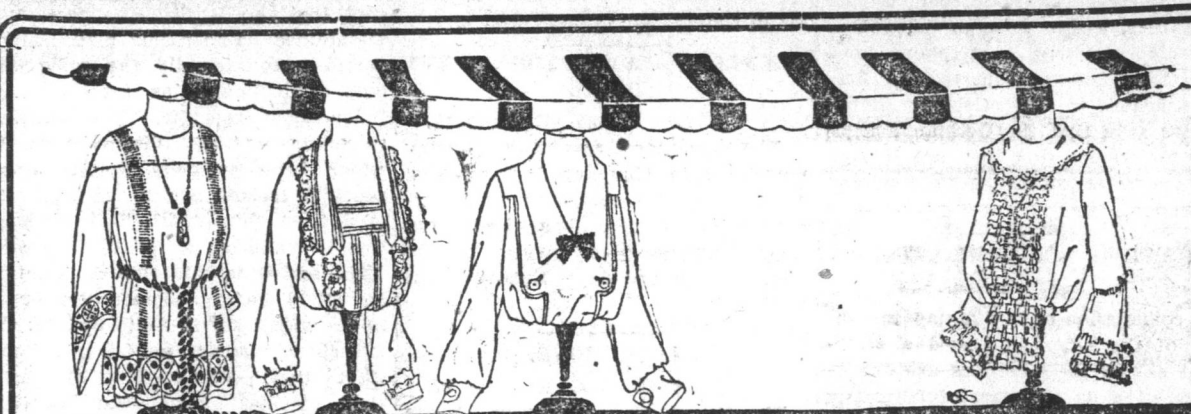
ONE QUALITY--THE BEST.

**AYRE & SONS, Limited**

PHONE 11.

HARDWARE DEPARTMENT.

PHONE 11.



## JUNE SALE OF BLOUSES

The price reductions make this a phenomenal selling of Blouses for, every wear, particularly as it includes our entire stock from the simply tailored waist to the most elaborately filled dressy Blouse.

### Lawn Blouses

Here are some exclusive styles in Launderable Blouses in models designed to be worn with smart skirts, ideally suited to business wear, or in fact for any occasion where a smart, neat Blouse is desired.

Special Reduced Prices,  
**98c, \$1.28 and \$1.68.**



### Crepe-de-Chene

and Georgette Crepe Blouses

The discriminating woman will be delighted with our displays of FASCINATING BLOUSES.

The most critical will approve the charming styles developed from beautiful Georgette Crepes, and Crepe-de-Chenes in the most desirable of the season's shades.

Reg. Price \$5.50. Now  
**\$4.75.**

### Cream Silk Blouses,

**\$2.50, \$3.00 to \$6.50.**



**MILLEY'S.**

## Opening Announcement.

MRS. PETER STEWART, opposite Seamen's Institute, Water Street East, has opened FIRST-CLASS TEA ROOMS on the second floor of her Restaurant and Bakery.

Light Lunches, Salads, Cold Meats, Homemade Bread and Fresh Butter, Meringues and Whipped Cream a specialty; Pies, Cake, Pastry, Cookies and all the Dainties that mother used to make.

Visitors to the city will find Stewart's Tea Rooms light and airy, well furnished, in fact a home away from home.

**STEWART'S RESTAURANT,**

Opposite Seamen's Institute.