

# BRITISH AMERICA Assurance Co.

Incorporated 1833

**FIRE AND MARINE**



HEAD OFFICE:

**British America Buildings, Cor. Front and  
Scott Streets, TORONTO.**

BOARD OF DIRECTORS:

HON. GEO. A. COX.	HON. S. C. WOOD.	S. F. MCKINNON, Esq.
J. J. KENNY, Esq.	JOHN HOSKIN, Q.C., LL.D.	THOS. LONG, Esq.
ROBT. JAFFRAY, Esq.	AUGUSTUS MYERS, Esq.	H. M. PELLATT, Esq.

CASH CAPITAL	\$ 750,000.00
TOTAL ASSETS, OVER	1,510,827.88
LOSSES PAID since Organization	16,693,159.11

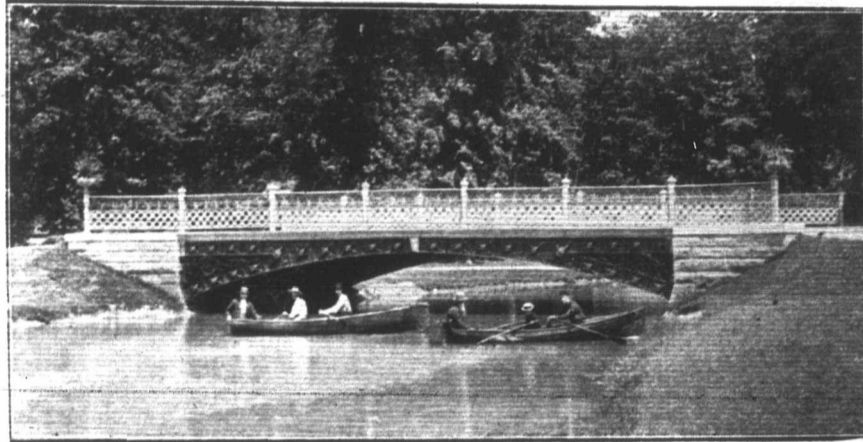
HON. GEO. A. COX, President

J. J. KENNY, Esq., Vice-President

P. H. SIMS, Secretary

# The Canadian Photo-Engraving Bureau

16 ADELAIDE STREET WEST,  
TORONTO



HALF-TONE FROM PHOTO.

**HALF-TONE                      ZINC ETCHING**  
**WOOD ENGRAVING**  
**DESIGNING                      DRAWING**  
**Interior and Landscape Photographing**  
**ELECTROTYPING**

Work Unexcelled. Prompt Attention. Prices Reasonable.  
Write for Samples and Estimates.

**MOORE & ALEXANDER**  
PROPRIETORS

# WESTERN CANADA

**LOAN AND SAVINGS  
COMPANY** Incorporated 1863

PAID-UP CAPITAL - - \$1,500,000.00  
RESERVE FUND - - - 770,000.00

Offices: No. 76 Church St.,  
TORONTO

DEPOSITS received and interest allowed thereon, com-  
pounded half-yearly.

DEBENTURES issued for TERMS of 2 to 5 YEARS,  
interest payable half-yearly. Trustees are legally empowered to  
invest in these securities.

DIRECTORS:

HON. GEO. W. ALLAN, President.	GEO. GOODERHAM, Vice-President.
THOMAS H. LEE.	GEO. W. LEWIS.
ALFRED GOODERHAM.	GEO. F. GALT.

WALTER S. LEE, Managing Director.

# W. BARBER & BROS.

**Paper Makers**

GEORGETOWN, ONT.  
Make a Specialty of

**Machine-Finished Book Papers**  
**Colored Specialties and**  
**High-Grade Weekly News**

JOHN R. BARBER, Proprietor.  
E. FINLAY, Superintendent.

**GEO. E. CHALLES, SELLING AGENT,**  
MAIL BUILDING, TORONTO.

The paper used in the "Canadian Churchman" is from  
the above Mills.