

e a blue skirt, and uniform, for the that she might be he Guide meeting. You know it is the

ren go on working ing that service to note of the blessed

ear that the Scout- rs of Indian Head, doing their good hey have helped to ompany there, and hem in their work is instructing them rinciples of the or- rol Leaders receive her worker who en- he various duties of

four good Patrols, Heron, the Whip- er and the Fox. great Sisterhood of e Iris Patrol would you.

me of those good how your committee the Province of a Provincial Com- rganization in this an progress without ization. Perhaps tmasters will take id as the good Scout and give the Guides

wonderful letter in n of December the 1 the aims and ob- ide Movement. It Guide Movement was 1 means to an end, ing the girls having ent and the interest ctivity during the ime. The country st that every citizen e training that we g to help them to fit what is now upon struction of the na- e of the most import- roblems of the day. stmas time, the chil- our thoughts go out Bethelchem, and we of Him that we must ut act, and do all we Welfare to help the etter and happier, to es to be good citizens, king, but of the King

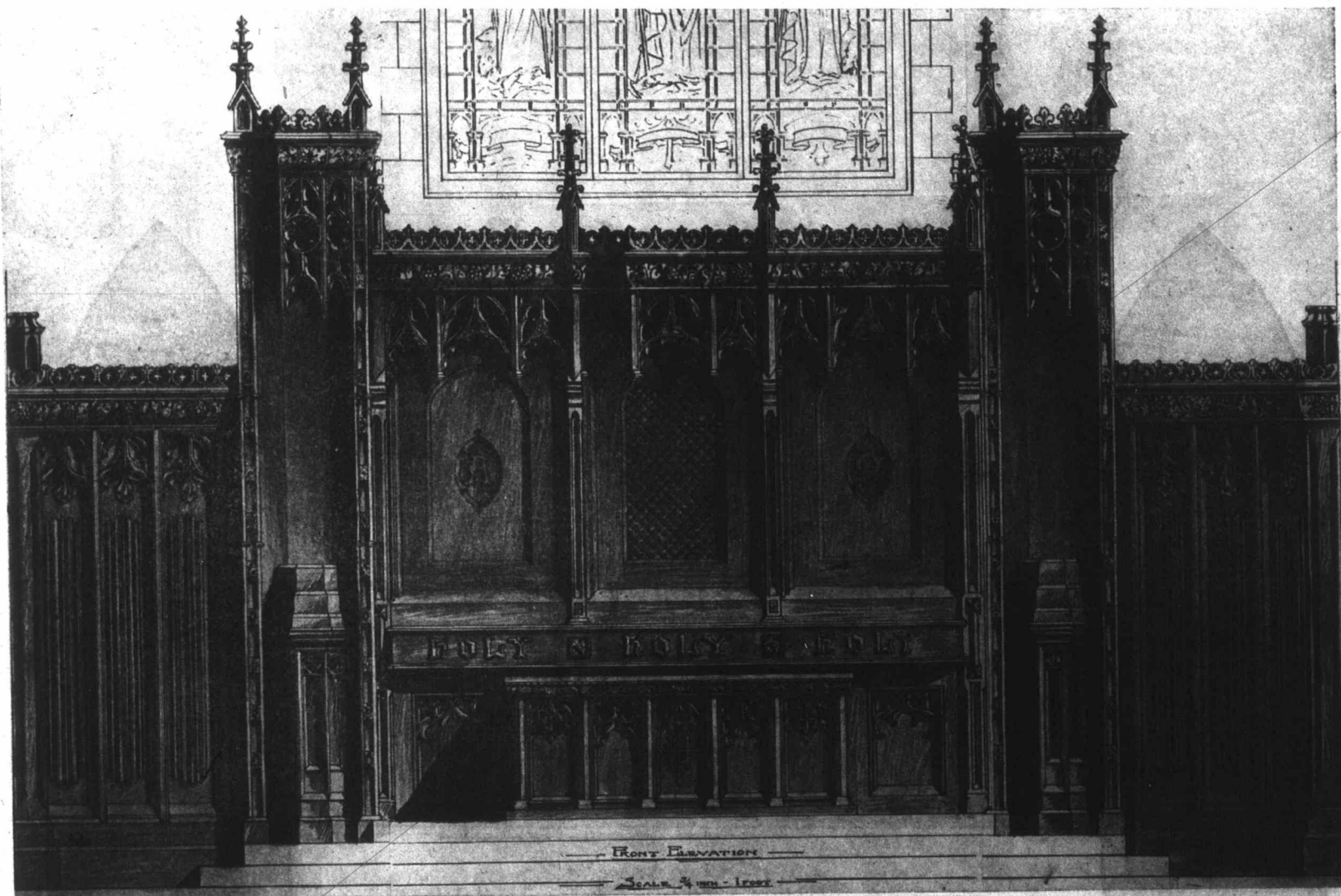
E CORNER.

de-Me-Ree. laughter and also in shortness and also in oval and also in round, winding and also in in sinner and also in crimson and also in in giddy and also in re doing each moment

ord Square. ind by the side of a de, flat space; tidy; atharine. he Mystery. where you never were ou never will be, that very place seen by me. zze Sentence.

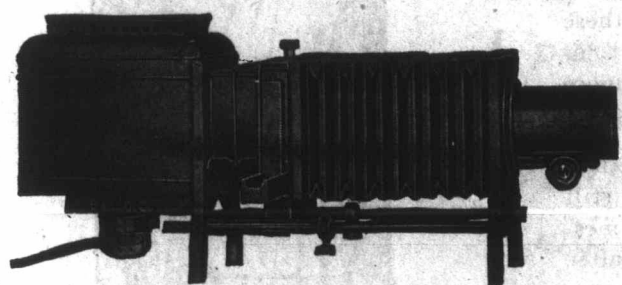
Look ok U Look Look & VXS or XX UR ii. xt Week.—C. A. B.

Church Furniture



The Valley City Seating Co. Ltd.

A Lantern Will Tell Your Story



Bausch & Lomb—Model B. Balopticon Mazda Lamp

- BM 12—Model B Balopticon, with 400-Watt 115-Volt Mazda Lamp, 2 5/16-inch diameter, 12-inch focus projection lens and carrying case \$60.00
- BG 12—Same as above, but with acetylene burner 58.00
- BM-6V-12—Same as above, but with 6-volt lamp for use with storage battery. Prestolite Storage Battery extra 57.00 33.00
- BCM 12—With 600-watt Mazda Lamp. Larger lamp house 72.50
- CLM 15—For large auditoriums. Has 1,000-watt, 115-volt Mazda Lamp. No carrying case. 85.00
- CM 12—Small lamp house, 400-watt lamp, with case 66.00

We carry the full line of BAUSCH and LOMB and VICTOR Lanterns. Also VICTOR SAFETY CINEMA. "Graystone Bird" Hymns and our own make. Also thousands of other slides and lectures. All lanterns subject to United States Exchange.

80% Through the Eye

It is claimed that 80% of all that the mind of man ever receives comes through the eye. This explains why education by visualization is the forceful, resultful way.

The Church in our day and generation is coming to take its educational obligations and opportunities more and more seriously, and it is being realized that one of the most effective methods of instruction is by the use of the Lantern and the Safety Cinema.

The Lantern and the Safety Cinema help the Church to render a full-rounded ministry, as, in addition to instruction, they supply a wholesome and cheer-giving entertainment.

It is surprising, too, what an immense aid the Lantern and the Safety Cinema are in increasing attendance and commanding attention and interest in the Church, Sunday School, Prayer Meeting and other gatherings.

Let us tell you about the Lanterns and the Safety Cinema we specialize in. It will not obligate you in any way.

SEND FOR FOLDERS

DONALD M. SOLANDT

Successor to R. DOUGLAS FRASER

Cor. Church and Gerrard Sts. . . . TORONTO

Let A Lantern Tell It