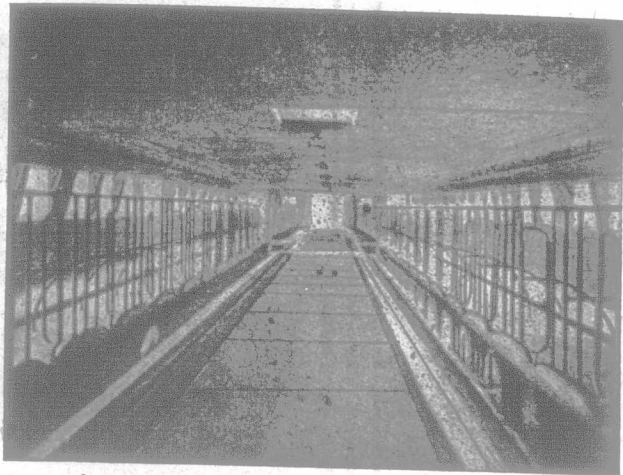
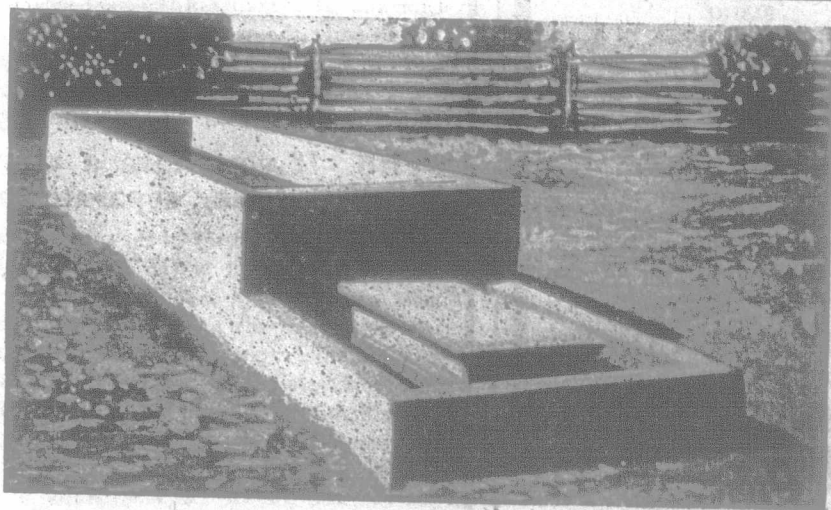


# USE MORE CEMENT AND MAKE MORE PROFIT

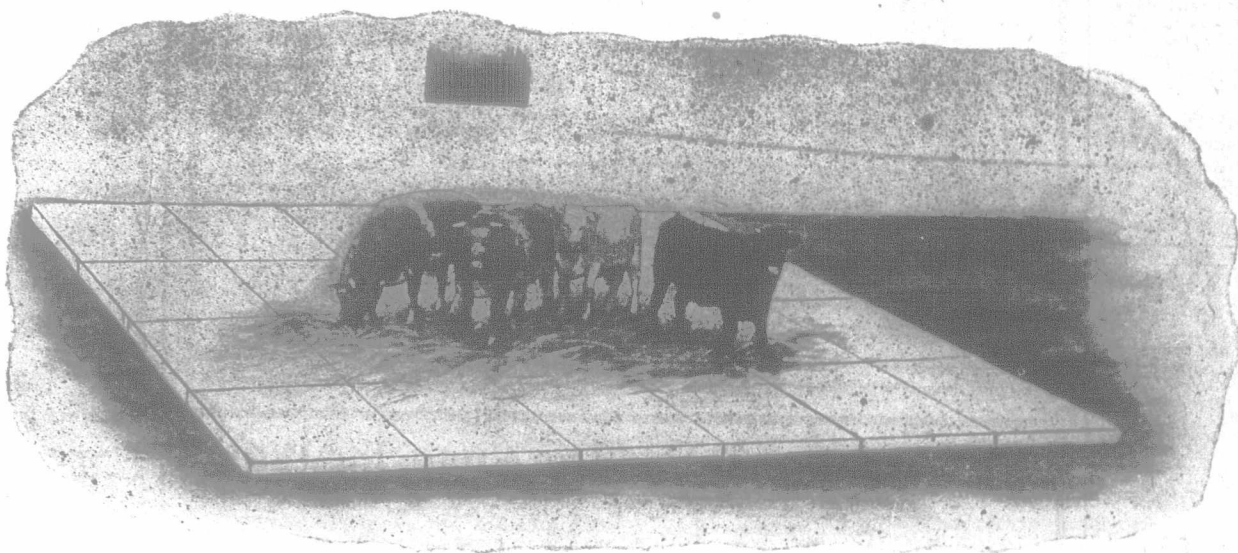
**T**HE illustrations shown are a few of the hundreds of uses for Portland Cement on the farm. Every farmer to-day that is not using cement for most of his building is losing money. Remember, all improvements in concrete are permanent. It is only the first cost, no expense for repairing, as there is with all other building material.



Cow Barn with running water in mangers, and central feeding passage, stalls and fixtures in gaspipe. Made of Portland Cement Concrete.



FIELD SPRING TROUGH—This shows a combination water trough in a pasture field for horses and cattle, and for sheep and pigs, taking the water from a spring or tank.



FEEDING FLOOR, 24x36 ft.—A feeding floor for sheep or cattle in the farmyard prevents loss and waste of hay, salt, grain, etc., and is easily cleaned. The illustration shows the general shape of a feeding floor which should be set an inch or two above the level of the farmyard, and also cast at a slight slope to allow water to run off.

**O**UR 128-page book, "PORTLAND CEMENT ON THE FARM," is worth hundreds of dollars to you. The regular price of this book is \$1.00, but you can obtain the same free in connection with our special offer, as follows: Send us \$1.00 for the Rogers' Book, and we will mail you with the book an order for \$1.00 worth of cement on the nearest Rogers' dealer. If there is no Rogers' dealer in your vicinity, send us 50c., and we will send you the book per return mail.

When making any improvements in concrete, be sure to buy

**ROGERS' PORTLAND CEMENT**

The man who knows cement will tell you that ROGERS' BRANDS are best.

**ALFRED ROGERS, LIMITED**

28 King Street W.

Toronto, Ontario