

GOOD, big "mealy" potatoes can not be produced without a liberal amount of POTASH in the fertilizer—not less than ten per cent. It must be in the form of Sulphate of POTASH of highest quality.

"Plant Food" and "Truck Farming" are two practical books which tell of the successful growing of potatoes and the other garden truck—sent free to those who write us for them.

Address, GERMAN KALI WORKS, 93 Nassau St., New York

"The Clothes Oft Proclaim the Man"

The colors of the paint with which the house is "clothed" will certainly proclaim the judgment and taste of the owner or painter of the domicile.

If one or two "COATS" of the CANADA PAINT COMPANY'S PAINT are applied, the house will be in a class by itself, viz.: the first class.

ASK YOUR DEALER TO SHOW YOU A CARD OF THE

Canada Paint Company's
Smart, Clear, Durable Shades.

That Old Fence

By using heavy upright wires, and Anchor clamps. These will support and strengthen the sagging plain or barb wire—and make a solid, invincible fence. Can be made close enough at the bottom to keep out the smallest fowl.

The Anchor clamp never slips. The self-acting ratchet for fastening the ends of the wire-strands relieves itself automatically, being equal to the hardest frost.

Why not fix up that unsightly, farm-damaging fence? It will cost little. Write for free catalogue.

Many ornamental styles and farm and garden gates, all ready to put up. Agents wanted everywhere.

ANCHOR FENCE CO., Stratford, Ont.

WITH OUR STOCK WATERING BASINS



You have a constant, pure and even-temperature supply of water for your cattle. They prevent disease contagion.

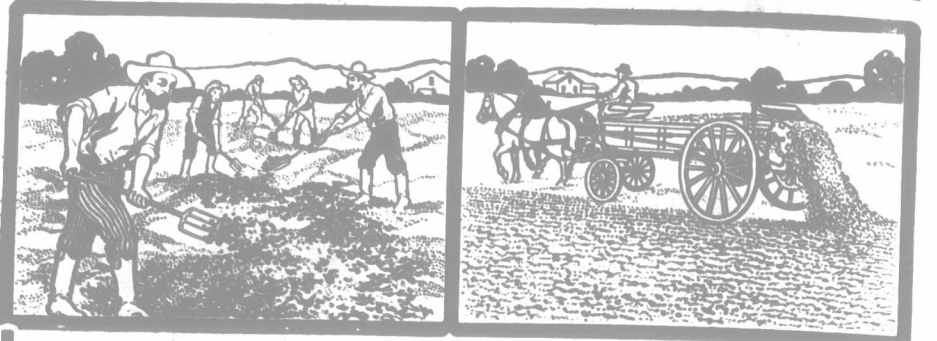
They are strong, durable and easy to install.

They are made of cast iron, and either coated or galvanized.

Write for prices to

C. RICHARDSON & CO., Box 500. ST. MARY'S, ONT.

"SUCCESS" MANURE SPREADER



DOES THE WORK OF FIVE MEN AND TWO TEAMS—AND BETTER

If you spread your manure with a "SUCCESS" you know that:

1. It will be spread uniformly.
2. That it will be thoroughly pulverized.
3. That the land will plow easily, because the plow will not be choked up with lumps.
4. That no manure will be wasted.
5. That it will be spread exactly in the proportion that you want.
6. That in the saving in labor it will more than pay for itself.
7. That your horses will not be abused and worn out by drawing a heavy, cumbersome machine.
8. That you are using the greatest manure spreader in the world.

Write for our free illustrated catalogue, "How to Increase Your Crops." It contains valuable information for every farmer. Manufactured by

THE PARIS PLOW COMPANY, LTD.
PARIS and WINNIPEG.

Eastern Agents: THE FROST & WOOD CO., LIMITED,
Montreal, Quebec, St. John, Truro.

THE BIG TRUTH STICK

SMASHES WORTHLESS SEPARATORS

EASY OR HARD WHICH FOR YOU

Put Facts and Common Sense to work on a Tubular Cream Separator and you know it must be easy to operate. Put Facts and Common Sense up against a back breaking, hard to wash, high can "bucket bowl" machine and you can't make yourself believe it is easy to operate. In the light of truth, the out-of-date, "bucket bowl" separators go to smash.

Which kind for you, the	Tubular	or	"Bucket Bowl"
	Low Can	or	High Can
	Simple Bowl	or	Bowl Full of Parts
	Enclosed Gears	or	Exposed Gears
	Self Oiling	or	Oil Yourself

Catalog O-193 tells all about Tubulars. Write for it.

The Sharples Separator Co.
Toronto, Can. WEST CHESTER, PA. Chicago.

EASY TO OIL

What One of Our Friends Says:

Midland, Aug. 2, 1905.

Georgian Bay Engineering Works,
Dear Sirs.—I would like to let you know that I am very much pleased with the 6-H.P. gasoline engine purchased of you last March. Indeed, I am proud of it for a good many reasons. Since it was set up in my shop I have given it a fair test, and I cannot speak of it too highly. It is very economical on gasoline, and the work it does for the amount of fuel used is a wonder. I believe the mechanical ignition is a never-failing device, and a feature that is sure to be appreciated by everyone who sees it, especially farmers and those who have been afraid to begin to name the many points where I believe it to be superior to all other engines. It runs my Cowan's No. 5 planer and matcher, one 20-inch swing lathe, one 30-inch band saw, one emery grinder and one saw table with 16-inch saw. I will be glad to have any one call at my shop, and I am sure that they will be thoroughly convinced that the engine is No. 1 in every respect. Wishing you every success, I am,
Yours truly,
JAS. A. BENSON.

Can We Not Interest You.

Georgian Bay Engineering Works
MIDLAND, ONT.