

## Shown At The Fall Fairs

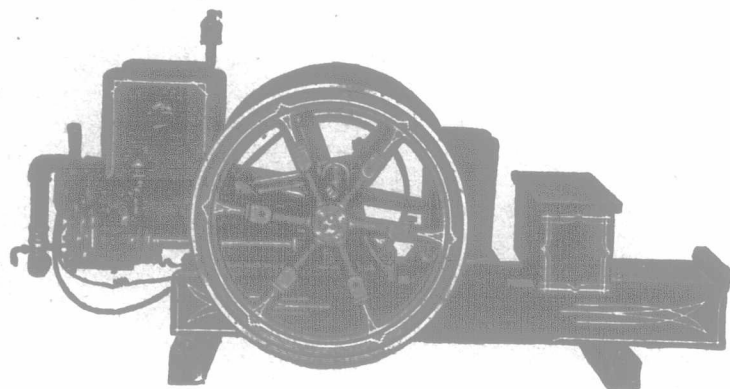
So, be sure and see this gasoline engine that starts without cranking, and has a fly-ball governor, and runs evenly and smoothly just like a high-grade steam engine.

It starts  
without  
cranking

# Renfrew Standard

It starts  
without  
cranking

This gasoline engine also has the most economical carburetor built. Repeated tests by farmers have shown that the Renfrew Standard engine consumes but half the quantity of gasoline required by many other makes to do the same work. We have the proofs in black and white to show you.



There are many other features about this engine you will want to see, so keep your eyes open for our exhibit at the following fairs:—Toronto, Aug. 29 to Sept. 14; London, Sept. 11 to 19; Ottawa, Sept. 11 to 19; Renfrew, Sept. 29 to Oct. 1; Charlottetown, Sept. 22 to 25; St. John, N. B., Sept. 5 to 12; Quebec, Aug. 31 to Sept. 5; Sherbrooke, Aug. 29 to Sept. 5.

The Renfrew Standard is made in all styles and sizes from 2½ h.p. to 60 h.p. Also see the Little Renfrew engine of 1½ h.p.

Another interesting exhibit will be our new 1915 Model Standard Cream Separator with interchangeable capacity feature and other advanced ideas. The Renfrew Truck Scale (Every Farmer Needs One) will also be exhibited.

Catalogues free. Write for them.

**The Renfrew Machinery Co., Limited.** Head Office and Works, **Renfrew, Ontario**

Agencies almost everywhere in Canada.

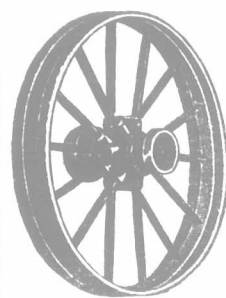
## FREE LAND for the settler in NEW ONTARIO

Millions of acres of virgin soil, obtainable free and at a nominal cost, are calling for cultivation.

Thousands of farmers have responded to the call of this fertile country, and are being made comfortable and rich. Here, right at the door of Old Ontario, a home awaits you.

For full information as to terms, regulations and settlers' rates, write to

**H. A. MACDONELL**  
Director of Colonization  
Parliament Bldg. TORONTO  
**HON. JAS. S. DUFF**  
Minister of Agriculture  
Parliament Bldg. TORONTO



**\$18**  
PER SET

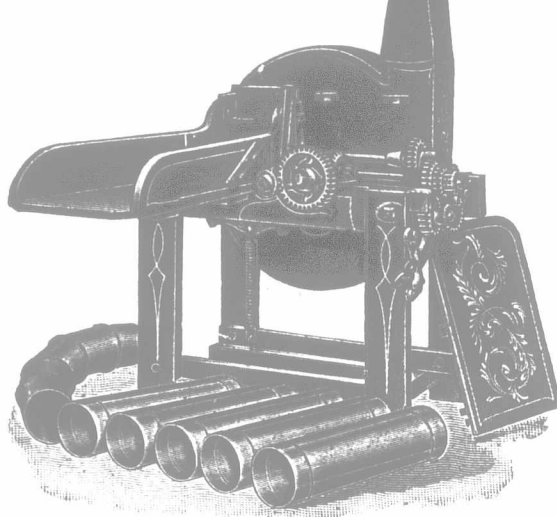
F.O.B. Toronto

28 inch and 32-inch diameter, 4 inch by ¾ inch axle. Built to fit any axle.

Write for  
Catalogue.

**ELECTRIC STEEL WHEELS**  
With Grooved Tires  
**NORMAN S. KNOX,**  
47 Wellington Street E., Toronto, Ontario  
Electric Wheel Co., Quincy, Ill.

## DICK'S No. 7 BLOWER CUTTER



This Shows Our 10-inch  
mouth,

## BLOWER CUTTING BOX

It is fitted with good, strong gearing with reverse lever attachment.

The fly-wheel is fitted with concave knives and enclosed in an all steel case.

We guarantee this Box to fill Silos 35 feet high, with a 6 H.P. Gasoline Engine.

Guaranteed against defects in workmanship or material.

Buy from us and save middleman's profit.

**DICK  
AGRICULTURAL  
WORKS**  
BOLTON :: ONTARIO

Costs less to  
keep in repair  
than any other  
elevator digger

## Digging Potatoes

with an

# IRON AGE



Saves time, saves labor, gets all of the potatoes, helps you get to an early market when the price is right. Digs, separates thoroughly, drops the potatoes where you want them, and in most cases fairly well sorted. The question is: Can you afford to be without a digger?

Four styles from which to choose the one that suits your conditions best. You pay for and your horses draw only what you need.

We have been making Diggers 10 years, and know what to build for this work. Our booklet "D" tells the whole story in an understandable way. May we send it?

**The Bateman-Wilkinson Co., Limited**  
410 Symington Ave., Toronto, Ont.

When writing advertisers please mention this paper.

# DOMINION EXHIBITION

VICTORIA, B. C.

Sept. 21 to 26

Horse Races  
and other attractions

LIVE STOCK  
AGRICULTURE  
HORTICULTURE  
MANUFACTURES  
ART

C. P. R. return fare at single rate from all points west of Port Arthur.

Take advantage of this and visit British Columbia's Capital City.

For information and Prize Lists, apply to

**GEORGE SANGSTER**  
P.O. Box 705 Secretary  
VICTORIA, B. C.

## GOES LIKE SIXTY SELLS LIKE SIXTY

### GILSON ENGINES

are made in all sizes for all purposes, priced from \$45.00 upwards. They have exclusive patented service features, not found in any other engine—fully described in our catalogue, sent free.

"Goes Like Sixty" Engines, are made for, and purchased by men of superior judgment and discrimination. They know that Gilson Engines are greater value because they have service features that cannot be secured elsewhere.

If you need an engine, and do not buy one, you are paying for it anyway. When you get a Gilson Engine, in reality you do not pay for it—it pays for itself.

Do not buy an engine until you have investigated further. Send for catalogue.

**Gilson Manufacturing Co., Ltd.**  
2909 York Street, Guelph, Ontario

## The Salvation Army Homes Wanted

A number of boys and girls are available for immediate placing, ages 5, 6, 7, 8, 9 and 10 years, also 10 to 15.

For full particulars apply to:

**LT. COLONEL TURNER**  
Immigration Secretary  
22 Albert Street, Toronto, Ont.

## Gilson Speed Governor



will save your cream separator from jars, shocks and the uneven speed of your engine. Starts separator slowly, runs any speed, and relieves separator of all vibration. Power can be cut off instantly. Send for catalogue. PRICE \$12.50.  
**Gilson Mfg. Co., Ltd., 2509 York St., Guelph, Ont.**