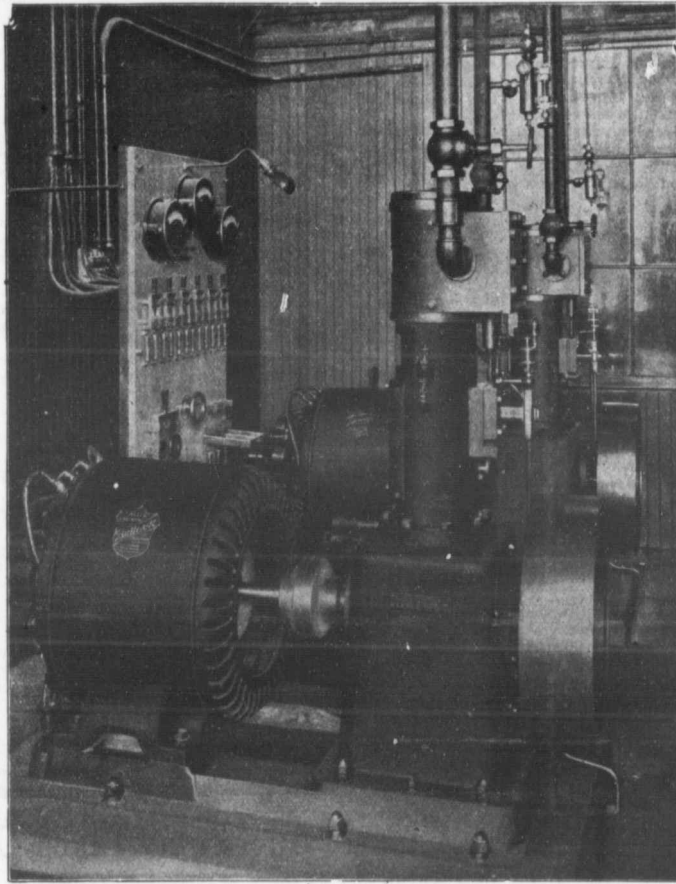


# Electric Light Plants



Two of our 12. K.W. Generators and Auxiliary Apparatus, forming the lighting plant of Dow's Brewery, Montreal. The base of each set is only 57 1/2 in. x 32 in.

"Allis" Mining, Saw Mill and Flour Mill Machinery, Engines, Pumps, Steam Turbines, Turbine Water Wheels.

"Bullock" Electric Apparatus.

"Ingersoll" Air Compressors, Coal Cutters and Rock Drills.

"Lidgerwood" Hoisting Engines

## ALLIS-CHALMERS-BULLOCK LIMITED

Head Office and Works : MONTREAL

District Offices :

MONTREAL : Sovereign Bank Bldg.  
 NEW GLASGOW : N.S. Telephone Bldg.  
 WINNIPEG : 251 Notre Dame Ave.

TORONTO : Traders Bank Bldg.  
 NELSON : Josephine St.  
 VANCOUVER : 416 Seymour St.

eat Co., destroyed. course of Que., for 20,000.— at Bell —Roller ty of the tally de- il, which was also it. Croix is \$7,000.

G IN TE. used in effect on inforce- question, "The h might in con- sulphur amount ble, but arily it percent- cinders. Norton lphur in eel if the ness and

alue in dollars. 17,327 22,204 259 137 39,927

rtar will a dense ore draw ur in or- fect the

RS. e CON- e great- scribers, sk their criber is itself a er and to earding struction in his

, through nforme- mpleted ominion, i of our arly ap- fficiency

our head r branch- or Van- attention d.