

Issued Each Week—Only One Dollar A Year

VOL. XXXII.

NUMBER 25

PLANTY and UNGS Score
age Commis. Dec-13

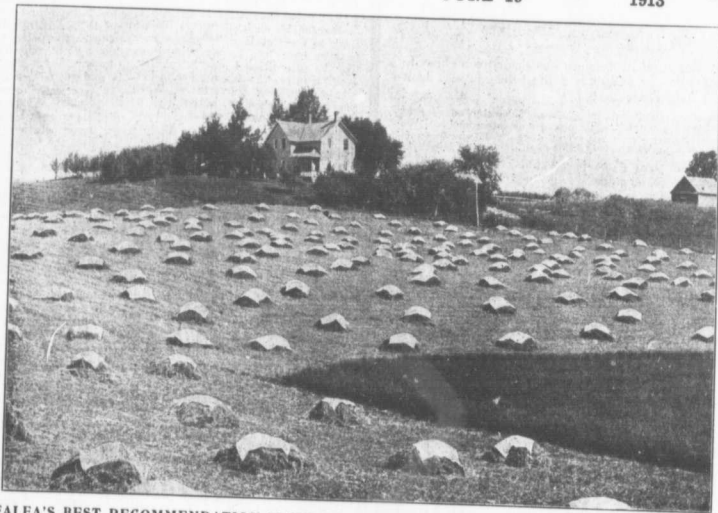
FARM AND DAIRY

RURAL HOME

PETERBORO, ONT.

JUNE 19

1913



ALFALFA'S BEST RECOMMENDATION IS ITS GROWING POPULARITY WITH PRACTICAL FARMERS. Thirty-three per cent. of the farmers of Ontario are now growing alfalfa. Alfalfa is being experimented with extensively in every other province of Canada. Our departments of agriculture and agricultural colleges receive more inquiries about alfalfa than about any other farm crop. And yet it is not many years since a few farmers only were experimenting with this plant and their results, due to the poor methods of cultivation followed, were often unsatisfactory. But you "can't keep a good thing down" and alfalfa is to-day classed with corn as a cheap and desirable roughage for farm animals. Scenes such as this are becoming common.

DEVOTED TO
BETTER FARMING AND
CANADIAN COUNTRY LIFE