

Geological boundary
clearly located

Geological boundary
located with a possible error
of 500-1000 feet

Geological boundary
position assumed

Horizontal strata

Dip and strike of strata
and flows

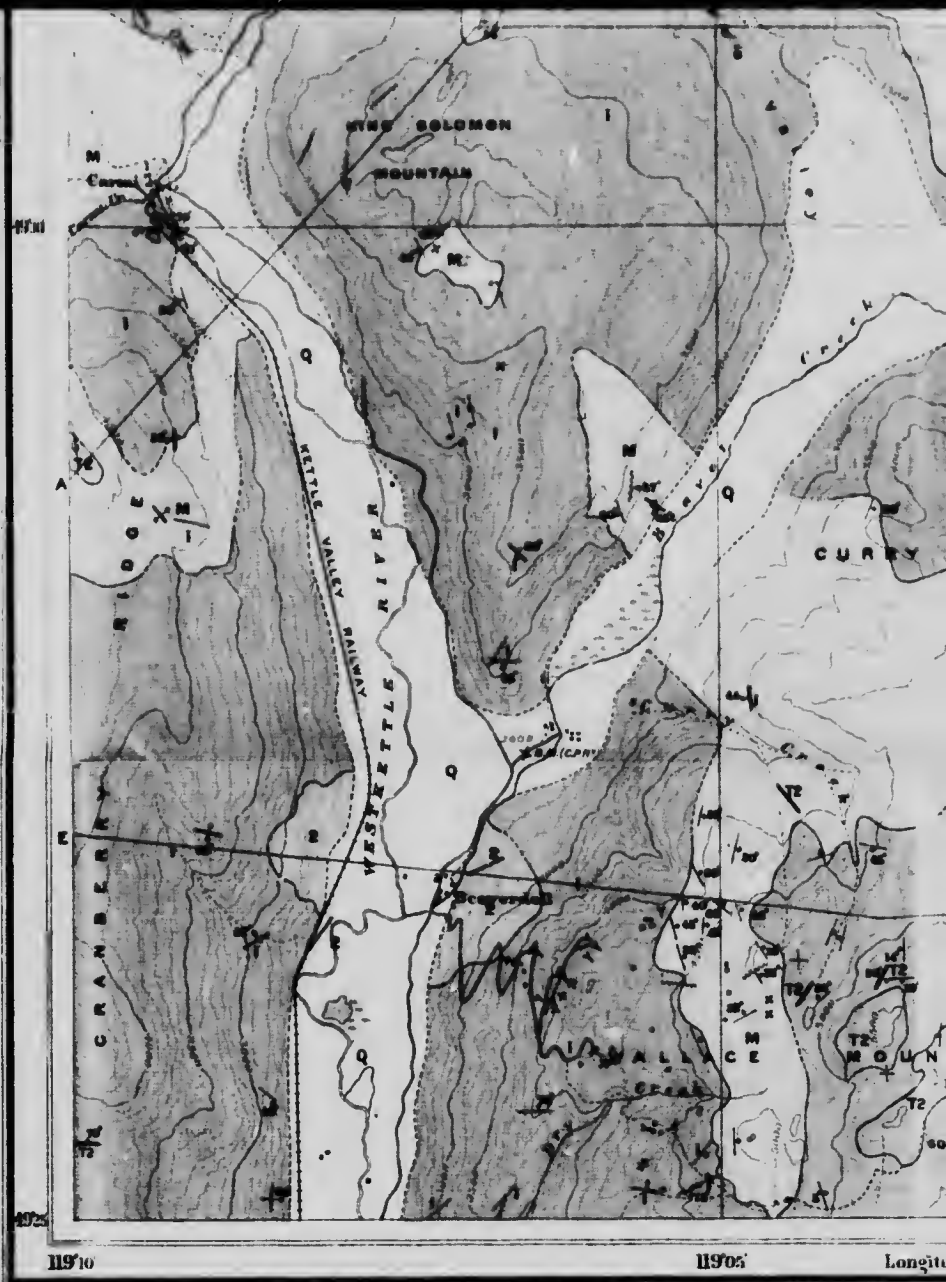
Dip and strike of dykes,
veins, and fractures

Dip and strike of planes
of foliation

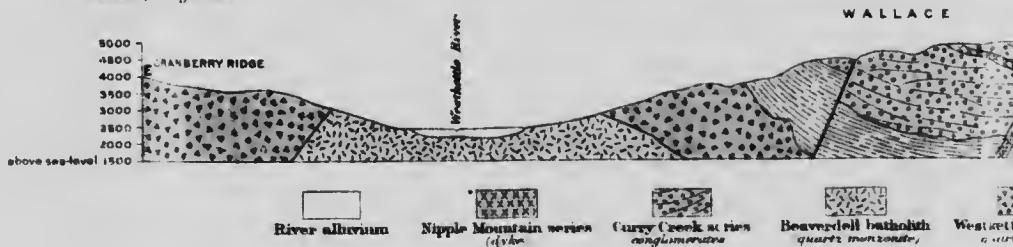
Veins

Fractures
(lines of brecciation; faults)

Glacial striae



C.O. Smedley, *Geographer and Chief Draughtsman.*
A. Jones, *Draughtsman.*



To accompany *Memoir* by I. Beinecke

BRITISH
YACHTING
BOARD



Note