

Fifth floor

Finally we are, as astronaut Wally Shirra recently put it, "high atop of everything."

The glassed-in room facing you is Meeting Room 424.

Meeting Room (424)

This room contains the standard meeting room furniture complement. It has a group capacity of 40. The unique sliding glass doors make it a very versatile area so that it can accommodate such functions as displays, overflow from shows in the Cultural Display Area, etc.

Leave this room and turn hard to your left, taking the passageway leading to the Seymour Street side of the Building. The first door you meet on your right leads to the Dal Radio Office Complex.

Dal Radio (420)

Entering the complex you will notice it is a series of rooms: a large studio, control room, small studio, work area, sound lock area and record storage. This department has complete and very fine facilities for closed circuit broadcasting of programs throughout much of the SUB and (hopefully) to areas of the Men's and Women's Residences. Staff members on duty will gladly show you the function and operation of various equipment.

Exit and continue through the doorway at the end of the hall. This takes you into the Student Counselling Service complex.

Student Counselling Service (422)

You now find yourself at one end of the hallway and Waiting Room area of this complex. Directly in front of you is the General Office and Main Reception Region.

The Student Counselling Service, under the direction of Dr. H. D. Beach, is there to provide counselling and aid at no charge to the students of Dalhousie University. Advice on personal problems, help with studying habits and vocational testing services are just a few of the many services offered here. Ask the receptionist for more details, or, better still, make an appointment to see one of the highly qualified counsellors.

Walk through the Waiting Room to the end (past various offices) and turn to your left. Continue on back to the center of the Building while noticing the various study and testing cubicles with such features as one way glass.

Go through the fire door and take either of the next two doors you see to your right. These open to Meeting Rooms 410 and 412.

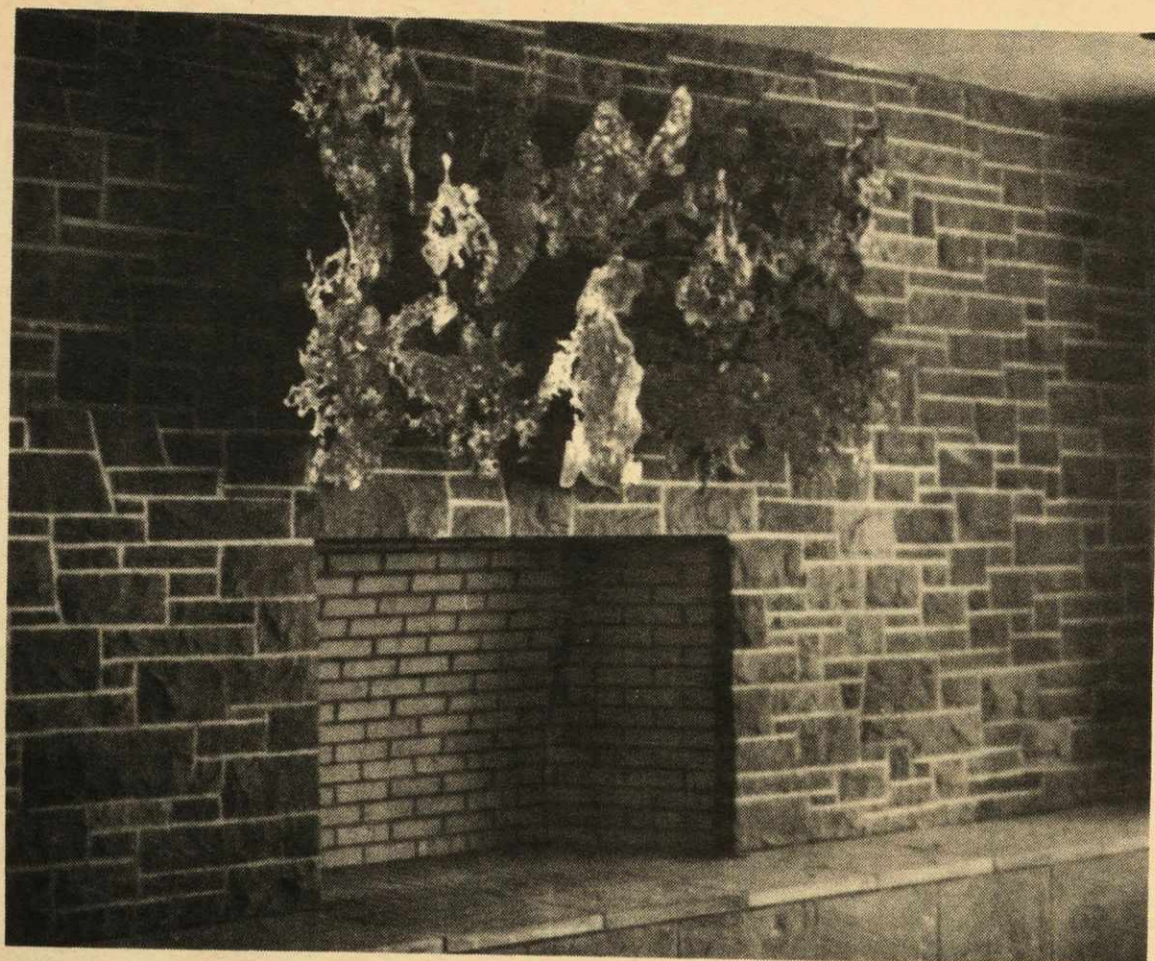
Meeting Rooms (410 & 412)

These adjacent rooms are separated by an accordion-type folding door, hence two 17 foot square rooms or one room 34 feet by 17 feet can be formed. Each room has the standard meeting room fixtures and seats about 28 persons.

Proceed past the fire doors and go through the entrance at the end of the hallway. This leads to the General Office of the Dalhousie University Branch of the Department of Canada Manpower.

Canada Manpower Center (418)

The Manpower Office, under the direction of Mr. M. V. Martel, offers complete guidance and services to students seeking summer work or employment after graduation. Interviews can be arranged here with the various recruiting agents of companies, corpor-



An elegant fireplace, gift of the class of 1927, is surmounted by a large collection of lichens gathered at Phoggy Cove by a Biology 100 class in 1911.

Ladies Lounge (314)

This "Powder Puff Retreat" is a fairly large lounge beautifully furnished and carpeted in a manner not duplicated anywhere else in the SUB. Facilities here include a small service kitchenette, five lockers, changing cubicles and washroom. Its myriad of uses can include small parties, showers, receptions and so on.

Leave this area and enter the first door on your left as you walk back to the center of the Building. This is the "Dalhousie Gazette" Office.

Gazette Office (312)

In complete contrast to their former cramped, dingy quarters, the new "Dal Gazette" headquarters are very spacious and offer excellent facilities. Very prominent is the large, horseshoe-shaped layout table and work rim. At the far end of the room note the writing cubicles for "hot off the typewriter" story writing. The other end shows the partially glassed-in Editor's Office.

Depart and continue back to lobby area. After passing through the fire door, the next door you see on your left is that of the Chaplain's Office.

Chaplain's Office (310)

Here we have the headquarters for the Chaplains that are affiliated with the Dal Student Union. They include representatives of the following faiths: Roman Catholic Church, Anglican Church, United Church, Lutheran Church, Baptist Church, Presbyterian Church and the Jewish Faith. The office is made up of a general reception area and a smaller, made up of a general reception area and a smaller, private discussion room. Hours that the Chaplains are in the office will be prominently displayed in the room or may be obtained from the Enquiry Desk in the Main Lobby.

Pass through the fire door facing you from the Seymour Street side of the Building and enter the Pharos Office, first door on your left.

Pharos Office (334)

The two smaller offices here are for the editor and the secretary. In the general work area is located 6 work desks and one large layout table.

Leave this room and enter doorway at the far end of the hallway. You will find yourself in one of a series of joined meeting rooms.

Meeting Rooms (328, 330, 332)

These three Meeting Rooms (each measuring 24 feet by 23 feet) can be combined to form one large room (72 feet by 23 feet) or two unequal sized rooms (one 48 feet by 23 feet, the other 24 feet by 23 feet). To give you a practical illustration of the size of the large room, it is expected 150 persons may be seated for one function. Individually, each Meeting Room can seat about 50. The standard meeting room conference tables and chairs will be available for each small meeting room.

Go out by the exit at the far end (the end away from University Avenue) and proceed down the hallway. The door immediately facing in the "enclave" leads to the Fourth Floor Servery. The first door on your right (down the hallway) opens to the passageway between the Men's Change Room and the Make-Up Room. The next door on the right is the equivalent passageway to the Ladies Change Room.

Change Rooms & Make-Up Room

The Change Rooms are primarily for use in theatrical productions but may be used on other occasions. Facilities in each Change Room include twelve lockers, a shower, wash basins and toilet cubicles.

The Make-Up Room is "Hollywood Style" with mirrors, vanities, etc. There is also direct access to the stage by a special stairway.

Go to the end of the hallway and turn to your left. The door you encounter here opens to the Projection Room.

Projection Room (326)

This booth has complete 16 mm. projection facilities. It shows movies on the electronically operated screen recessed in the ceiling of the far side of the McInnes Room (where the folding wall has partitioned off the "Cinema" here). Stage lighting and sound can also be controlled from here.

Walk out the fire doors, go straight past the elevators and turn left at the corner. Enter the fire door and proceed down the hall to the first door on your left. This is the Dalhousie Glee and Drama Society (DGDS) headquarters.

DGDS Offices (322)

The offices of Dal's Theatrical Society are well equipped to arrange the most entertaining productions yet seen on campus. This complex includes an office for the president of DGDS, working desks and chairs, a small corner lounge and a technical office. The technical work room will be shared with the Technical Department of the SUB Operations Staff.

Exit and go in the next door on your left and then proceed through the entrance way at the end of the hall. These lead to Meeting Rooms 318 and 316.

Meeting Rooms (318 & 316)

These adjacent rooms contain furniture that is standard for meeting rooms throughout the Building. The larger one has a seating capacity of 45, the smaller seats 35.

As you go back to the center of the SUB, go in the first door on your left. This is the Photography Department Complex.

Photography Department (320)

The room you have just entered is the Photography Department studio. Complete facilities will allow for such services as portrait photography and passport photos. Other rooms of the complex, which will likely not be open to public view, include the large Darkroom, Drying Room and Film Changing Room. All photographic work for the "Gazette" and "Pharos" will be handled by the office.

Continue back up the hallway. Note the last door on your left, this is the Unallocated Office Space.

Unallocated Office (324)

This room will be assigned to specific groups as the occasion arises. For example, it is presently occupied by those organizing the "Intro Dal Weekend" (March 7 & 8).

Continue out the fire doors and take the main stairs up to the Fifth Floor.



These elegant chairs are awfully uncomfortable, but were bought, perhaps, because they look terribly sexy.