



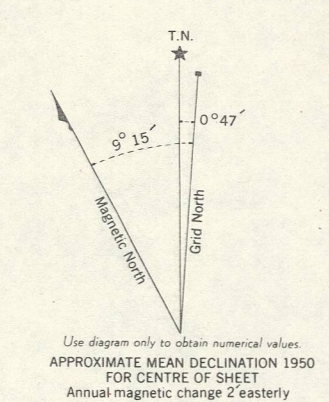
CANADA  
DEPARTMENT OF NATIONAL DEFENCE  
ARMY SURVEY ESTABLISHMENT

REFERENCE

- Roads:
  - hard surface, heavy duty 3 or more lanes Part completed
  - hard surface, heavy duty 2 lanes Route No.
  - hard surface, medium duty 3 or more lanes 12 lanes
  - hard surface, medium duty 2 or more lanes Not less than 14 ft. wide
  - loose surface, graded and drained 3 or more lanes Floor condition
- Other Roads:
  - Private Road
  - Trail
- Railway, double track
  - Station
  - single track
  - abandoned
  - narrow gauge or electric
- Bridge, underpass or overpass
- Boundaries, International
  - Provincial
  - County
  - Reservation, Indian
  - Military, Nat. or Prov. Parks, etc.
- Electric Power Line
  - Telephone, trunk route on Steel Towers on Wood Poles
- Triangulation Station
- Boundary or Survey Monument
  - Bench Mark 4.5 M 157.1
  - Spot Height, (in feet) -389
  - House, Barn
  - Buildings
  - Mill or Factory, small
  - School
  - Church
  - Post Office
  - Telephone Exchange
  - Mine or Open Cut
  - Cemetery or Churchyard
  - Quarry
  - Sand or Gravel Pit
  - Cliff
  - Cutting
  - Embankment, Dump, etc.
  - Lighthouse
  - Wharf or Pier
  - Foreshore Flats
  - Swamp or Marsh
  - Lake or Slough, non permanent
  - Glacier or Snowfield
  - Stream, intermittent
  - Contours, elevation
    - 175
    - 200
    - 225
    - 250
  - depression
  - Wooded Areas, heavy
  - light

INDEX TO ADJOINING SHEETS

45°00'	80°00'	79°00'
41 1/16	31 1/13	31 1/14
41 1/9	31 1/12	31 1/11
41 1/8	31 1/5	31 1/6
44°30'		



TO GIVE GRID REFERENCE ON THIS SHEET FIGURES, IGNORE THE SMALLER FIGURES PRINTED AROUND THE MARGIN OF THE MAP. THESE ARE FOR FINDING SHEET COORDINATES. USE ONLY THE LARGER FIGURES PRINTED IN THE MARGIN OR ON THE FACE OF THE MAP. VIZ: 5 90

POINT SCHOOL	
FOR STANDARD MILITARY GRID REFERENCE	
East	North
Take West edge of square in which point lies, and add the figure printed opposite this line on the East or West margin or on the face of the map. (Enter zero for East or West)	Take South edge of square in which point lies, and add the figure printed opposite this line on the East or West margin or on the face of the map. (Enter zero for North or South)
87	39
8	3
87 8	39 3
STANDARD MILITARY GRID REFERENCE 87 8393 (To nearest 100 Metres)	
Nearest similar grid reference: 100,000 Metres (Approximately 63 Miles)	

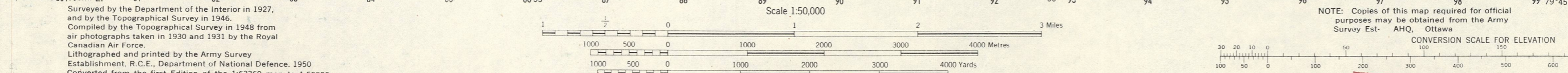
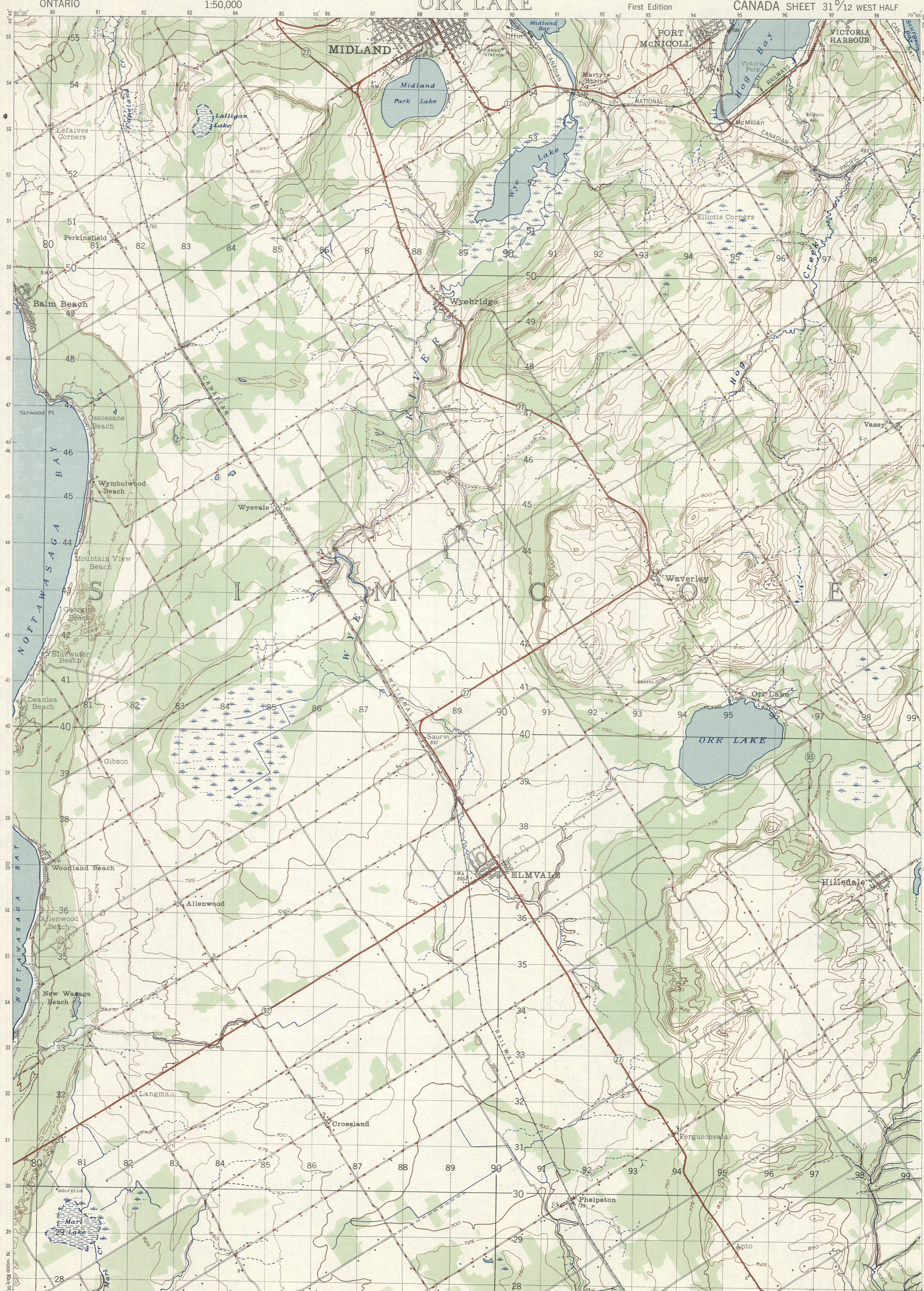
ONE THOUSAND METRE  
UNIVERSAL TRANSVERSE MERCATOR GRID  
ZONE 17

ORR LAKE  
31 1/2 WEST HALF  
FIRST EDITION

CONTOUR INTERVAL 25 FEET  
All Elevations in Feet above Mean Sea Level

NOTE: Copies of this map required for official purposes may be obtained from the Army Survey Est., AHO, Ottawa.

**SUPERSEDED EDITION**



Surveyed by the Department of the Interior in 1927, and by the Topographical Survey in 1946. Compiled by the Topographical Survey in 1948 from air photographs taken in 1930 and 1931 by the Royal Canadian Air Force. Lithographed and printed by the Army Survey Establishment, R.C.E., Department of National Defence, 1950. Converted from the first Edition of the 1:63360 map to 1:50,000 by the A.S.E., 1950.