

**MATINEES
WED & SAT
BEST SEATS
25c & 50c**

GRAND OPERA HOUSE

PRICES NEVER CHANGE

**MATINEES
WED & SAT
BEST SEATS
25c & 50c**

FIRST TIME HERE OF CHICAGO'S PET MUSIC PLAY

HONEYMOON TRAIL

IF YOU ARE TIRED, DISCOURAGED OR
"BLUE" THE BEST PRESCRIPTION
IS A VISIT TO THIS
BRIGHT AND WITTY
MUSICAL
SUCCESS



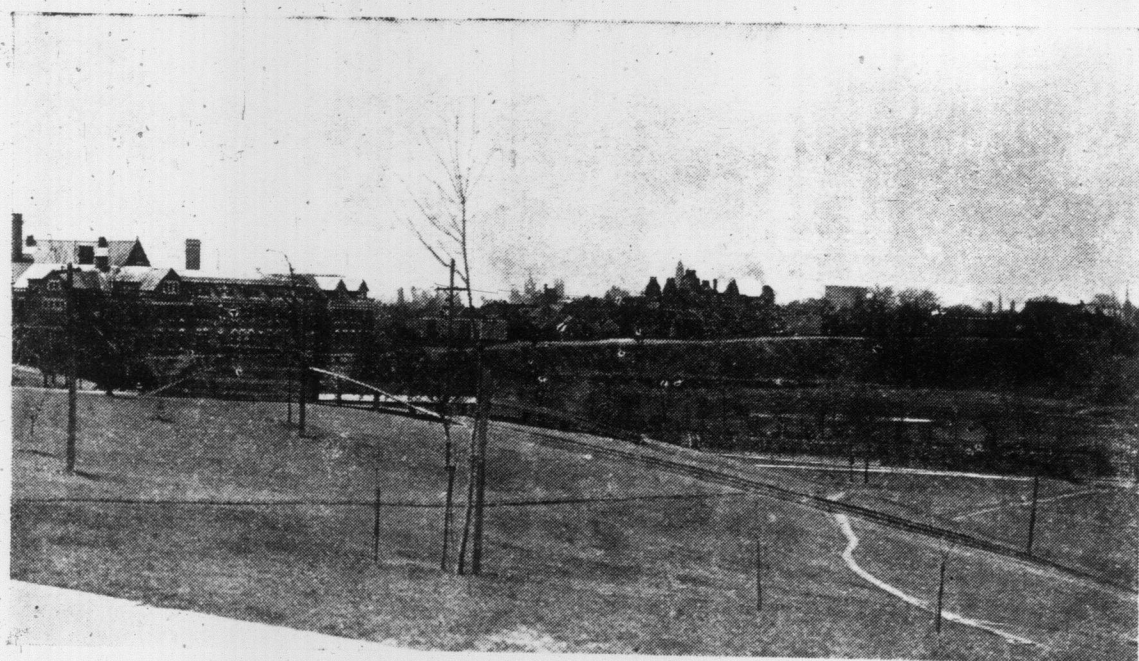
SONG HITS

WHEN I FEEL LIKE LOVING,
"YOU CAN'T BE A FRIEND TO
EVERYBODY," "ONE LITTLE BOY HAD
MONEY," "NOTHING TO DO BUT NOTHING,"
"HONEYMOON TRAIL," "I AM GOING TO STEAL
THE MOON," "I DON'T WANT A MILLION DOL-
LARS," "WHOSE LITTLE GIRLIE ARE YOU,"

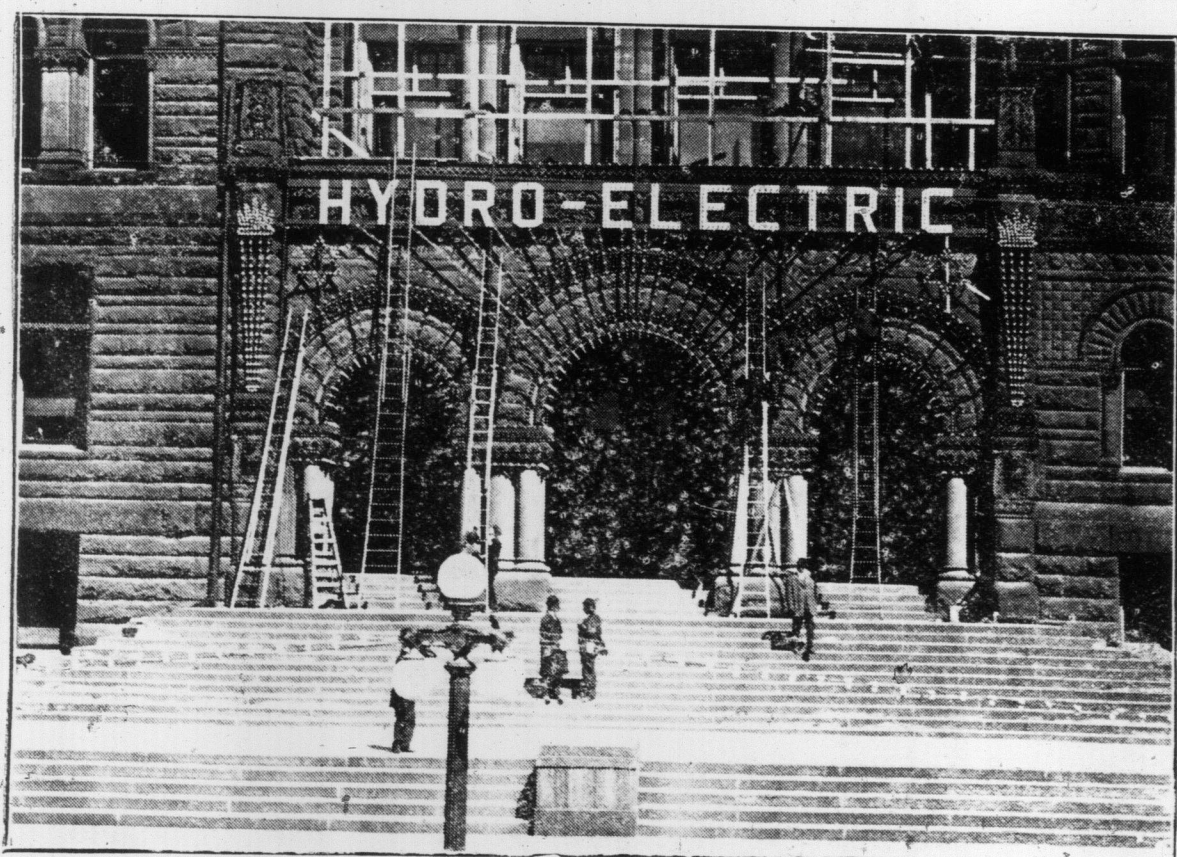
FRED
WYCKOFF
PERLE BARTI

50---COMPANY---50

NEXT WEEK — THE NEVER-TIRING LAUGHING COMEDY "THE BLUE MOUSE" WITH A NOTABLE CAST INCLUDING GRACE MERRITT



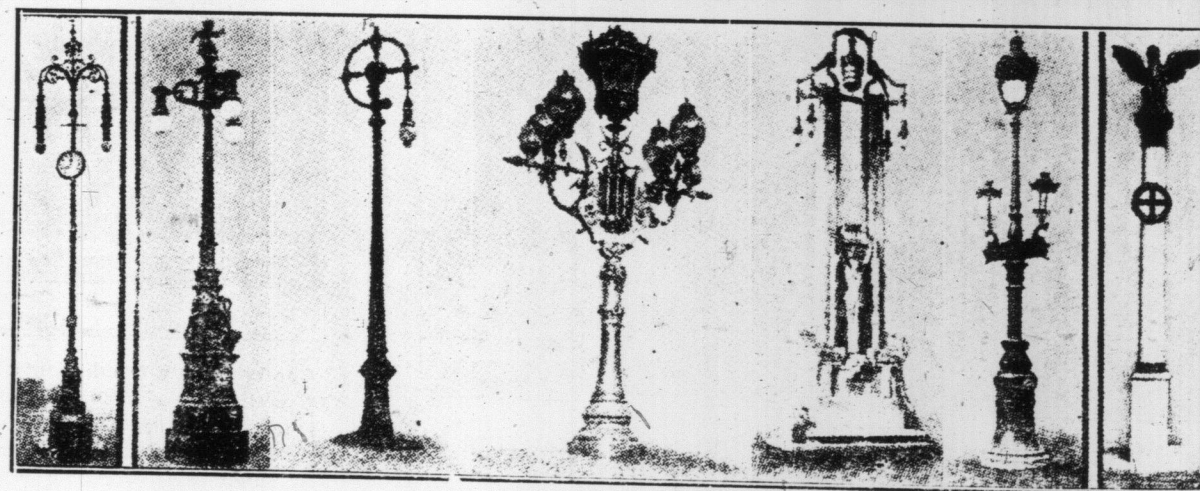
NEW WING OF THE ISOLATION HOSPITAL, RIVERDALE.



GETTING READY FOR THE OPENING—ON TUESDAY EVENING NEXT HYDRO POWER WILL BE OFFICIALLY TURNED ON IN TORONTO. THE FACADE OF THE CITY HALL WILL BE BRILLIANT WITH LIGHTS ON THAT OCCASION.

A GOOD "REPEATER."

Very few musical comedies are what is known as "repeaters." That is, they may play a city for one engagement to very good business, and may please, but, on coming back the next season their business drops off woefully. And still they have pleased on their first visit. Theatrical managers and producers find it difficult to account for this fact. "Honey Moon Trail," the big LaSalle Theatre (Chicago) musical comedy success, which is the attraction at the Grand this week, is a notable example of a good "repeater." Last season (its first road season after its long run at the La Salle) this attraction went to the Pacific coast over the Northern Pacific route, playing such cities as Winnipeg, Billings, Butte, Great Falls, Helena, Missoula, Walla, Spokane, Walla Walla, Tacoma, Seattle, Vancouver, Victoria, Portland, etc. This present season the attraction covered the same territory and in every city played did more business than it had done on its first visit. In Kansas City, Denver, New Orleans, Omaha, Minneapolis and St. Paul "Honey Moon Trail" this season beat last season's receipts by a goodly sum in each town. The answer must be that the play has, to use another theatrical technicality "draft"



INGENIOUS METHODS OF MAKING A LAMP-POST LESS UNSIGHTLY.

The first six pictures show different methods of dealing artistically with lamp-posts. From left to right they represent one of the clocks at the Marble Arch, London, an electric standard opposite the Palais de Justice in Rome, a lamp-post at the entrance to the Opera House, Paris, a lamp-post on the Oranien Bridge, Berlin, and a Parisian lamp-post. The last picture shows a temporary form of street decoration—one of the fibrous plaster pillars to be erected in Whitehall for the coronation, made by Boekbinder of Kentish Town.

—the most to be desired essential of a Morrison, Carl George and many other theatrical property. This season's casters of prominence. The famous La Salle Theatre chorus is a feature. The as Fred Wyckoff, Perle Barti, Frances scenic production is exceptionally elat-



SCENE FROM THE BIG MUSICAL COMEDY, "HONEYMOON TRAIL." THE ATTRACTION AT THE GRAND THIS WEEK.

I T
of
experi
pany.
score
tantals
have
joints
vegeta
sorts,
itself.
full o
stop.
must
A
notice
in Ede
clusive
went o
by his
It is a
carry
spring
for a
duced
ance o
ered s
anyone

By
tauran
building
the lo
everyt
degree
into th
do, ins
sible.
salad
thing
crimin
more
other
T
ant, by
sive, v
of Epi
ner of
with e
TH