

Toyland is in Furniture Building, corner of James and Albert Streets.

# EATON'S DAILY STORE NEWS

Store Opens at 8.30 a.m. and Closes at 5 p.m.

## Moderately Priced Furnishings That Add to the Completeness and Attractiveness of a Man's, Young Man's or Boy's Bedroom

### Towels to Initial for Gifts

With Christmas little more than a month away, it is not too early for those who intend to give such personal gifts as initialled towels to begin now. Here are splendid towels for initialling, representative of a large assortment.

**Hemstitched Linen Huckaback Towels**, with fancy damask borders and with space for initialling. Stripe or plain centres. Size 25 x 42 inches. Pair . . . . . 1.75

**Towels Already Initialed**—Hemmed White Bath Towels—Good assortment of initials, embroidered in fast color blue. Size 22 x 44 inches. Pair . . . . . .80

### Other Good Values in Linens and Cottons

**Irish Hemstitched Linen Tray Cloths**. Size 17 x 27 inches. Each . . . . . .40

**Dainty Damask Lunch Napkins**, rose, tulip or grape designs, with scalloped edges. Size 16 1/4 x 16 1/4 inches. Per dozen . . . . . 4.25

**EMBROIDERED BED SPREADS, PILLOW CASES, COMFORTERS, ETC.**

**Irish Embroidered Bed Spreads**, with drawn-work designs and hemstitched. Size 90 x 100 inches. Each . . . . . 5.25

**Irish Embroidered Linen Pillow Cases**, with hemstitched or scalloped ends. Size 45 x 36 inches. Per pair . . . . . 2.40

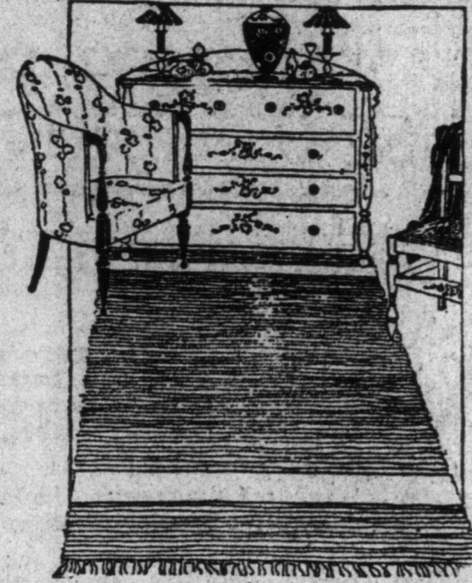
**American Comforters**, covered with silkoline, with plain colored borders, white cotton filling. Size 72 x 78 inches. Each . . . . . 3.75

**Canadian White Union Blankets**, pink or blue borders, and finished separately. Size 66 x 82 inches. Pair . . . . . 5.45

**Pillow Shams and Dresser Scarfs**, lace insertion and lace trimmed edges. Sizes 31 x 31 and 17 x 53 inches. Each . . . . . .50

### Bedroom Rugs, Richly Patterned and Strongly Made for Long Service

**SUCH RUGS** as Wiltons and Axminsters that have deep, close pile and beautiful combination colored designs are ideal for either bedroom or den. They are in soft, rich Persian designs and conventional patterns, in colors to harmonize with almost any decoration, and in sizes from the small hearth rug to large full sizes for big rooms. Small and medium designs in colors of green, red, tan, blue, olive and brown are included.



Hearth Rugs, size 27" x 54", are priced at 2.45, 3.75, 4.25 and 5.50.

Full room sizes are priced at:

6.9 x 9.0, 13.75, 18.50, 21.50 and 26.50.

9 x 9.0, 18.50, 25.00, 28.50 and 35.00.

9 x 12, 24.50, 33.50, 38.50 and 47.00 and upwards.

Also other sizes, larger or smaller, in various qualities.

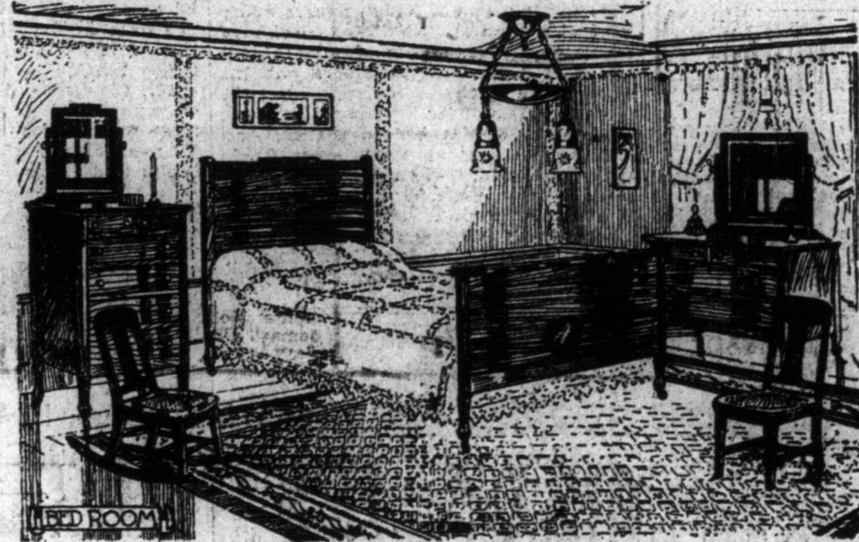
Closely woven Brussels Rugs are also very popular bedroom floor coverings. They are handsomely colored and noted for their serviceability. Sizes may be had in many qualities, one of which we recommend here because of its low price. 6.9 x 7.6, 14.50; 6.9 x 9, 17.50; 9 x 10.6, 27.00; 9 x 12, 31.00; 11.3 x 12, 38.50.

Scotch Wool Art Squares are also splendid for bedrooms. They are light, easily handled, easy to keep clean and give lasting wear. These we show are strongly woven and reinforced at edges so as not to curl up. In a host of pretty trelis and conventional designs of green, rose, blue, tan, grey or brown; also plain or small patterned centres, with chintz or figured borders. They are very low priced, as the following will show: Size 7.6 x 9.0, 9.50; size 7.6 x 10.6, 11.00; size 9 x 10.6, 13.50; size 9 x 12.0, 15.00. —Fourth Floor.

### Bedroom Furniture, Plain But Comfortable and Attractive

A MAN'S bedroom should not be filled up with unnecessary pieces of furniture, but should be delightfully restful, beautiful and spacious with well designed and simple pieces, that possess neatness and comfort.

Carefully selected as ideal bedroom furniture for the father, youth or boy, and as furniture most moderately priced, are the following items. Some of them may possibly suggest a suitable Christmas gift:



**Dresser**, post, colonial motif, made from quarter-cut oak, with fumed finish. Size 24 x 30 inches, shaped mirror, 42-inch double top, 3 small and 2 long deep drawers, fitted with wood knobs. Price . . . . . 21.00

**Chestonier to match**, with 7 drawers . . . . . 19.50

**Chestonier in white enamel finish**, has 12 x 18 inch bevel plate mirror, heavy double top, panelled ends, square corner posts and 5 long drawers with wood knobs. Lock and key included. Price . . . . . 12.25

**Iron Bed** in heavy white enamel finish is made in continuous post effect, with heavy centre fillers with ball ends. Size 3 ft. 3 in. x 4 ft. 4 in. Price . . . . . 5.50

**A Secretary Writing Desk** is a very useful piece of furniture for a man's bedroom. We recommend one with neat pediment back, 31 inches long, with large writing bed, convenient inside fittings, large drawer and lower shelf for books. Price . . . . . 7.75

**Bedstead**, made of oak, in fumed finish, has panelled head and foot end, heavy square corner posts. Sizes of 4 ft. 6 in., 4 ft. and 3 ft. 3 inches wide. Price . . . . . 7.75

**Dresser**, in white enamel finish, has 18 x 28 inch oval bevel plate mirror, 34 inch double top, panelled ends, square corner posts and 3 long drawers fitted with wood knobs. Price . . . . . 12.50

**A Globe Warrick sectional bookcase** is a splendid convenience to keep books where they are quickly obtainable and where they are free from exposure. One in fumed oak finish has 8 1/2-inch book section, 10 1/2-inch section, 12 1/2-inch section, top and sanitary base; 5 pieces in all. What an excellent Christmas gift. Price . . . . . 14.00

**A comfortable easy chair or rocker** is a bedroom essential. One made of fumed oak has panel top and slat back, full box frame seat, loose cushion covered leather seat and arms. Price . . . . . 6.50

—Fourth Floor.

### For the Man Who Shaves at Home

MANY MEN are their own barbers. They have their own special mirrors, safety razor, cup, soap and brush, talcum powder, etc., and can shave more economically, and at any time they please.

Here are the necessary accessories for home shaving; all are reliable, safe and very low priced:

**A nickel-plated Shaving Set** is very popular. It has adjustable bevelled mirror, size 5 3/4 inches, porcelain cup for shaving soap, shaving brush and talcum powder, all fitted in nickel-plated holders. Price, complete . . . . . 5.00

**Rubber Set Shaving Brushes** . . . . . 75

**Colgate's Shaving Soap or Cream** 25

**Eaton's Irish Violet Talcum Powder** . . . . . 26

**Florida Water, bottle** . . . . . 26

**Cream of Almonds and Witch Hazel, bottle** . . . . . 26



**Eaton's Shaving Lotion**, a healing and antiseptic preparation, for use after shaving. Bottle . . . . . 32

**The Ever-ready Safety Razor**, outfit consisting of 12 blades and handle for stropping. Price . . . . . 90

**The famous Gillette outfit**, containing safety razor, 12 blades, mirror, brush and soap. In pigskin leather case. Price . . . . . 9.00

**An Automatic Stropper** for either safety or straight blades. No fear of razor cutting strop, and no fear of getting the wrong edge on razor. A splendid gift for the young fellow just starting to shave. Price . . . . . 1.95

—Main Floor.

### A TIME-SAVER Call Main 3501

when you want to telephone for goods from several departments. An experienced shopper will make your purchases for you almost as well as you could do in person.

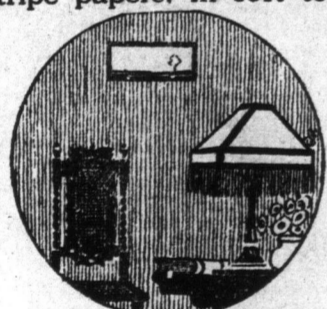
**IF YOU LIVE OUT OF TOWN** and wish to purchase any of the merchandise described on this page, write to the Shopping Service, and your order will be carried out carefully and promptly by one of the special shoppers.

### Pleasing Wall Coverings

THESE are merely suggestions from a very large collection of papers suitable as a background for a young man's room.

**Jaspe stripe, small leaf patterns, chambray and wide stripe papers**, in soft tones of buff, bisque, grey, green or medium blue shadings. When used in conjunction with floral or conventional band borders, are very appropriate for the young man's room. Single roll . . . . . 25

Many band borders, in shades appropriate for any side wall, are used mainly with the straight-



line effect. Yard . . . . . 5, 7, 10

Other good suggestions for two-tone Tapestry Papers, in leaf or floral effect, in shades of medium green, grey or buff. Single roll, 35, 40, 50.

### Enamels, Polishes and Floor Wax

**Varnish Stain**, light and dark oak. Quart tins . . . . . 33

**Clear Flowing Varnish**, for floors, woodwork, furniture, etc. Quart tins. 39

**Household Floor Wax**. Pound tins. 23

**Jet Black, Odorless Stovepipe Enamel**, with flat brush for applying. Pint can and brush . . . . . 25

**Gold Enamel** for frames, moulding, etc. Box . . . . . 30

**Ready Mixed Paints**, for interior or exterior use. Quart cans . . . . . 49

**Oval Paint Brushes**. . . . . 39

**2 1/2-inch Flat Wall Brushes** . . . . . 25

**Special Floor Polishing Outfit**, containing brush, turpentine, wax and cloth. Price . . . . . 1.39

**Linoleum English Floor Wax** and cloth for applying . . . . . 50

—Fourth Floor.

### Breakfast 25c.

Tuesday's Breakfast Menu, served in Grill from 8.30 to 11, consists of: Broiled Lamb Chops and Bacon, Fried Potatoes, Toast or Hot Biscuits, Orange Marmalade, Pot of Tea or Coffee. Price 25c. —Fifth Floor.

### Exceptional Variety and Value in Men's Fur and Fur-Lined Coats, \$21.75 to \$200.00

NOTWITHSTANDING the alarming increase in the price of furs we are able to just about keep pace with previous years' prices in men's fur and fur-lined coats, as instanced by the following items.

Every garment carries the Eaton guarantee of good workmanship and good service.

**Men's Black Beavercloth Coats**, as illustrated, with lining of Canamuskkrat and collar of Persian Lamb or Otter, in notch or shawl style. Sizes 38 to 48. Price . . . . . 45.00 to 95.00

**Men's Black Muskrat-lined Coats**, with extra fine quality Beavercloth shell, and shawl collar of Otter. Sizes 40 to 42. Price . . . . . 125.00

**Men's Mink-lined Coats**, with Otter collar in shawl style and extra fine quality Beavercloth shell. Sizes 40 and 42. Price . . . . . 135.00

Or a Mink-lined model, with Otter trimming on the sleeves. Price . . . . . 165.00

**Men's Canadian Raccoon Skin Coats**, richly furred, beautifully matched, have shawl collar, quilted sateen lining, leather armshields, and knitted storm cuffs in the sleeves. Sizes 40 to 46. Price . . . . . 185.00

Similar quality Canadian Raccoon Skin Coats, with the skins "dropped" to full length, giving a rich stripe effect. Sizes 42 to 46. Price . . . . . 200.00

Other Raccoon Skin Coats are well furred and durably made, have quilted lining, shawl collar, leather armshields, and knitted storm cuffs. Price . . . . . 135.00

The illustrated Raccoon Skin Coat has quilted sateen lining, storm cuffs, strongly sewn seams, and is well furred. Price . . . . . 95.00

**Black Dogskin Coats**, No. 1 grade fur. Price . . . . . 29.00

**Black Dogskin Coats**, No. 2 grade fur. Price . . . . . 21.75

**Korean Beaver Coats** (sheared goat). Price . . . . . 27.50

**Wombat Coat** (an extra durable Australian fur). Price . . . . . 43.50



T. EATON CO LIMITED