



Fig. 34.

Selandria rose produces a slug which feeds voraciously at night upon the upper surface of the leaves of roses. It lives about a fortnight and is of a dull yellowish colour, and not slimy. A cell is constructed in the ground and the slug does not pupate until the following spring, there being only one brood. The small blackish flies emerge from the ground when the roses are in leaf, and deposit their eggs in slits sawed in the margin of the leaves.

The grape-grower is sometimes much annoyed by the larvæ of *Selandria vitis*, which is a blackish fly having the thorax red above, and the legs below the knees whitish. The worms, when full-grown, are half an inch long, and are yellowish with transverse rows of black spots. Feeding side by side in rows of from five to twenty, they speedily devour a leaf and seek

Another very injurious and abundant species is *Selandria rubi*, the larvæ of which destroy the foliage of both wild and cultivated raspberries. They are not slimy like those of the foregoing species, but bear whorls of white spines in rows upon the back and sides. (See figure 34.) The leaves are pierced with small holes by the young worms, and as these increase in size the holes become larger and more conspicuous. The period of growth and manner of transformation are as in the preceding species, but there appears to be only one brood, the flies not appearing until the following spring. The larvæ appeared to be unusually abundant last season. The flies, an example of which is shown in figure 35, magnified, have a black head and thorax, and reddish or yellowish abdomen and legs.



Fig. 35.

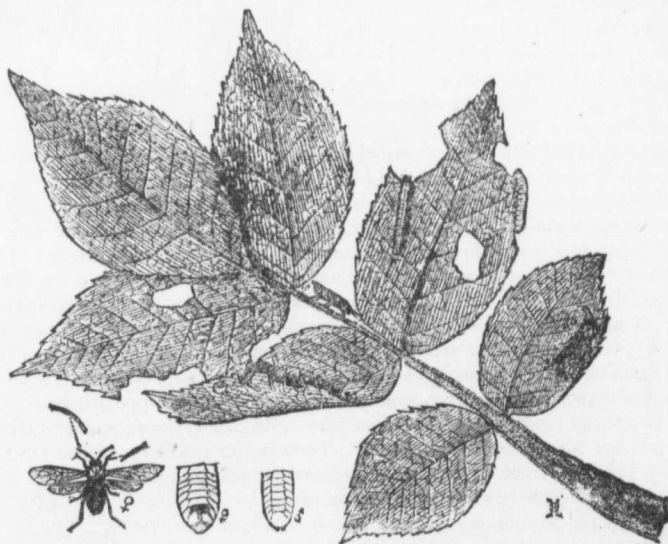


Fig. 36.

a new one. Cells are formed in the earth by the mature larvæ, and the flies from the first brood issue about the first of August; those of the second not until the following spring.

Selandria
the exception
It has been re
that its habi
this insect in
or three days
they become c
have only cap
other parts of

The larva
hickory, are r
they secrete, a

Macrophy
foregoing, but
niger, as the n
is another black

The genus
shorter and thi
flowers of Spir
liberal marking

The last,
than thirty Can
leucostoma of K
half an inch lo
T. atrovioletacea
aceous or cloudy
large handsome
tunately ignora
appear to be ab

The membe
which usually ha
or long, simple, s
Lophyrus and *L.*

Lophyrus al
transparent wing
the females being
broadly pectinate
the sexes differ,
worms, when you
green as the leav
therefore, difficul
side. The flies a
August, and there
feeding together o
same day upon the
days later, from w

Lophyrus Ab
of which are often
the foliage, to the

* Mr. Henry Osbo
Ent. Vol. xvi., p. 148.